



TREE KANGAROO CONSERVATION PROGRAM



ANNUAL REPORT 2015





WOODLAND
PARK ZOO

TREE KANGAROO CONSERVATION PROGRAM



ANNUAL REPORT 2015



www.treekangaroo.org

*Tree Kangaroo Conservation Program
Annual Report 2015
Seattle, Washington, USA • 2016*

Contents

2

Tree Kangaroo Conservation Program History

3

About Us

5

Local YUS Coservation Priority Species

6

Tree Kangaroo Conservation Program Team Members

9

Remembrance of Berau Giebac

11

Five-year Grants from GEF and the Rainforest Trust

12

Highlighting TKCP Strategic Partnerships

15

Five Strategies for Achieving TKCP's Mission

16

STRATEGY ONE:
Managing the YUS Conservation Area

20

STRATEGY TWO:
Applying Our Research

22

STRATEGY THREE:
Planning for a Sustainable Future

26

STRATEGY FOUR:
Supporting the Communities

36

STRATEGY FIVE:
Operating TKCP

44

Support

48

Thanks

50

Maps



Front cover: Tree kangaroo in the wild. Photo by Tim Laman.

Back cover: Welcoming Sing-sing in Singarokai village. Photo by Lisa Dabek, TKCP.

Title page: Forest in YUS Conservation Area. Photo by Lisa Dabek, TKCP

Left, top: Mambawe Manaono on a YUS walking trail. Photo by Mikal Nolan, TKCP.

Left, bottom: Children in the water along the coast at Singarokai village. Photo by Mikal Nolan, TKCP.



History

Building a Model for Community-based Conservation

The Tree Kangaroo Conservation Program (TKCP) is the Woodland Park Zoo's flagship international conservation program, focused on conserving the endangered Matschie's tree kangaroo (*Dendrolagus matschiei*) and the habitat in which it lives. From its beginnings in 1996 to determine the status of the Matschie's tree kangaroo in the wild, TKCP has evolved into a holistic program supporting habitat protection for a wide range of threatened species, as well as initiatives to enhance local community livelihoods and access to government services. TKCP is now the umbrella name for the partnership between WPZ's TKCP and TKCP-PNG, the locally-registered nongovernmental organization in Papua New Guinea (see page 4 for more information).

Over the course of two decades, the program has grown from its mountainous roots to embrace a broad landscape encompassing marine and coastal reef ecosystems, lowland and montane rain forests, alpine grasslands, and the agricultural areas and settlements belonging to more than 50 villages within the Yopno, Uruwa, and Som (YUS) watershed areas on the Huon Peninsula.

Together with the local landowners in YUS, PNG government, Conservation International, Lifeweb Initiative, and many other supporters, TKCP helped to establish the country's first nationally-protected Conservation Area in 2009. The 187,000-acre YUS

Conservation Area is the first and only protected area of its type in PNG—providing protection at the landscape scale, wholly owned by local people, and with the support of the PNG government for long-term protection.

Under PNG's customary land tenure system in which local people own and control over 90% of the land, long-term habitat protection relies on the commitment and participation of the local communities who depend on the forest's products and services. Together with local landowners and communities, TKCP partners with the PNG government, conservation biologists, social scientists, universities, research institutions, and other NGOs to build local capacity for the sustainable management of the YUS Conservation Area (YUS CA) and the surrounding landscape. Through these partnerships, local residents build a strong connection between their commitment to conservation in YUS with better opportunities for their families and communities.

With two decades of effort and experience, TKCP continues to shape the concept of conservation for the country, setting a benchmark to which other national protected areas can aspire.

1996

TKCP begins its work in YUS
First land pledged for conservation
by YUS Landowner Mambawe
Mamaono

2002

TKCP receives the
AZA International
Conservation Award

2004

First YUS Teacher's
Scholarship students
graduate and return to
teach in YUS communities

2009

The YUS Conservation
Area is formally gazetted by
PNG's national government,
protecting 187,000 acres of
wildlife habitat

The local landowner
association is officially
incorporated as the YUS
Conservation Organization

YUS communities host a
large celebration of the
YUS CA gazettal

2008–2013



Wild tree kangaroo in YUS. Photo by Bruce Beehler.
Plants of YUS. Photos by Lisa Dabek, TKCP.



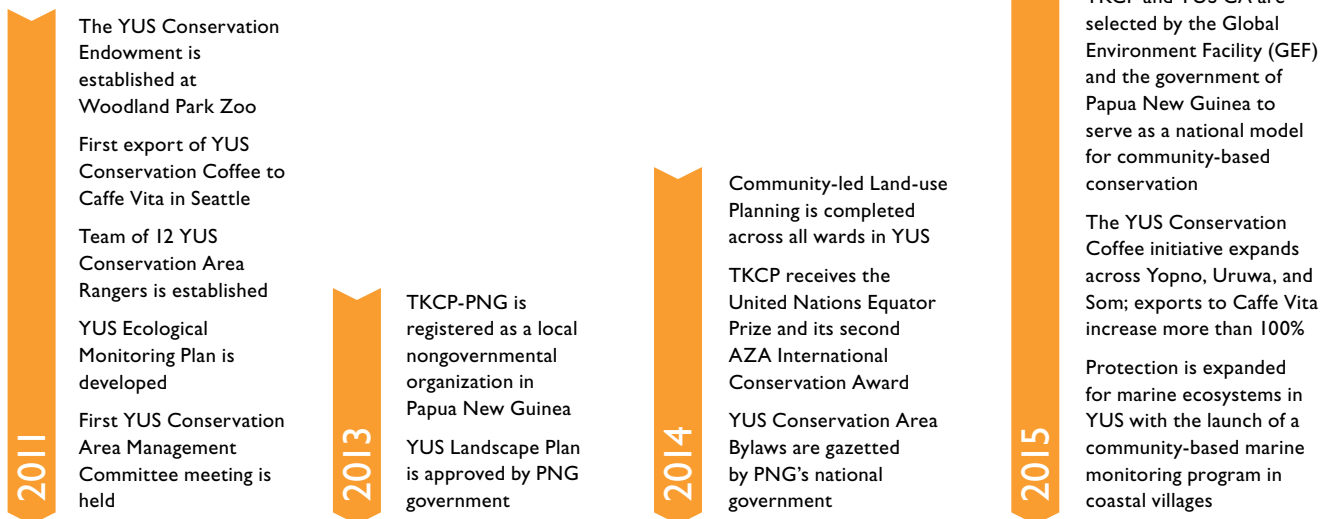
About Us

Vision

The Tree Kangaroo Conservation Program envisions a sustainable, healthy, and resilient Huon Peninsula landscape which supports the area's unique biodiversity, human communities, and culture.

Mission

The Tree Kangaroo Conservation Program fosters wildlife and habitat conservation and supports local community livelihoods in Papua New Guinea through global partnerships, land protection, and scientific research.



TKCP's efforts are amplified with the support of large grants from Conservation International and the Lifeweb Initiative of the German Federal Ministry of Environment (BMU) and German Development Bank (KfW)

Who We Are

Three Organizations, One Common Vision

The **Tree Kangaroo Conservation Program (TKCP)** is the umbrella name for the partnership between Woodland Park Zoo's TKCP and TKCP-PNG.



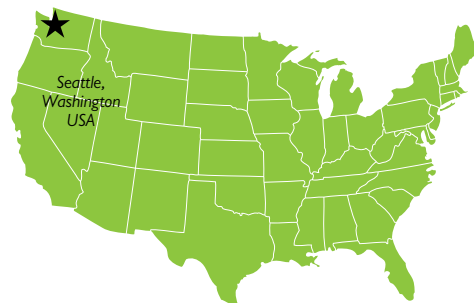
TREE KANGAROO CONSERVATION PROGRAM – PAPUA NEW GUINEA (TKCP-PNG)

An independent non-governmental organization registered in PNG. TKCP-PNG is the implementing partner of TKCP. Based in Lae, PNG.



WOODLAND PARK ZOO'S TREE KANGAROO CONSERVATION PROGRAM (TKCP)

Woodland Park Zoo's TKCP serves as a model for the “living landscape” approach to conservation among the zoo's Partners for Wildlife field conservation program. Based in Seattle, Washington, USA.



YUS CONSERVATION ORGANIZATION (YUS CO)

To ensure local ownership and continued community support of our work, TKCP partners with the community-based YUS Conservation Organization which represents the interests of local landowners and their communities. Based in YUS, PNG.



TKCP is the designated field program for the Association of Zoos & Aquariums Tree Kangaroo Species Survival Plan (AZA TK-SSP). Species Survival Plan programs focus on animals in danger of going extinct in the wild, using captive breeding as one approach to help the species survive and to link AZA institutions to field conservation work.



TKCP is supported by zoological institutions throughout the globe which are working together for the conservation of tree kangaroos. Through the World Association of Zoos and Aquariums (WAZA) and its affiliate zoological associations, the international tree kangaroo partnership network promotes greater integration and a more holistic approach to protecting tree kangaroo species.

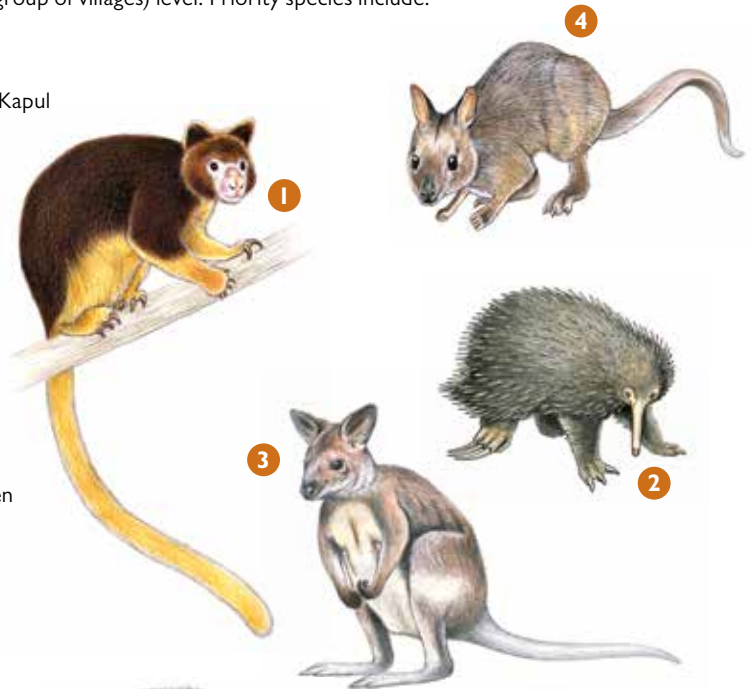
Local YUS Conservation Priority Species

Through TKCP's Land-use Planning process (see Strategy Three, page 22), communities identified priority species for the focus of local conservation efforts. Species are selected based on their cultural and dietary importance to the community, their local conservation status, and their role in maintaining the health of the ecosystem in YUS.

Conservation Priority Species are defined at the ward (group of villages) level. Priority species include:

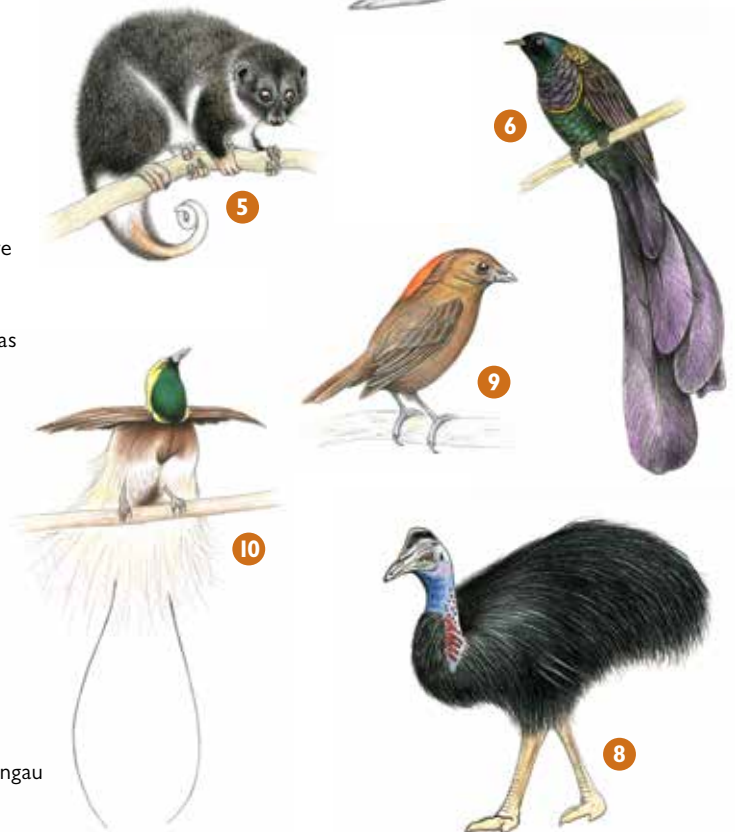
MAMMAL SPECIES

1. **Matschie's or Huon Tree Kangaroo** – Redpela Kapul
(*Dendrolagus matschiei*)
IUCN Status: Endangered
2. **Eastern Long-beaked Echidna** – Nilnil Kapul Bilong Graun
(*Zaglossus bartoni*)
IUCN Status: Critically Endangered
3. **New Guinea Pademelon** – Bikpela Sikau
(*Thylogale browni*)
IUCN Status: Vulnerable
4. **Forest Wallaby** – Liklik Sikau
(*Dorcopsulus vanheurni*)
IUCN Status: Near Threatened
5. **Mountain Cuscus** – Blekpela Kapul Bilong Maunten
(*Phalanger sericeus*)
IUCN Status: Least Concern



AVIAN SPECIES

6. **Huon Astrapia Bird of Paradise** – Blakpela Kumul Longpela Tel (*Astrapia rothschildi*)
IUCN Status: Least Concern
7. **Orange-footed Scrub Fowl** – Redpela lek welpaul (*Megapodius reinwardt*)
IUCN Status: Least Concern
8. **Dwarf Cassowary** – Muruk
(*Casuarius bennetti*)
IUCN Status: Near Threatened
9. **Macgregor's Bowerbird** – Yellow kangal pisin save bilasim ples singing (*Amblyornis macgregoriae*)
IUCN Status: Least Concern
10. **Emperor Bird of Paradise** – Kumul Waitpela Gras (*Paradisaea guilielmi*)
IUCN Status: Near Threatened



MARINE SPECIES

11. **Dugong** – Dugong
(*Dugong dugon*)
IUCN Status: Vulnerable
12. **Leatherback Turtle** – Bikpela Trosel
(*Dermochelys coriacea*)
IUCN Status: Vulnerable
13. **Green Turtle** – Likilik Trosel
(*Chelonia mydas*)
IUCN Status: Endangered
14. **Hawksbill Turtle** – Liklik Trosel Maus Olsem Tarangau
(*Eretmochelys imbricata*)
IUCN Status: Critically Endangered

Tree Kangaroo Conservation Program

Papua New Guinea



Ms. Mikal Nolan

Program Manager

Expertise: Project management, organizational development, gender



Mr. Karau Kuna

Conservation Strategies Manager

Expertise: Geographic information systems, information technology, land-use planning



Mr. Benjamin Sipa

Community Services and Livelihoods Manager

Expertise: Agricultural value chains, community development



Mr. Danny Samandingke

Leadership Training and Outreach Senior Coordinator

Expertise: Education, leadership training, youth programs



Mr. Daniel Solomon Okena

Research and Monitoring Coordinator

Expertise: Biological research, mammal surveying, plant phenology, long beaked echidna biology



Ms. Melanie Palili

Healthy Community Coordinator

Expertise: Community development, health education

Seattle, Washington, USA



Dr. Lisa Dabek

Program Director

Expertise: Leadership, tree kangaroo and marsupial biology, partnerships, fundraising



Mr. Trevor Holbrook

Program Coordinator

Expertise: Program management, strategic planning, organizational development

Team Members



Ms. Laris Bartsaka

Administrative Coordinator

Expertise: Office management, accounting, Quickbooks software



Mr. Namo Yaoro

Conservation Officer

Expertise: Leadership, conservation outreach, community mobilization



Mr. Dono Ogate

Conservation Officer

Expertise: Leadership, coffee production, conservation outreach



Mr. Steven Fononge

Conservation Officer

Expertise: Leadership, conservation outreach, community engagement



Mr. Chris Max

Conservation Officer

Expertise: Leadership, cocoa production, coastal resources



Mr. Victor Eki

Mapping Officer

Expertise: Landowner engagement, dispute resolution, Global Positioning Systems (GPS)



Mr. Matthew Tombe

Mapping Officer

Expertise: Landowner engagement, dispute resolution, Global Positioning Systems (GPS)

TKCP wishes to recognize the contributions of TKCP Pioneer and Advisor **Mambawe Manaono**, one of our first partners in YUS.



YUS Conservation Area Rangers

Mr. Soya Werawe	Kumbul/Keweng village
Mr. Nelson Teut	Gua/Teptep village
Mr. Tamina Findeng	Mek/Nolum village
Mr. James Jio	Towet village
Mr. Moses Nasing	Yawan village
Mr. Geno Yuwoc	Worin village
Mr. Robson Soseng	Gomdan/Sapmanga village
Mr. Tingke Sapenu	Gogiok village
Mr. Danny Wande	Kalaset village
Mr. Mike Barup	Ronji/Koripon village
Mr. Dogem Mirande	Bonkiman/Wadabong village
Mr. Sulu Mondo	Bonea village
Mr. Hesia Manok	Singorokai village

Nominated by the landowners of YUS to conduct monthly patrols through steep, treacherous terrain and challenging weather conditions, the YUS Conservation Rangers represent the commitment of local communities to protect their environment. TKCP is proud to support Papua New Guinea's first conservation rangers in patrolling and monitoring, educating communities on the rules and boundaries of the YUS Conservation Area (CA), and upholding the YUS CA bylaws in collaboration with landowners and local magistrates. The YUS Conservation Rangers continue to build upon their traditional ecological knowledge by developing their skills in species identification, tracking and research methods.

The YUS Conservation Rangers represent the commitment of local communities to protect their environment.



Front left: Manrex Yausi, Dogem Mirande, Nelson Teut, Tamina Findeng, Robson Soseng, Tingke Sapenu, Sulu Mondo, Mike Barup, Hesia Manok, and James Jio. Not pictured: Soya Werawe, Moses Nasing, Geno Yuwoc and Dannu Wande. Photo by TKCP.



A Remembrance of Berau Giebac



Mr. Berau Giebac, a landowner from Worin village in YUS, worked with the Tree Kangaroo Conservation Program for more than 10 years. He assisted with the tree kangaroo tracking research at Wasaunon Field Camp and was one of the most friendly, welcoming, helpful team members. He had a beautiful singing voice and wrote a song about Wasaunon. Berau was a valued member of the YUS Conservation Coffee initiative and worked closely with our team. He sadly passed away in July 2015 at too young of an age. We want to express our condolences to his family and share our sadness at this tragic loss.

I will always remember his smile and his kindness. We miss him greatly.

Lisa Dabek and TKCP team



Photo by Erika Travis.
Photo by TKCP.



Common Acronyms

AZA – Association of Zoos & Aquariums (USA)

AZA TK-SSP – Association of Zoos & Aquariums Tree Kangaroo Species Survival Plan

CA – Conservation Area

CAMC – Conservation Area Management Committee

CBO – Community-based Organization

CEPA – Conservation and Environment Protection Authority (formerly the Department of Environment and Conservation)

GEF – Global Environment Facility

IUCN – International Union for the Conservation of Nature

LLG – Local Level Government

LUP – Land-use Planning

NGO – Non-governmental Organization

PHE – Population Health Environment

PNG – Papua New Guinea

TKCP – Tree Kangaroo Conservation Program

TKCP-PNG – Tree Kangaroo Conservation Program – Papua New Guinea (local NGO)

UNDP – United Nations Development Programme

UNDP GEF-SGP – United Nations Development Programme Global Environment Facility Small Grant Programme

WPZ – Woodland Park Zoo

YUS – Yopno-Uruwa-Som

YUS CO – YUS Conservation Organization (landowner association and community-based organization)

TKCP and the YUS Conservation Area Strengthening Biodiversity Protection Throughout Papua New Guinea

Five-year grants from the Global Environment Facility and from the Rainforest Trust

We have some great news to share! Over the next five years, TKCP is partnering with the Government of Papua New Guinea to amplify our efforts to protect endangered species and support sustainable livelihoods in communities throughout YUS.

The five-year project, “Strengthening Management Effectiveness of the National System of Protected Areas,” is funded by the Global Environment Facility (GEF) and facilitated by the United Nations Development Programme (UNDP). Through this project, the YUS Conservation Area will officially serve as a model for community-based conservation in the country. We are incredibly grateful to the GEF, UNDP and PNG’s Conservation and Environment Protection Authority (CEPA) for recognizing the importance of our work and selecting YUS as a national model for community-based conservation. Through the project TKCP will continue to enhance the management of the YUS Conservation Area, developing practices for the application of PNG’s new Protected Areas Policy. Lessons and insights gained through our work in YUS will be shared with other protected areas throughout the country. Based on our model, we hope to see the PNG government establish more conservation areas in the coming years.

TKCP’s portion of the project will focus on strengthening the capacity of local communities to manage the YUS Conservation Area and will support sustainable livelihoods throughout the 50



villages across the YUS landscape. Together with the government, TKCP will lead the process of gazetting the YUS Conservation Area at the Landscape level, effectively doubling the current size of the protected area from 187,000 acres to 391,000 acres and establishing a new “YUS Community Conservation Area.” Between 2016 and 2020, TKCP will work with local landowners to successfully transition the protected area, developing systems and processes to enable effective community-level management. A five-year grant from the Rainforest Trust (USA) will support the Landscape-level expansion of the YUS CA.

Building on our work over the past 20 years, the Tree Kangaroo Conservation Program is playing a major role in protecting wildlife and biodiversity at the national level in Papua New Guinea. We are honored to share the lessons gained in YUS to guide the development of national policies for managing protected areas throughout PNG.





Highlighting TKCP's Strategic Partnerships

Long-term relationships are key to the success of TKCP and the YUS Conservation Area. TKCP partners with the Government of Papua New Guinea at the local, district, provincial, and national levels, and with many institutions both in PNG and internationally. In recognition of their vitally important role, we highlight two of our long-term local partners: Yus Local Level


Government (LLG) President, The Honorable Epemu Kiwenu, and the Morobe Provincial Administration's Environment and Climate Change Coordinator, Mr. Robin Kiki. Having local champions and partners within the local and provincial government have greatly contributed to local ownership and relevance of our programs.



The Honorable Epemu Kiwenu has championed the YUS Conservation Area since its inception, having served as Yus LLG President back in 1996, and again currently. Epemu continues to make strong commitments to conservation, setting an example for local government across the country. In 2014, Epemu created a position in the Yus LLG for the President of the YUS Conservation Organization within his executive team to advise him on conservation and environment activities and concerns across the landscape, the only known appointment of this kind in PNG. Not only working on a local level, Epemu serves as the Morobe Provincial Minister for the Environment and Climate Change, offering guidance to the Morobe Governor and National Minister for Conservation and Environment.

Epemu continues to be an active member and Chairperson of the YUS Conservation Area Management Committee (CAMC). In 2015 Epemu assisted TKCP to expand the YUS Conservation Coffee initiative by strengthening the support of the Coffee

Industry Corporation to provide training opportunities relating to coffee husbandry and post-production for farmers in YUS. Epemu has also had a significant influence over the Balob teacher scholarship program, pledging matching funds to further the impact since the program began in 2002. We thank you Epemu for your leadership, dedication and commitment.

-  Clockwise from top left:
 Robin Kiki, YUS LLG Manager Fidel Yapenare, and Honorable Epemu Kiwenu present an official pledge of support to TKCP. Photo by TKCP.
 Village and landscape in YUS. Photo by TKCP.
 Sing-sing ceremony in YUS. Photo by TKCP.
 Robin Kiki speaks with YUS community members at Singorokai village. Photo by TKCP.
 The Honorable Epemu Kiwenu chairing YUS CAMC meeting in Singorokai village, YUS. Photo by TKCP.



TKCP works closely with the Morobe Provincial Administration. For the past 10 years, Mr. Robin Kiki has ensured strong government linkages and support to TKCP and YUS. Robin's role as the Environment and Climate Change Coordinator is extremely important for Morobe Province. Under Mr. Taikone Gwakoro's leadership, Robin has been an active partner with TKCP. He was a student at the University of PNG when TKCP started in 1996, and has been following the program from the beginning.

Robin has walked the rugged YUS landscape to conduct environmental assessments, and routinely advises CAMC to ensure long-term protection and appropriate management of the YUS CA. In 2015, Robin organized provincial support to host the April CAMC meeting, marking the first time the provincial government hosted the gathering.

During the development and completion of the YUS Landscape Plan, Robin offered guidance and resources regarding the provincial government processes, policies, planning and programs. He continues to engage TKCP staff members as representatives on various committees within the Morobe Provincial Administration. He strives to ensure conservation, environment, and climate change remain priorities on the provincial level. Robin goes above and beyond his role as a TKCP partner, clearly demonstrating a drive to support a sustainable and resilient YUS Conservation Area.

TKCP Successes in 2015

2015 was an exciting year for YUS and the Tree Kangaroo Conservation Program! Great progress was made in all of our program areas. Three highlights include:

Entering its fifth year, the YUS Conservation Coffee initiative expanded across YUS to support more farmers with sustainable livelihoods. As a result, more than six tons of high-quality green coffee beans were exported to Caffe Vita in Seattle, Washington, USA.

TKCP's Healthy Village, Health Forest project continues to gain momentum throughout YUS, providing communities with knowledge on family health and an increased understanding of the link between human and environmental health. A network of Peer Educators has been established to encourage knowledge-sharing about Population, Health, and Environment, and to improve access to health services.

TKCP's research on tree kangaroo ecology included equipping two tree kangaroos with National Geographic Society Crittercam© collars to record feeding behavior and activities throughout the day. The Crittercam® collars provide a rare glimpse into the lives of tree kangaroos in the high canopy of the cloud forest in YUS. The insights and findings will assist TKCP and the YUS community in effectively managing the YUS Conservation Area for the benefit of the flagship Matschie's tree kangaroo, as well as other species.



Clockwise from top left: Clouds moving up the gorge in Tapmange village, YUS. Photo by Karau Kuna, TKCP. Father and child. Photo by Eli Weiss, WPZ. Wild tree kangaroo. Photo by Tim Laman.



TKCP'S FIVE STRATEGIES TO ENSURING A HEALTHY AND SUSTAINABLE LANDSCAPE FOR THE WILDLIFE AND PEOPLE OF YUS

Together with communities and landowners, TKCP developed five strategies to guide the efforts of TKCP and our partners to ensure the sustainable health and prosperity for the living YUS landscape including its biodiversity, people and culture.

ONE: Managing the YUS Conservation Area

TKCP works alongside government and community partners in managing the YUS Conservation Area. Conservation Area Rangers conduct patrols and ecological monitoring, and check for violations within the YUS CA. Core protected areas are mapped by Mapping Officers. Local communities are informed and engaged in the protection and management of the YUS Conservation Area.

TWO: Applying Our Research

A broad range of research topics are investigated by TKCP, partners, and outside researchers to inform the direction of conservation efforts across the YUS landscape. In addition to TKCP's ongoing studies of tree kangaroo home range and behavior, other research studies examine ecological and social questions to assess needs, define responses, evaluate impact, and contribute to the global scientific knowledge of the species, ecosystems and anthropology of YUS.

THREE: Planning for a Sustainable Future

Protecting the biodiversity and habitat of YUS requires coordinated commitment and action across the entire landscape, both in and around the YUS Conservation Area. To sustain the needs of local communities, the natural resources and services provided by the environment beyond the protected area must be sustainably maintained for the benefit of current and future generations. Managing the responsible use of the forest products, wildlife, and water in these areas will ensure the YUS communities' continued commitment to protecting the YUS Conservation Area.

FOUR: Supporting the Communities

The people of YUS rely on the natural environment for their day-to-day needs. TKCP works with communities to address their need for sustainable livelihoods, access to health, education and skills training. In partnership with the government, businesses, and other NGOs, TKCP builds connections to provide YUS communities with alternative opportunities which build local resilience and reduce the threat of short-term financial gain through large-scale resource extraction.

FIVE: Operating the Tree Kangaroo Conservation Program

The YUS Conservation Area initiative attracts substantial worldwide attention and support. Managing such a program requires robust planning, administrative capacity and highly competent staff. TKCP remains committed to building the resources and staff capabilities to maintain long-term support for the landscape, wildlife and people of YUS.



Managing the YUS Conservation Area

Under Papua New Guinea's Conservation Areas Act, the YUS Conservation Area must be properly managed in perpetuity. Management of the YUS Conservation Area includes several components that combine to ensure a successful protected area which is owned by the local landowner stewards. These components include the YUS Conservation Area Ranger program, Community Awareness-raising, Mapping, and the YUS Conservation Area Management Committee.



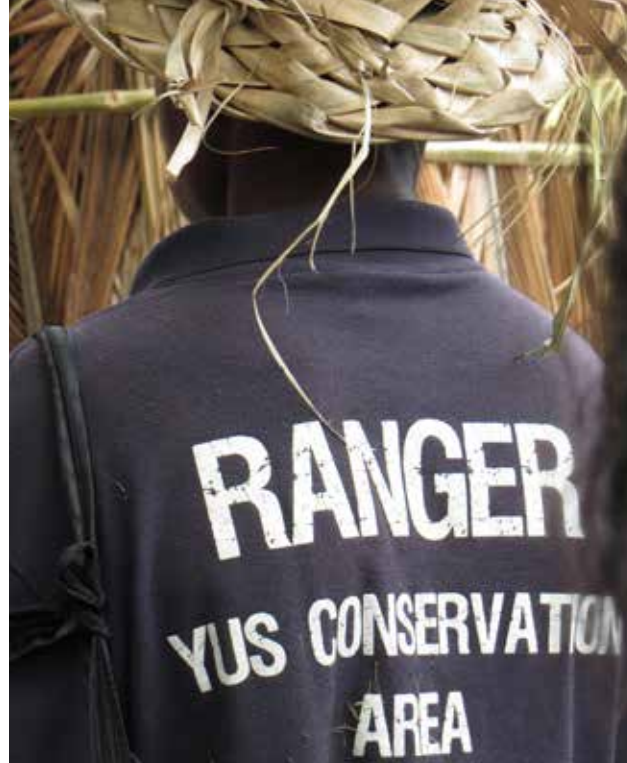
Clockwise from top left:

TKCP Mapping Officer Matthew Tombe using GPS to map the YUS Conservation Area near Weskokop village. *Photo by Karau Kuna, TKCP.*

Research & Monitoring Coordinator Daniel Solomon Okena. *Photo by Karau Kuna, TKCP.*
YUS Conservation Area Ranger. *Photo by TKCP.*

Community volunteers learn new skills in marine monitoring. *Photo by TKCP.*

Marine specialist Job Opu (in front), TKCP's Daniel Okena (right), and community members install a sign marking a protected turtle nesting site in YUS. *Photo by TKCP.*



YUS Conservation Area Rangers

Established in 2012, the YUS Conservation Area (CA) Ranger team is responsible for patrolling and monitoring wildlife inside and outside of the YUS Conservation Area. The YUS Conservation Rangers are local landowners, nominated by their own communities to conduct patrols and evaluate the effectiveness of conservation efforts in YUS. During 2015 each of the 13 YUS Rangers spent one week per month patrolling areas within the YUS CA. They record the presence or absence of several community-identified priority animal species key to achieving conservation goals, and check for potential violations of the bylaws governing the YUS Conservation Area (see a list of priority species on page 5). Observations during patrols throughout the year indicate increased sightings of previously-scarce wildlife, suggesting that the protected areas are having a positive impact for the biodiversity of YUS. In June, TKCP's Research and Monitoring Coordinator, Mr. Daniel Solomon

Okena, provided training for the YUS CA Ranger team for improved data collection, patrol planning and community engagement. To guide the continued development of the YUS Conservation Area Ranger program, building upon lessons and best practices throughout the globe, Oregon State University Wildlife Management graduate student Jackie Delie focused her capstone research on the role of indigenous rangers as environmental stewards. Jackie's research includes a case study of the YUS CA Ranger program and provides TKCP with valuable insights into their role as community conservation champions. Okena and Mikal Nolan met with Jim Barborak and Ryan Finchum with the Center for Protected Area Management at Colorado State University to discuss ranger programs globally and learn more about the International Ranger Federation (www.internationalrangers.org).

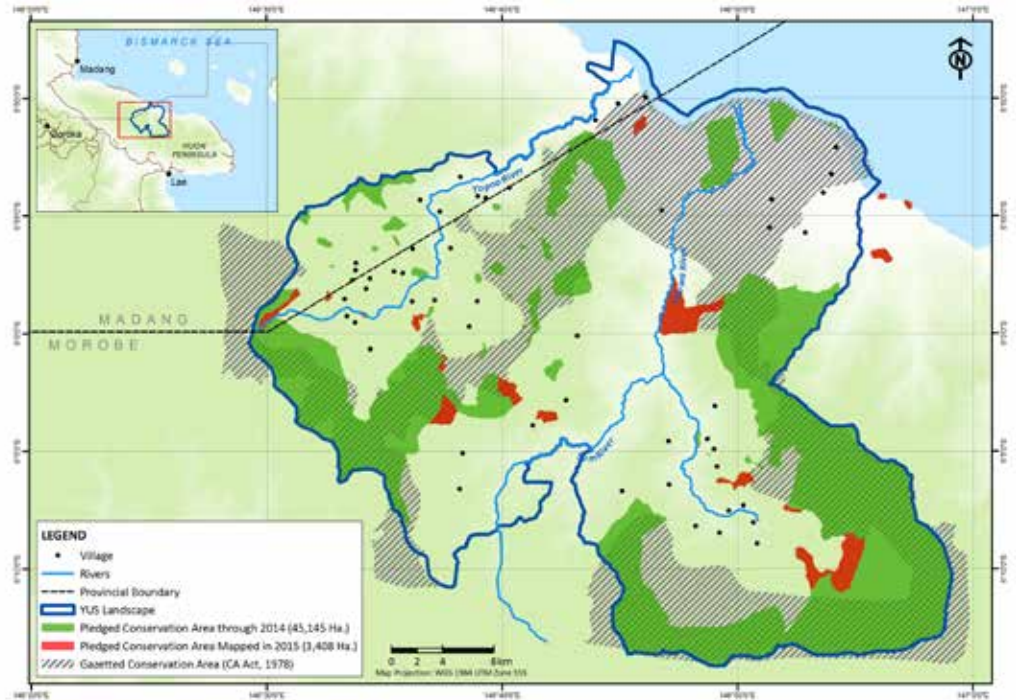
YUS RANGER FUNCTIONS

1. Conduct monthly patrols and gather data using the YUS CA Record Book
2. Serve as community liaisons to convey findings and advocate for conservation among local YUS communities
3. Participate in the YUS Ecological Monitoring Program
4. Provide field assistance for research conducted in the YUS CA

Governing the YUS Conservation Area

MAPPING AND CONSERVATION AREA AWARENESS

Together with Conservation Strategies Manager Karau Kuna and TKCP's ward-level land-use planning efforts, Mapping Officers Victor Eki and Matthew Tombe continued to map parcels in the YUS Conservation Area during 2015 in order to confirm boundaries, and to lead community awareness of the value of land pledges to further enhance protection throughout the YUS CA. 3,408 hectares of pledged land were mapped during 2015. In addition to mapping the YUS Conservation Area, the TKCP team is mapping clan land boundaries and coffee garden areas throughout YUS to help with land-use planning.



Through 2015, a total of 48,553 hectares (119,977 acres) of YUS Conservation Area have been mapped, including designated reforestation sites and 30-meter riparian corridors along the rivers and tributaries of YUS. Landowners continue to pledge additional land and marine areas every year as a result of TKCP's successful Land-use Planning process and benefits received from participation in TKCP's livelihood program.

YUS CONSERVATION AREA MANAGEMENT COMMITTEE

According to the PNG Conservation Areas Act, the YUS Conservation Area Management Committee represents all stakeholders in the decision-making for long-term management of the protected area. The committee's members include:

- YUS landowners
- Kabwum District Administrator
- Morobe Provincial Government representative
- Conservation & Environment Protection Authority representative (National Government)
- President of the Yus Local Level Government
- President of the Wasu Local Level Government
- Program Manager of Tree Kangaroo Conservation Program

The YUS Conservation Area Management Committee (CAMC) plays an integral role in encouraging communication among the various stakeholders of the YUS Conservation Area, from the community level to the provincial and national government level. The committee meets twice a year to discuss key management issues and provide strategic direction for the YUS Conservation Area.

In April, the CAMC met in Lae to discuss a range of issues, including the implications of PNG's new Protected Areas Policy, the ongoing transition of the Department of Environment and Conservation (DEC) to the Conservation Environment Protection Authority (CEPA), and findings from YUS Ranger monitoring patrols. In September, the committee met in the coastal village of Singorokai and participated in TKCP's marine monitoring activities. TKCP Director Dr. Lisa Dabek attended the CAMC meeting in Singorokai, and the entire group went out by boat to see the two protected reefs to gain a first-hand perspective and establish a baseline for future monitoring.



Marine Ecosystem Protection

TKCP continued to enhance the protection of marine ecosystems within the YUS Conservation Area in 2015. Building upon a series of workshops and marine biodiversity surveys conducted by marine specialist, Mr. Job Opu, and in cooperation with PNG-based marine specialists from Mas Kagin Tapani (MAKATA), a community-based monitoring plan is being developed and trialed to enable community volunteers to conduct community-level analysis of marine and coastal resources along newly-established transects. Focusing on community-identified conservation priority species, the monitoring plan will link with land-use plans developed in 2013 and will enable local landowners to evaluate the effectiveness of their coastal and marine conservation actions. The plan will also aid TKCP in assessing the effectiveness and needs for the management of the YUS Conservation Area. Through community consultations, Job assisted TKCP to establish marker buoys and signage around the protected reefs and turtle nesting sites to increase community awareness of the area's boundaries. Job has also played a significant role in building the capacity of TKCP's Marine Ranger Hesiya Manok.

Due to the increased understanding of the fragile marine ecosystem and the value of managing resources sustainably, coastal fishers and other community members in the Nambis (Coastal) Zone of YUS have expressed their commitment to cease several destructive fishing and harvesting techniques in the coastal reefs, sea grass beds and along the shorelines. The TKCP team, along with Yus LLG President Hon. Epemu Kiwenu and Morobe Provincial Environment Coordinator Robin Kiki, made a visit to see the protected reefs and gain first-hand knowledge of the extent of the marine protected area (See marine priority species on page 5).



Clockwise from top left:

Mapped areas of the YUS Conservation Area as of 2015.

Map by Karau Kuna, TKCP.

TKCP team and YUS CAMC members visit protected reefs near Singorokai village within the YUS Conservation Area. Photo by Karau Kuna, TKCP.

TKCP Conservation Strategies Manager Karau Kuna inspects coral reefs in the protected marine area of YUS. Photo by TKCP.

From left: Timmy Sowang, Robin Kiki, Madeline Lahari, Laris Bartsaka, Botty Kwisal, Trevor Holbrook, Mikal Nolan, and Daniel Okena were presented with bilums (handmade bags) from Robin's family, featuring the flag of their native Eastern Highlands province following the YUS CAMC meeting in April 2015. Photo by TKCP.



Future Plans

- Supply YUS Rangers and Conservation Officers with equipment and appropriate technology to support YUS Conservation Area monitoring data collection and analysis
- Pilot the use of Spatial Monitoring And Reporting Tools (SMART) through the SMART Network
- Increase community awareness of YUS CA boundaries and bylaws using informational materials, signposting, and partnering with government to train local court officials
- Conduct ecological monitoring of priority species across the YUS landscape
- Enhance the effectiveness of the YUS Conservation Area Management Committee
- Initiate process for re-gazettal of YUS as a Landscape-level Conservation Area

Applying Our Research

The long-term success of conservation efforts in YUS depend upon a thorough understanding of the area's biological and cultural diversity. TKCP contributes to this knowledge through its research on tree kangaroo ecology, as well as through collaborative partnerships and the promotion of YUS as a site for additional research across a wide range of environmental and social topics.

Tree Kangaroo Ecological Research

TKCP works to advance scientific knowledge of Papua New Guinea's wildlife and rain forest habitat so that the YUS Conservation Area can be managed in an ecologically sound and sustainable manner. Having studied wild Matschie's tree kangaroos in YUS since 1996, we continually seek to gain a greater understanding of the species we are trying to protect, and assess the effectiveness of our conservation efforts.

The Tree Kangaroo Conservation Program continues to study the feeding ecology, behavior, and habitat use of Matschie's tree kangaroos at multiple elevations throughout their distributional range (1,000 to 3,500 meters). Building on our previous home range research conducted at 3,000 meters, TKCP established two other research sites at a lower elevation of 1,500 meters.

In September 2015, a research team including TKCP Director Dr. Lisa Dabek, TKCP Research & Monitoring Coordinator Daniel Solomon Okena, lead trackers Stanley Gesang and Max Manap, and a team of local landowner research assistants attached National Geographic Society CritterCam® collars to two Matschie's tree kangaroos. Set to record for 15-minute intervals every two hours between 6 a.m. and 7 p.m. daily for five days, the CritterCams® captured valuable video data regarding feeding behavior and activity throughout the day. TKCP is collaborating with the Papua New Guinea Forest Research Institute (PNG FRI) and staff of the Papua New Guinea National Herbarium in Lae to identify food plants in the tree kangaroo diet. Using knowledge from Crittercam® video footage and local knowledge of hunters in YUS, TKCP collected plant samples for identification as well as for a future study on the nutrition of food plants. The nutrition project is being carried out in collaboration with Dr. Ellen Derenfeld and the AZA Tree Kangaroo Species Survival Plan (TK-SSP). Insights gained through the CritterCam® research will be used to inform decisions regarding the size and make-up of the YUS Conservation Area in order to meet the needs of the flagship species.



Clockwise from top right:

Daniel Okena and YUS research assistants Libert and Johnson preparing food plant samples for the National Herbarium. *Photo by Lisa Dabek, TKCP.*

Lead tracker Stanley Gesang locating a radio-collared tree kangaroo in YUS using a VHF antenna. *Photo by Daniel Okena, TKCP.*

Tree kangaroo with a NGS Crittercam® collar before release. Thanks to Kyler Abernathy, Remote Imaging, National Geographic Society. *Photo by Lisa Dabek, TKCP.*

Daniel Okena testing GPS transmitters for potential future use on tree kangaroos. *Photo by Lisa Dabek, TKCP.*

Lisa Dabek looking at flagged points from tree kangaroo tracking. *Photo by Daniel Okena, TKCP.*



Research Collaboration

TKCP and YUS landowners, along with the YUS Conservation Organization, partner with a broad range of research institutions and scientists to answer key questions defined in the YUS Landscape Plan. Research findings can inform management decisions and guide the direction of the YUS Conservation Area.

In 2015, wildlife sound recording specialist Tony Baylis returned to YUS to capture the sounds of local bird species on the Huon Peninsula. Tony's research visit sought to build a more comprehensive library of wildlife recordings to support further research into species presence, abundance and geographic distribution. During his field research near one of the established camps along the YUS elevational transect, Tony observed and recorded the endemic Huon bowerbird (*Amblyornis germana*). To attract the attention of female bowerbirds, males build and decorate elaborate structures called "bowers" as a stage for its display. Tony's visit was featured in the July 2015 issue of the Birds Queensland Newsletter, and his Huon bowerbird research findings were published in the Journal of the Australian Wildlife Sound Recording Group.

Future Plans

TKCP is always seeking opportunities to connect with researchers and scientists to investigate questions across the YUS landscape.

- Complete a strategic plan for long-term tree kangaroo research in YUS
- Establish an ecological monitoring plan for marine species and ecosystems
- Explore social issues relating to sustainable management of the YUS Conservation Area
- Revise the ecological monitoring plan for YUS terrestrial species and ecosystems

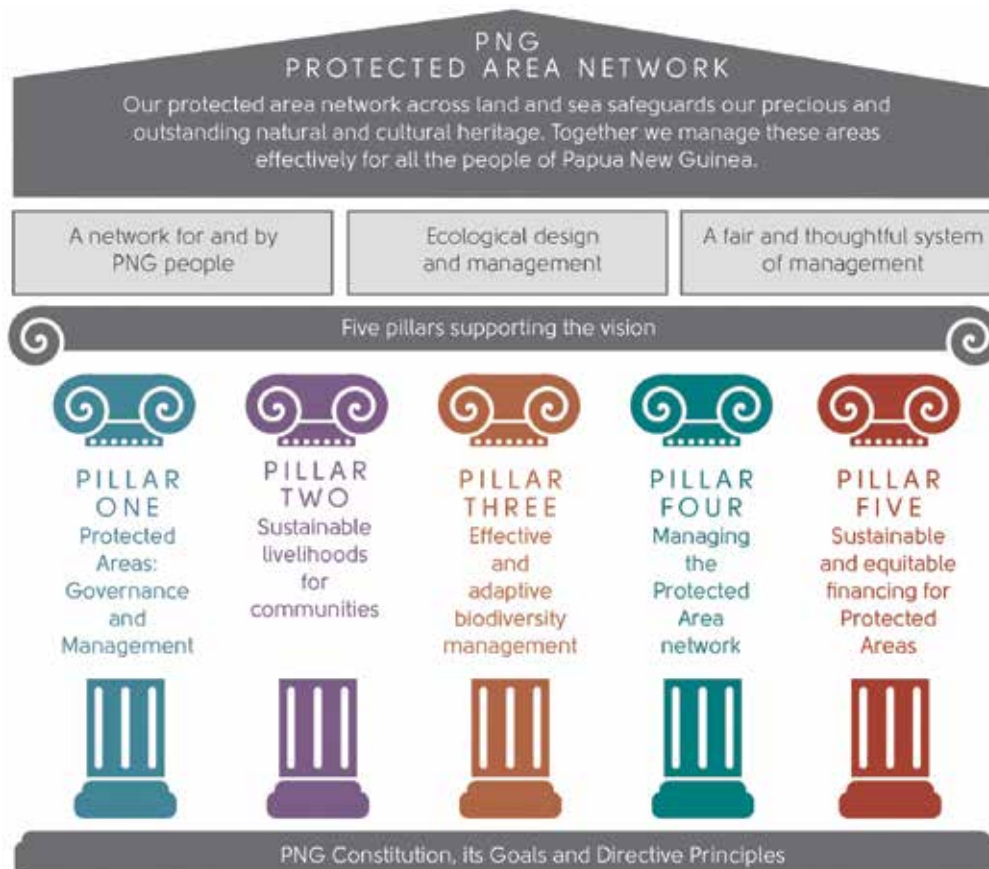
Planning for a Sustainable Future

Ward-level Land-use Planning

Beginning in 2011, TKCP has worked together with villages throughout YUS to develop land-use plans which outline community priorities for conservation and development, as well as establish zoning maps to aid in effective local resource management. Led by Conservation Strategies Manager Karau Kuna, TKCP's Land-use Planning (LUP) process has been recognized by the National Government of Papua New Guinea and other organizations as a model for engaging communities in conservation efforts. Based on lessons and insights from Land-use Planning in YUS, the process has been integrated into PNG's new Protected Areas Policy to support Effective and Adaptive Biodiversity Management (Pillar Three) in protected areas throughout the country (see illustration below).

Following the completion of Land-use Plans across all 18 wards (groups of villages) in YUS between 2011 and 2014, Kuna and the LUP team invited community representatives to

participate in a series of workshops to review and re-confirm the ward-level Land-use Plans. The workshops served to assess progress, discuss how the plans have been put into action, and identify areas for additional focus. During the review and evaluation of the plans, the representatives reflected on the status of their community's conservation priority species, re-prioritized development needs, and assessed local adherence to their defined land-use zones. The representatives shared their experiences in communicating the plans among their villages and using the LUPs to guide local decision-making. By reconfirming conservation and development priorities and defining community-led action plans, the workshops provided a valuable opportunity for YUS landowners to define objectives and solidify their commitment to sustainable resource management. YUS is a model program for PNG's Protected Area Network Policy.



Clockwise from top right:

Land-use planning reconfirmation workshop in Yawan village. Photo by Trevor Holbrook, TKCP.

Land-use planning reconfirmation workshop in Yawan village. Photo by TKCP.

TKCP Conservation Strategies Manager Karau Kuna facilitates a LUP monitoring workshop. Photo by TKCP.

TKCP Conservation Officer Namo Yaoro leads a break-out discussion during a land-use planning reconfirmation workshop. Photo by TKCP.

Illustration of Papua New Guinea's new Protected Areas Policy framework. TKCP's Land-use Planning approach has been incorporated into Pillar Three to support the management of protected areas throughout the country. Source: Papua New Guinea Policy on Protected Areas, 2015.

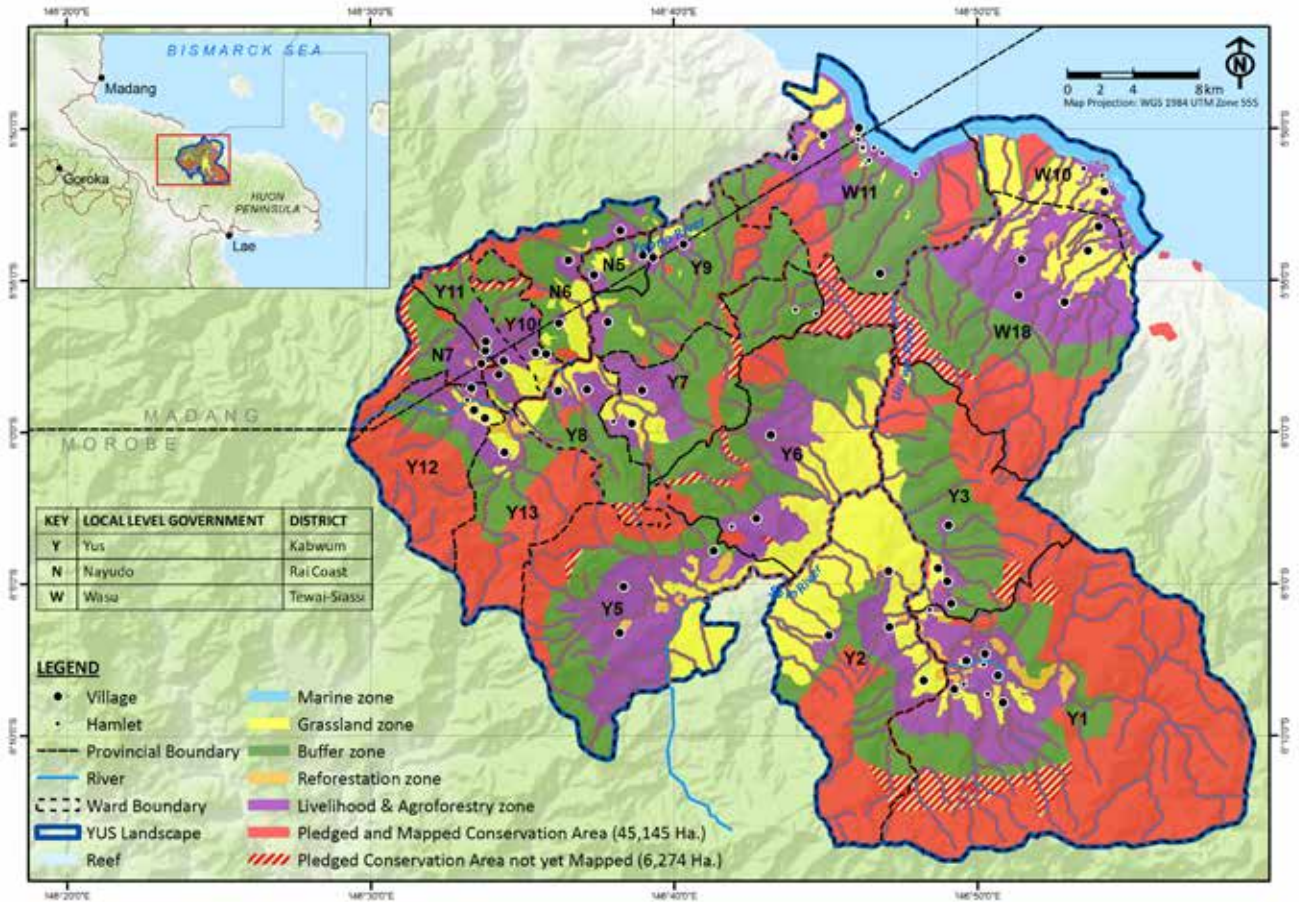


I have seen evidence of tree kangaroos, cassowaries and lots of possums, and I am happy that my Sapun Clan made the right decision to pledge land (to the YUS Conservation Area).

*Fifu Kuyo – Saburong Village
Fifo is now serving in a leadership role in the community-based organization, YUS Conservation Organization.*



To complement the LUP reconfirmation efforts and further strengthen sustainable resource management at the local level, TKCP assisted the wards in developing community monitoring plans to measure progress and conservation impact. Facilitated by Kuna and his LUP team including Research & Monitoring Coordinator Daniel Okena and Leadership Training and Outreach Senior Coordinator Danny Samandingke, the monitoring workshops introduced participants to the purpose and methods of monitoring and evaluation and the benefits for local resource management. The ward representatives developed draft monitoring plans, which will be refined and completed during a second round of workshops in 2016.



Future Plans

- Develop a community monitoring plan for evaluating the effectiveness of land-use plans
- Build capacity of local government to implement land-use plans
- Increase community ownership of conservation through the use of participatory three-dimensional land-use mapping



Top to bottom:

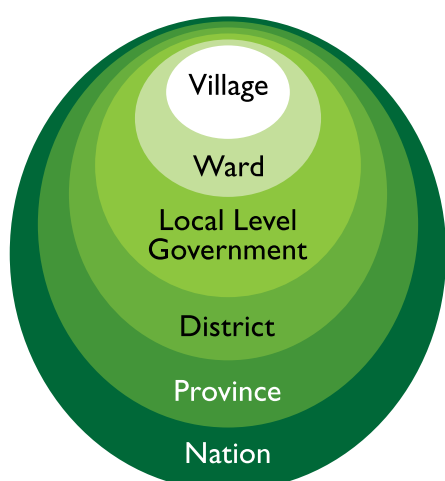
Daniel Okena presents the priority matrix for conservation decision-making during the land-use planning reconfirmation workshop in Tapmange village. Photo by Karau Kuna, TKCP.

TKCP Mapping Officer Victor Eki (standing) lends advice during a land-use planning reconfirmation workshop in Yawan village. Photo by Karau Kuna, TKCP.

Mosaic of ward-level land-use plans comprise a zoned map of the YUS landscape. Map by Karau Kuna.



STRUCTURE OF GOVERNANCE IN PAPUA NEW GUINEA



The multiple levels of governance in PNG. TKCP works with all levels for the management and sustainability of the YUS Conservation Area.

I used to be a great hunter, but have given up the practice of hunting. I was the first to meet (TKCP Founder/Director) Lisa 20 years ago, and I showed her where to find the tree kangaroos in our forest. This conservation initiative has put YUS on the world map and has brought a lot of visitors to our communities. Since then, I decided not to use bows and arrows to shoot any kind of wildlife. The other day, I was surprised to see a Matschie's tree kangaroo eating leftover crops in my pig pen! I watched without disturbing until it finished eating and left. I am happy to see this evidence of our success, although it is still an uncommon sighting.

Mambawe Manaono – Kumbul Village

As one of the first landowners in YUS to pledge land for conservation, Mambawe serves as an Advisor for TKCP.

We have always sold 60 kg bags of parchment coffee on the local market for a price of PGK30.00 – PGK50.00. We had to sell many bags in order to earn enough funds for schools fees. Some parents had given up. But now with TKCP's livelihoods project, we are able to receive about PGK300+ per 60 kg bag of parchment coffee for direct export. We are now able to send our kids to high schools and colleges.

*Dono Ogate – Yawan Village
Dono is also a TKCP Conservation Officer.*



Supporting the Communities

To ensure the long-term sustainability of the YUS Conservation Area, local communities must participate in and benefit from its protection. To encourage community engagement and sustainable development, TKCP builds partnerships to address local needs for livelihoods, health, education, and skills training. These partnerships provide increased access to essential services, access to markets and technical knowledge, and support for local leadership of conservation efforts.

Livelihoods

CONSERVATION COFFEE

2015 was an excellent year for TKCP's YUS Conservation Coffee initiative in partnership with Seattle's Caffe Vita, a coffee roaster committed to socially and environmentally responsible coffee. Entering its fifth year, the project expanded beyond its pilot areas in Uruwa zone to include farmers from villages in Yopno and Som zones. Supported in part by a partnership between TKCP and Zoos Victoria in Melbourne, Australia, farmers were trained in coffee husbandry and post-production management, resulting in a milestone of six tons exported from YUS for Caffe Vita! The shipment is more than twice the size of last year's export, highlighting both the increasing demand and the strengthened capacity of YUS farmers to produce and deliver high-quality coffee beans. The additional participation of farmers from Yopno and Som zones further enhances habitat and wildlife protection throughout YUS, as the initiative reinforces their commitment to the YUS Conservation Area and its bylaws.

Seeking to expand access to markets for farmers in YUS, TKCP

and Zoos Victoria approached Australian roaster Jasper Coffee to explore the opportunity for the export and sale of YUS Coffee in Melbourne, another major city with a strong coffee culture. Based on initial samples, Jasper has expressed great interest in partnering with YUS farmers and has committed to purchasing its first shipment of YUS Coffee in early 2016.

By providing coffee farmers in YUS with access to technical knowledge and premium international coffee markets, TKCP's YUS Conservation Coffee initiative has helped farmers earn nearly 80,000 Papua New Guinea kina (approximately US \$30,000) more than they would have earned through local markets. This income premium makes coffee production a viable livelihood, and helps families in YUS to cover expenses for their education and health needs.



I have four kids and all of them are in schools. Affording our kids' education is not an easy thing. I thank Caffe Vita for buying my coffee, which enabled me to pay my kids school fees for the last four years. As a parent, it is a continuous battle to afford school fees. But now we are happy that there is a new door of opportunity to ease our burden.

Boting Uki – Worin Village

Boting is one of the original farmers participating in the YUS Conservation Coffee project.



CONSERVATION COCOA

With support from UNDP's GEF Small Grants Programme and Vibrant Village Foundation, TKCP aims to replicate the success of the YUS Conservation Coffee initiative among the cocoa-producing villages along the coast of YUS. TKCP's Community Services & Livelihoods Manager, Ben Sipa, visited the coastal villages of YUS together with three representatives from the PNG Cocoa Board to assess the needs and develop plans for improving cocoa quality. Ben and the representatives met with more than 150 farmers and community members, visited cocoa gardens, and inspected 13 fermentries to gain insights into current production practices and challenges. The PNG Cocoa Board provided on-site guidance and initial recommendations

regarding quality control methods, and TKCP is awaiting the Board's full assessment report. To support greater coordination and management of cocoa production among farmers, Ben provided cocoa farmers and fermentries with record books and conducted trainings for production data collection.

After years of advice and guidance from Theo Chocolate, and especially Nathan Palmer-Royston, TKCP shared cocoa samples with Greg D'Alesandre of San Francisco-based Dandelion Chocolate. Dandelion provided recommendations for improving the quality and flavor of the cocoa, expressing optimism for the potential of YUS cocoa and an interest in collaborating with TKCP and farmers in YUS.

YUS CONSERVATION COFFEE AND COCOA COOPERATIVE

In 2015, TKCP sought to enhance farmer understanding and organizational skills to strengthen grassroots management of the coffee and cocoa initiatives. The newly formed YUS Conservation Coffee and Cocoa Cooperative has submitted formal registration with the Morobe Provincial Division of Commerce. Following consultations with coffee and cocoa

farmers throughout YUS, each zone sent representatives to Lae in March to meet with TKCP's Ben Sipa to offer feedback and direction during the inception of the YUS Conservation Coffee and Cocoa Cooperative. The Coffee Industry Corporation has offered significant guidance throughout the formation of the Cooperative.



Clockwise from top left:

Boting Uki. Photo by TKCP.

Benjamin Sipa speaks with cocoa farmers during a visit with representatives from the PNG Cocoa Board. Photo by TKCP.

YUS Conservation Cocoa farmer and his cocoa harvest at Ronji village in YUS. Photo by Benjamin Sipa, TKCP.

TKCP Community Services & Livelihoods Manager Benjamin Sipa inspects a local cocoa fermentry in YUS during an assessment visit with representatives from the PNG Cocoa Board. Photo by TKCP.

Caffe Vita's Papua New Guinea Yopno-Uruwa-Som coffee is sold at Woodland Park ZooStores, Caffe Vita locations, and online at www.caffevita.com. Photo by Jeremy Dwyer-Lindgren, WPZ.

YUS CONSERVATION COFFEE – A FARMER’S PERSPECTIVE

A COMPILATION OF THE LIVES AND EXPERIENCES SHARED BY YUS CONSERVATION COFFEE FARMERS

By Benjamin Sipa

Our parents used to tell us stories about a money-making tree brought to YUS by missionaries generations ago. The tree was called coffee. It was first planted in Boksawin village in the early 1950s, and eventually grown in many villages throughout YUS. We had heard about how coffee had changed the lives of farmers in other parts of Papua New Guinea, where there was better access to transportation. But in the steep remote mountains of YUS, the coffee beans had to be carried for several days to the market in town. For all of the time and difficulty, our families could not make any profit. In most villages, the coffee trees were abandoned to the forest many decades ago.

Although we are very fortunate to own our land and provide for our own subsistence, it is virtually impossible in this day and age to live without basic tools, cooking utensils, clothes, and money for health and education. As parents, our greatest dream is that our children are able to go to school. In order to pay the school fees, we strive to earn money with what we have. We sell our dried tobacco leaves and garden produce at markets in the nearby towns of Madang and Lae. When this is not enough, we search and compete for scarce jobs as laborers.

With the support of the Tree Kangaroo Conservation Program to connect us with Caffe Vita in Seattle, we coffee farmers in YUS have hope that our coffee trees will no longer go to waste. Through this partnership we are now able to overcome our challenges by producing high-quality beans and exporting directly to Caffe Vita. Because we, as landowners and

With the support of the Tree Kangaroo Conservation Program to connect us with Caffe Vita in Seattle, we coffee farmers in YUS have hope that our coffee trees will no longer go to waste.

stewards of YUS, have committed to protecting our forest and the wildlife we share it with, our coffee earns us a premium price which we could never earn in the local markets. The additional income allows us to send our kids to school and provide them with the items they need to help them learn.

Beyond buying our coffee, Caffe Vita has worked with us for years to share their experience and expertise in coffee husbandry and production quality control. Through hard work and hands-on learning, we have outgrown our past disillusion about our coffee crops. Having seen the potential and hearing of the excitement from satisfied coffee-drinkers in Seattle, our farmers are

now becoming much more organized, knowledgeable, and committed to YUS Conservation Coffee.

Five years in, we have gained the confidence and earned the financial capital to invest in our business to continue improving the quality of our coffee. We take pride in the conservation commitment we have made, which has established YUS as the first and only Conservation Area in Papua New Guinea, and it has opened the door of opportunity for our livelihoods as subsistence farmers.

Because of our commitment to conservation, we are beginning to see more wildlife in and around our coffee gardens. Because of the benefits brought by our YUS Conservation Coffee, we now have an even greater respect and appreciation for the birds and animals we share our forest with. We are honoured to take responsibility for protecting the biodiversity and habitat of YUS, so that our future generations can enjoy our environment and our lifestyle.



Clockwise from bottom left:

AZA's Sandra Elvin shopping for YUS Conservation Coffee at Caffe Vita's new location in New York City, USA.

Bags of green coffee beans are flown out of YUS. Photo by Robert Liddell.

YUS landowner and coffee farmer Berau Giebac inspects his coffee trees. Photo by Ryan Hawk, WPZ.

YUS Conservation Coffee farmers sort freshly-picked coffee cherries by hand at Yawan village.

Photo by Benjamin Sipa, TKCP.







Health

HEALTHY VILLAGE, HEALTHY FOREST

In partnership with Vibrant Village Foundation, TKCP Health Team, and Seattle Rotary, TKCP continues to expand health knowledge and strengthen community networks for greater access to essential health services throughout YUS. TKCP's Healthy Community Coordinator, Melanie Palili, conducted a series of Peer Educator trainings for both adults and youth, focusing on the interaction and relationship among "Population, Health, and Environment" (PHE). The PHE approach educates communities about how a healthy environment is an integral element for maintaining healthy families. The trainings build the capacity of youth and adult Peer Educators across YUS who lead in educating their communities on the linkages among population and the environment, ecosystems, physiology, gender, sexuality, fertility, contraception, safe sex, sexually transmitted infections, HIV/AIDS, and related reproductive health topics that will encourage youth and adults to become stewards of the environment and their health.

Melanie facilitated Peer Educator trainings in Yopno, Som, and Nambis Zones, reaching more than 200 participants representing 40 villages throughout YUS. The newly-trained PHE Peer Educators have established committees to oversee and coordinate Peer Educator awareness-raising activities within their zones, and to serve as a support network for mutual learning. Peer Educators are also responsible for referring community members to the appropriate health facilities for further information and care. As the network



I've built a little house that I can use to attend to clients. I have two roles now. I have more clients and I need a more appropriate place to discuss private

issues. I need basic items for the house like a bed, PHE pamphlets and other VBA (midwife) supplies. I've written a letter to the Local Level Government to support me with supplies. The house is situated next to a pathway crossing, just where I want it so that when people are walking to their villages they will see the house and come in for a chat.

Heri Yowa is a trained Village Birth Attendant (midwife) and PHE Adult Peer Educator from Isan village in Yopno zone

Heri has been a VBA for over 10 years, and took on the additional role of Peer Educator in 2015. As a Peer Educator, Heri is now motivated to provide advice for women and mothers about reproductive health and family planning in addition to childbirth and prenatal care. After taking the role of Peer Educator, Heri built a small resource center for her visiting clients.

of Peer Educators continues to expand throughout YUS, essential health knowledge is spreading through increased awareness and word-of-mouth.

TKCP continues to develop partnerships with several health-focused organizations to further strengthen the Peer Educator networks and improve the YUS community's access to essential services. Throughout trainings in 2015, TKCP collaborated with non-governmental organizations including Marie Stopes, PNG, Population Services International, and government agencies including Provincial AIDS Counsel Secretariats and Local Level Government health officials.

In September, Melanie and the Peer Educators presented to the YUS Conservation Organization and the TKCP staff during meetings in Singorokai village. In October, Melanie and five Peer Educators from YUS presented TKCP's PHE approach during the Morobe Show Health Expo in Lae. Advice was given throughout the year from the volunteer Health Team including Drs. Rob and Marti Liddell, Blair Brooks, Nancy Philips, and Susan Barkan PhD.



I enjoy spending time with our village elders, because I want to hear them speak and learn from them. I always wanted to be a leader in the village and take a leading role in developing my community. By attending the Population Health Environment training and being appointed Chairperson for the Youth Peer Educator Network, this is the first step toward fulfilling my dream.

Nonare Koma, Youth from Kumbul village



I like my village, it has lots of rivers and trees. I came to the PHE training to learn so that I can go back and educate people not to burn and cut trees unnecessarily. I now feel confident to talk to other youth about family health and about our ecosystem. I usually don't have that confidence.

Cilia Bondex, Youth from Ronji village



Clockwise from top left:

TKCP's Healthy Village, Healthy Forest booth at the Morobe Show Health Expo in Lae. Photo by TKCP.

Melanie Palili (center) and YUS Peer Educators presenting to the TKCP staff and YUS CO in Singorokai village. Photo by Mikal Nolan, TKCP.

Participants at TKCP's Peer Educator workshop. Photo by TKCP.

TKCP's Melanie Palili (right), co-facilitator Sister Baleb Wahazoka, and a Peer Educator share information about reproductive health during a workshop in the coastal Nambis Zone of YUS. Photo by TKCP.

YUS Peer Educators from Yopno Zone and TKCP's Melanie Palili (second from right) presenting the Population-Health-Environment approach during the Morobe Show Health Expo in Lae, October 2015. Photo by Mikal Nolan, TKCP.

Peer Educator workshop participants discuss ecosystem health. Photo by Melanie Palili, TKCP.

Education and Capacity-Building

BALOB TEACHER'S COLLEGE SCHOLARSHIP FOR YUS STUDENTS

TKCP's teacher scholarship program is often regarded as essential in ensuring that the next generation of YUS leaders and landowners are educated. For over a decade, TKCP has helped to fill vacant teaching positions in YUS with qualified teachers through a scholarship program. Since 2002 TKCP has helped 23 YUS students to graduate as qualified teachers who return to alleviate teacher shortages and lead environmental literacy programs in YUS. Four additional teachers supported by TKCP have been promoted to senior positions throughout Morobe Province.

To encourage sustainability and local ownership of the scholarship program, TKCP is proud to have transferred the scholarship management to the community-based YUS Conservation Organization in 2015. For the first time, the YUS CO assisted their scholarship recipient with registration in the certificate program at Balob Teacher's College. TKCP congratulates Mr. Wycliffe Awapmon Muprie from Mangan village, Yopno zone for his acceptance into the expanded three-year program. Wycliffe will return to teach students in YUS upon completion of his studies.



Top to bottom:

TKCP's Danny Samandingke facilitates a discussion with community members in YUS to develop the Junior Ranger Program concept according to community needs and priorities. *Photo by Eli Weiss, WPZ.*

Early childhood Junior Rangers and their parents took a field trip into the forest near Weskokop village to learn about YUS wildlife. *Photo by Eli Weiss, WPZ.*

Children and youth study the wildlife of YUS in TKCP's pocket identification guide with WPZ's Eli Weiss. *Photo by Danny Samandingke, TKCP.*

Children present drawings from their observations during a field trip in the forest of YUS. *Photo by Eli Weiss, WPZ.*

Eli Weiss, Woodland Park Zoo's Community Engagement Supervisor (right), and TKCP Leadership Training and Outreach Senior Coordinator Danny Samandingke discuss the Junior Ranger Program model with community members in Weskokop village. *Photo by Karau Kuna, TKCP.*

JUNIOR RANGERS

Seeking to inspire leadership and instill an appreciation for the environment among youth in YUS, TKCP's Leadership Training and Outreach Senior Coordinator Danny Samandinge collaborated with Woodland Park Zoo's Community Engagement Supervisor Eli Weiss. Eli was supported to travel to YUS through a WPZ ZooBright Fellowship. They facilitated a series of community-level program design workshops in YUS to further develop a framework for the pilot of TKCP's Junior Ranger Program. They organized meetings and activities in YUS with teachers, parents, and youth to understand their aspirations, needs and challenges.

Based on the community's feedback, TKCP aims to implement the first phase of the Junior Ranger Program in several villages in Yopno and Uruwa zones in 2016. The program, built on the pillars of education, stewardship, and leadership, will engage youth in local conservation efforts and provide a venue for sharing traditional ecological wisdom. Once established, the Junior Ranger Program will engage three age groupings:

- Early Childhood and Parent Education will focus on increasing environmental literacy and awareness
- Primary School-aged Learning Opportunities will engage youth in community conservation efforts
- Post-Primary Leadership Development will support youth in becoming responsible stewards and leaders

The future conservationists participating in the pre-kinder Junior Ranger Program pilot in Weskopo and Tepetep villages in 2015 engaged in activities promoting numeracy and literacy skills, community conservation action, biodiversity and ecosystem services, and the roles and responsibilities of individuals within a community. Older youth and young adults can serve as volunteers to support the pre-kinder pilot program, gaining leadership and teaching experience which will hopefully prove beneficial in their future endeavors. This pilot program is a great collaboration between Woodland Park Zoo and YUS.





YUS Community Organization

The YUS Conservation Organization (YUS CO), a community-based organization comprising of 21 men and women from across the YUS landscape, has evolved into a strategic partner for TKCP. It is an organization of landowners who pledged land for the YUS Conservation Area, advocate for community initiatives and advise TKCP on YUS community needs.

Together the two organizations seek to encourage appropriate management decisions for YUS CA, and endeavor to meet the needs of people, communities and environment.

YUS CO renewed the appointment of its Executive Leadership:

President: Timmy Sowang
Vice President: Nomis Simon
Secretary: Sanangke Yape
Vice Secretary: Samun Buku
Treasurer: Botty Kwisal
Vice Treasurer: Fifu Kuyong
Scholarship Chair: Annie Ogate

To support the continued development of the YUS CO, TKCP's Mikal Nolan and Laris Bartsaka conducted a series of workshops to train YUS CO Executive Members in financial management practices and strengthen financial literacy. During the workshop, the financial team reviewed the organization's financial policies and expenditures in 2014, finalized their 2015 budget, and prepared their first grant expense report. Danny Samandingke led YUS CO members through a participatory evaluation process to guide reflection on project implementation under their own grant from the United Nations Development Programme Global Environment Facility Small Grants Programme (UNDP GEF SGP).

YUS CO held their annual general meeting at Singorokai village in September. The meeting was solely facilitated by the YUS CO Executive team. The landowners discussed issues relevant to the sustainability of the landscape, reviewed the report from the UNDP GEF SGP, and voted to accept their annual operating budget for 2016.



Clockwise from top right:

Community members attending YUS Community Organization meeting in Singorokai village. Photo by TKCP.

Front row, from left: Mathew Tombe, Samun Buku; Back row, from left: Botty Kwisal, Sanangke Yape, Timmy Sowang, Fifu Kuyong, Nomis Simon. Photo by TKCP.

YUS Conservation Organization President Timmy Sowang (in front) visits a reforestation nursery near Kotet village as part of YUS CO's Kutim na Plantim project. Photo by Trevor Holbrook, TKCP.

The YUS Conservation Organization is implementing a community-led reforestation project with funding from UNDP GEF SGP. Photo by TKCP.

Children and youth performed sing-sings and drama skits during YUS Environment Day celebrations. Photo by TKCP.



In addition to the YUS CO Annual General Meeting and Executive Meetings, the organization and members led celebrations to mark World Environment Day, locally re-named as YUS Environment Day, on June 5th. The 2015 theme was “Lukautim bilong Tomoro” (Take Care for Tomorrow). Throughout YUS, students from 13 primary schools and 35 elementary schools participated in activities including drama skits, competitions focused on environmental stewardship, traditional dances, and community assemblies to plant trees. YUS CO produced posters and t-shirts relating to the theme to mark the occasion.

KUTIM NA PLANTIM (CUT AND PLANT) COMMUNITY CONSERVATION REFORESTATION PROJECT

YUS CO continues to implement their UNDP GEF SGP-funded project to establish regional community forest nurseries of locally and culturally important trees in an effort to reduce harvesting pressures on the protected area. In 2015, three grassroots trainings were conducted which resulted in ground-breaking for nurseries in Yopno, Som and Uruwa. YUS CO is excited to make progress on their nursery project in 2016.

Future Plans

- Establish a YUS Coffee and Cocoa Cooperative and strengthen coordination and production management among farmers
- Enhance quality control practices and improve transport logistics for conservation cocoa initiative
- Develop strategic partnerships and plans for a One Health initiative in YUS
- Create Junior Ranger Program model and begin piloting in villages in YUS
- Strengthen capacity of YUS CO to manage the YUS teacher scholarship program and UNDP GEF SGP-funded forestry project
- Conduct another Health training workshop with volunteer health team in YUS in 2016

Operating TKCP

The sustainability of the YUS Landscape ultimately belongs to the local communities and the government of Papua New Guinea. To support this, TKCP seeks to build local capacity for the long-term leadership and management of conservation efforts. The program serves as a model for community-based conservation, and our experiences are actively shared for the benefit of local institutions, partners and the conservation body of knowledge.

Learning and Sharing our Work

Community-based conservation is as much an art as it is a science; TKCP is continually learning from our own experience and that of others. In 2015, our team had many opportunities to connect with colleagues in Papua New Guinea and around the world.

In October 2015, Woodland Park Zoo hosted a Leaders' Summit for its Partners for Wildlife and Living Northwest field programs, which consists of seven international initiatives and a Pacific Northwest (USA) initiative. All eight of these efforts employ a "Living Landscape" approach to wildlife conservation. The Living Landscape approach focuses conservation actions within regional land mosaics of human use areas and protected natural areas, and connects biodiversity conservation with creating resilient, sustainable communities through science, education, capacity building and local support. During the Summit in Denver, Colorado WPZ Field Conservation Associates had the opportunity to share their experiences and solicit advice to strengthen their efforts. TKCP's Lisa Dabek, Mikal Nolan, Daniel Solomon Okena, and Trevor Holbrook shared experiences and perspectives from YUS.

Several team members traveled to Denver, Colorado, to attend the Zoos and Aquariums Committing to Conservation (ZACC) conference in October 2015. The conference included more than 300 participants representing Association of Zoos & Aquariums (AZA) institutions and field conservation programs throughout our global community. With support from the Pacific Island Countries Participation Fund (PIC Fund) managed by the New Zealand Aid Programme, TKCP's Daniel Solomon Okena attended the conference to present on the YUS Conservation Area Ranger Program and its role in building local ownership of conservation efforts. Trevor Holbrook also shared TKCP's experiences using the "Open Standards for the Practice of Conservation" in developing its program strategies and evaluation methods. Lisa Dabek facilitated a panel on "One Health – Integrating Human, Wildlife, and Environmental Health." The panel included Dr. Rob Liddell, a Woodland Park Zoo Board Member and member of the TKCP Health Team.





In PNG, ExxonMobil invited TKCP's Karau Kuna and Danny Samandingke, as well as YUS CO President Timmy Sowang, to Port Moresby to provide insights and recommendations regarding successful community engagement in conservation efforts. ExxonMobil hopes to collaborate with local communities in PNG's Southern Highlands and Hela Provinces to develop sustainable resource management practices. Kuna also visited with communities and representatives for an ExxonMobil conservation initiative in Tari, Hela Province to lend advice and recommendations for community-based conservation.

TKCP's Daniel Solomon Okena was selected as a Zoological Society of London EDGE Fellow in 2016 and 2017. The EDGE (Evolutionarily Distinct and Globally Endangered) Programme focuses on threatened species that represent a significant unique evolutionary history. As an EDGE Fellow Daniel will attend a four-week training in early 2016 and receive ongoing technical support throughout his Fellowship, during which Daniel will integrate monitoring of the EDGE species, the critically endangered long-beaked echidna (*Zaglossus bartoni*) into the YUS Conservation Area's long-term ecological monitoring program.

In June Mikal Nolan and Karau Kuna were invited to participate in a Land-use Planning workshop hosted by the Conservation and Environment Protection Authority (CEPA). Kuna delivered a presentation for the participants highlighting TKCP's LUP process, lessons learned and future plans. Kuna and Mikal also provided feedback for implementation of the new Protected Areas Policy and the potential to incorporate Land-use Planning.

TKCP Livelihoods Manager Ben Sipa presented on community engagement and sustainable resource management in the YUS Conservation Area during the Provincial Forest Review workshop at the Papua New Guinea Forest Research Institute in Lae. The event drew stakeholders to review progress against its current five-year plan and to develop strategic priorities for 2016-2020. Ben also represented TKCP during a workshop on the Assessment of Forest Management and REDD+ Governance Quality in PNG held in Port Moresby in early 2015.

During the celebrated Morobe Show in Lae in October, TKCP Healthy Community Coordinator Melanie Palili and five volunteer Peer Educators shared their work in supporting the Population-Health-Environment (PHE) program in YUS. The team spoke with the hundreds of people who visited their booth as part of the Health Expo.

Lisa Dabek shared the work of TKCP at the AZA Tree Kangaroo Species Survival Plan (TK-SSP) workshop held at Milwaukee County Zoo. To support a comprehensive approach to tree kangaroo conservation, we continue to draw the connection between the TK-SSP, tree kangaroos in zoos, and our work in Papua New Guinea.

TKCP Coordinator Trevor Holbrook joined a Symposium on the "Open Standards for the Practice of Conservation" hosted by the San Diego Zoo. Trevor shared TKCP's experiences in developing and managing the program's guiding strategies. The symposium brought a range of conservation professionals together to discuss methods, concepts, and opportunities for the continued development of the Open Standards framework.



Top to bottom:

TKCP team discussing program objectives and activities for the next year during a meeting in the Lae office. Photo by Mikal Nolan, TKCP.

ExxonMobil invited TKCP's Karau Kuna and Danny Samandingke and YUS CO President Timmy Sowang to share advice and recommendations for engaging communities in conservation efforts in Papua New Guinea. Photo by TKCP.

TKCP Administrative Assistant Laris Bartsaka (seated) facilitates a training with TKCP staff on budget planning, tracking, and financial reporting. Photo by Mikal Nolan, TKCP.



Clockwise from bottom left:

TKCP's Danny Samandingke (left) and Karau Kuna. *Photo by TKCP.*

Tree kangaroo exam with WPZ Director of Animal Health Dr. Darin Collins, Daniel Solomon Okena, and Vet Techs Jo Roach and Barbra Brush during Daniel's visit to Woodland Park Zoo. *Photo by Lisa Dabek, TKCP.*

TKCP's Lisa Dabek and Daniel Solomon Okena visiting the Washington Department of Fish and Wildlife during Daniel's visit to Seattle, Washington USA. *Photo by Harriet Allen.*

Professional and Organizational Development

TKCP's local non-governmental organization, TKCP-PNG, assumed greater responsibility in 2015 for the management and administration of the program. The organization continues to demonstrate its capacity to implement TKCP's work effectively and transparently. Laris Bartsaka, TKCP Administrative Coordinator, ensures accountability through oversight of TKCP-PNG's financial tracking and reporting, resulting in TKCP-PNG successfully completing its first independent audit. Woodland Park Zoo continues to work with TKCP-PNG to strengthen the organization's capacity for financial management and accountability. With the support of WPZ's Finance Department, TKCP Coordinator Trevor Holbrook assisted the NGO in developing and applying tools for timely financial tracking and grants management.

Trevor Holbrook visited TKCP-PNG's Lae office in April 2015 to facilitate a Monitoring and Evaluation Workshop with the leadership team. The team conducted a review and reflection of the program's key strategies and objectives, followed by the

identification of evaluation questions and indicators to measure the impact of the program's initiatives. To lead the team in the continued development of a program-level Monitoring and Evaluation Framework, TKCP has engaged the support of Evaluation Specialist Kathryn Owen. The refined framework will better enable TKCP to understand whether, and how, objectives in the YUS Landscape Plan are being met. Program evaluations provide insight into broad questions including:

- How well has the YUS Landscape Plan responded to threats and priorities?
- Have management interventions reduced or minimized threats to conservation priorities?
- Have management interventions protected and enhanced YUS Landscape values?

Evaluation findings and results inform the program's management decisions and guide the strategic direction for the YUS Conservation Area through the YUS Landscape Plan.

A MODEL FOR COMMUNITY-BASED CONSERVATION IN PNG

Under the new five-year GEF-funded project, "Strengthening Management Effectiveness of the National System of Protected Areas," the National Government of Papua New Guinea has selected TKCP and the YUS Conservation Area to serve as a model for community-based conservation in the country. With the recent restructuring of the Conservation and Environment Protection Authority (CEPA) and the release of PNG's new Protected Areas Policy, lessons and insights gained in YUS will guide the ongoing development of national policies and best practices for application throughout Papua New Guinea. Based on our model, TKCP hopes to see the creation of other gazetted Conservation Areas in the future.

TKCP-PNG BOARD OF DIRECTORS

We thank the TKCP-PNG Board of Directors for their guidance during 2015:

- Chair: Dr. Lisa Dabek (Woodland Park Zoo)
- Dr. Bruce Beehler (Smithsonian Institution)
- Mr. Francis Hurahura (Conservation Specialist, formerly of The Nature Conservancy PNG)
- Mr. Zachary Wells (Conservation International)
- Ms. Mikal Nolan, ex officio (TKCP-PNG)

Future Plans

- Continue to strengthen staff and organizational capacity of TKCP-PNG
- Continue to build the YUS Conservation Endowment
- Update and reconfirm YUS Landscape Plan for 2016-2020 to correspond with government planning cycles
- Participate in local, regional, and international conferences and workshops including the IUCN World Conservation Congress

New and Improved Website for TKCP

We are proud to share our newly re-launched website! Our new site features all-new content and an updated design. We would like to thank John Loughlin and WPZ's Communications team for their support in developing the website.

Our website contains several short videos about our work in YUS, including a new story about the development of TKCP's Junior Ranger Program during a visit from Woodland Park Zoo's Community Engagement Supervisor Eli Weiss.

Come take a look at www.treekangaroo.org

← → ↻ www.zoo.org/tkcp [DONATE NOW](#)

HOME WHO WE ARE WHAT WE DO GET INVOLVED RESOURCES WILDLIFE

TREE KANGAROO CONSERVATION PROGRAM

WOODLAND PARK ZOO • PAPUA NEW GUINEA

FROM SEATTLE TO THE FORESTS OF PAPUA NEW GUINEA

WHO WE ARE **WHAT WE DO** **GET INVOLVED**

Welcome to the Tree Kangaroo Conservation Program

The Tree Kangaroo Conservation Program works with local communities in rural Papua New Guinea to protect the endangered Matschie's tree kangaroo and the habitat in which it lives. The program helped to establish the country's first and only nationally-recognized Conservation Area, and works with communities and government to address local needs including livelihoods, health, and education. We believe that sustainable conservation needs to address not only the needs of wildlife and the environment, but the needs of the local people as well. And that in order to make a lasting difference, the change must come from within those communities themselves.

The Tree Kangaroo Conservation Program and the YUS Conservation Area serve as a national model for community-based conservation in Papua New Guinea, assisting the government in their efforts to protect the incredible diversity of wildlife and culture throughout the country.

The Tree Kangaroo Conservation Program (TKCP) is the umbrella name for the partnership between the Woodland Park Zoo's TKCP and TKCP-PNG, an independent non-governmental organization registered in Papua New Guinea.

The Tree Kangaroo Conservation Program fosters wildlife and habitat conservation and supports local community livelihoods in Papua New Guinea through global partnerships, land protection and scientific research.

For Researchers | For Students | For Media | Privacy & Terms | Publications

TREE KANGAROO CONSERVATION PROGRAM **WOODLAND PARK ZOO**

The Tree Kangaroo Conservation Program (TKCP) is the partnership between the Woodland Park Zoo's TKCP and TKCP-PNG.

TKCP-PNG is an independent non-governmental organization registered in Papua New Guinea.

© 2016 Tree Kangaroo Conservation Program / Woodland Park Zoo

TKCP in the Media

TKCP's efforts and accomplishments were highlighted in both Papua New Guinea newspapers and in media around the world in 2015.

The National Article

TKCP's "Healthy Village, Healthy Forest" initiative was featured in PNG's The National newspaper, highlighting the well-attended "Population, Health, and Environment" (PHE) workshops held throughout YUS in 2015.



AZA Connect Article

The Association of Zoos & Aquariums shared TKCP as a "Conservation Success Story" in its June 2015 AZA Connect magazine. The article recognizes the importance of partnering with local communities in achieving the sustainability of conservation efforts.



Facebook Mention

As a demonstration of the impacts made by Conservation International's Global Conservation Fund in protecting critical habitats around the globe, TKCP and the YUS Conservation Area were highlighted and shared via the Conservation International Facebook page. TKCP and Woodland Park Zoo have partnered with CI's Global Conservation Fund since 2007 to establish and maintain the YUS Conservation Endowment.



www.looppng.com

In an article featuring the launch of the five-year Global Environment Facility-funded project, “Strengthening Management Effectiveness of the National System of Protected Areas,” the online news outlet Loop Pacific (looppng.com) noted the role of the Tree Kangaroo Conservation Program and the YUS Conservation Area as a national model for Papua New Guinea as the country continues to develop its mechanisms for protecting biodiversity and the environment.

www.looppng.com/content/signing-protected-areas-project



WPZ Blog Post

The Woodland Park Zoo blog shared the story of the YUS Conservation Area Rangers, written by TKCP's Daniel Okena. Written as a compilation of the YUS Rangers' stories, the blog highlights the life of a YUS Ranger, their motivations for serving as environmental stewards, and the pride and excitement of their monthly patrols in the YUS Conservation Area.

blog.zoo.org/2015/09/the-life-of-papua-new-guinea.html



After receiving the prestigious United Nations Equator Prize at a ceremony at the Lincoln Center in New York, USA, the United Nations Development Programme office in Papua New Guinea invited the TKCP team to a celebration in Lae. The event served to recognize the value of the program and its contribution to conservation and sustainable development in PNG.



MyZoo Spring 2015 (pg. 9)

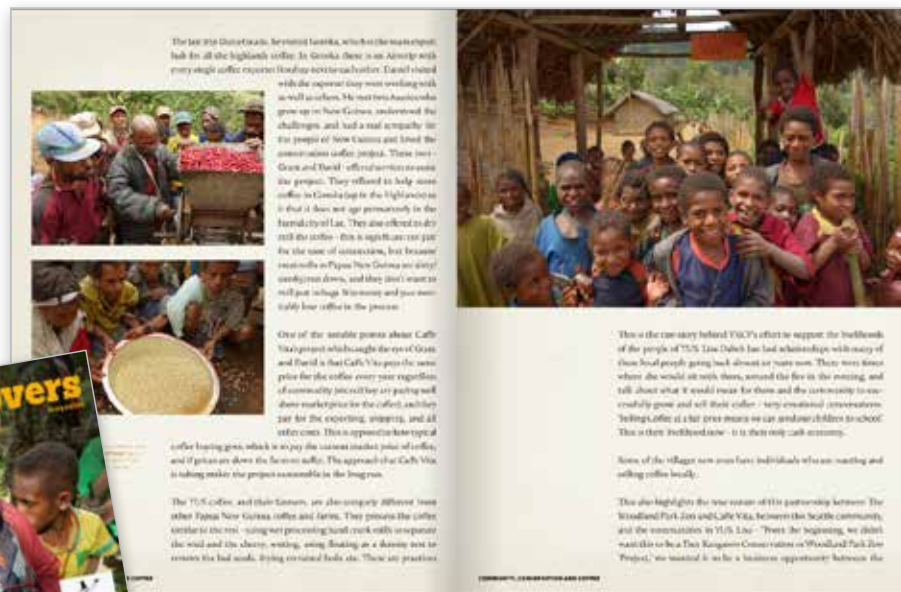
Woodland Park Zoo shared TKCP's 2014 awards of the United Nations Equator Prize and the AZA International Conservation Award with zoo members in the Spring 2015 issue of MyZoo magazine. We are proud to celebrate our successes together with WPZ's members and visitors and the Seattle community.



Coffee Lovers Magazine

Following the successful export of more than six tons of YUS Conservation Coffee to Seattle's Caffe Vita, Coffee Lovers Magazine featured a cover story on the partnership of Caffe Vita, Woodland Park Zoo, TKCP, and coffee farmers in YUS. The story highlights the challenges overcome and the benefits realized both in Seattle and in Papua New Guinea.

www.coffeeloversmag.com/tkcp-private



Photos by Ryan Pineda, WPZ

To learn more about the program, visit www.zoo.org/treekangaroo

Woodland Park Zoo's flagship conservation program, the Tree Kangaroo Conservation Program (TKCP), was prized with top honors for the International Conservation Award at the 2014 Association of Zoos & Aquariums (AZA) national conference! AZA names conservation as its highest priority, and annually recognizes exceptional efforts by AZA-accredited zoos, aquariums, and partners toward habitat preservation, species restoration, and support of biodiversity in the wild.

First established in 1996 as an endangered species research endeavor, TKCP has developed into a holistic, community-based conservation program encompassing livelihoods, education, health, and land-use planning to protect the endangered Matschie's tree kangaroo, its habitat, and other native species from the threat of deforestation and over-hunting. Five years ago, TKCP worked with local landowners and government officials to establish the Yopno-Uruwa-Som Conservation Area (YUS CA), the first of its kind in Papua New Guinea (PNG). The 180,000-acre area, voluntarily pledged by local landowners to help protect the wildlife native to PNG's Huon Peninsula, has become a model for locally-owned habitat conservation to protect wildlife in balance with community needs and aspirations.

UN EQUATOR PRIZE
TKCP has made great strides in empowering local residents to manage the community's environmental and natural resources, and recently established TKCP-PNG—a locally-registered partner non-governmental organization—to manage the YUS Conservation Area. TKCP-PNG was also recently honored by the United Nations for its advancements in sustainable wildlife conservation and local livelihood solutions with the highly-esteemed UN Equator Prize.

We're honored to be recognized for our continued contributions to wildlife conservation, tree kangaroo research, and the communities of Papua New Guinea.

Trevor Halbrook, Tree Kangaroo Conservation Program Coordinator

Support

The Tree Kangaroo Conservation Program is extremely grateful for the dedication of its long-term champions and supporters in Seattle and beyond. The extended “TKCP family” generously contributes their time, expertise, and resources in support of the YUS community, environment and wildlife. These supporters help TKCP to achieve greater impact by expanding our network and serving as advocates for global wildlife conservation.

TKCP is eager to learn about the diverse interests and passions that have motivated these supporters to join in our efforts. We had the opportunity to speak with some members of our TKCP family to hear about their inspirations and experiences as TKCP supporters.

We had never seen a tree kangaroo until we saw a Matschie’s at the Woodland Park Zoo. It was love at first sight. As we learned about this endangered species, met Lisa Dabek and heard about the Tree Kangaroo Conservation Program, we decided to donate to this visionary undertaking. We are very proud to be part of this on-going, science based, award winning and PNG community-focused conservation program. We hope it will serve as a model for future conservation projects at the Woodland Park Zoo, in Papua New Guinea, and beyond.

*Bob Plotnick and Gay Jensen, long-term supporters
of the Tree Kangaroo Conservation Program*



I support TKCP as the epitome of how to save endangered species: in exchange for protecting the tree kangaroo the villagers, their habitat guardians, receive medical care, education, self government. It’s a win-win for people and the tree kangaroo, and all thanks to one hero, Lisa Dabek. I’ve been to the Huon Peninsula, have seen the work first hand, and could not be more proud to be a small partner with her work.

*Caroline Gabel, President and CEO of Shared Earth
Foundation and long-term grantor to TKCP*



Long-term TKCP supporters Bob Plotnick and Gay Jensen in Seattle. Photo by Lisa Dabek, TKCP.
TKCP Director Lisa Dabek (left) and Caroline Gabel (right) visiting with YUS CO Executive member
Annie Ogata and daughter in Yawan village in 2010. Photo by Bruce Beehler.

TKCP depends on a growing network of people and organizations to help us accomplish our work in YUS. Many of our supporters are long-term partners and friends, and we sincerely thank you for your dedication and contributions. Together, we have achieved an incredible amount of success over the years. We sincerely thank our donors throughout the years and thank the following friends of TKCP for their financial support in 2015.

\$50,000 – \$99,999

Conservation International
Rainforest Trust
Global Environment Facility through UNDP
The Vibrant Village Foundation



\$10,000 – \$49,999

Anonymous
Merrick and Lorraine Darley
Mohamed bin Zayed Species Conservation Fund
Rotary Club of Seattle
The Shared Earth Foundation
Taronga Conservation Society Australia
Zoos Victoria



\$5,000 – \$9,999

Columbus Zoo and Aquarium
CREOI
Detroit Zoological Society
New England Biolabs Foundation
New Zealand Aid Programme
San Diego Zoo Global
Texas Instruments Foundation Matching Gifts
Margie Wetherald and Len Barson
Cyndi Wolfe



\$1,000 – \$4,999

Albuquerque BioPark
AZA Marsupial and Monotreme Taxon Advisory Group
Cleveland Zoological Society/Cleveland Zoo
Harmony Frazier and Michael Breen
Milwaukee County Zoo
Richard and Ginger Goldman
The Hoffman Family
Rob and Marti Liddell
Ruth and Terry Lipscomb
Rohrbach Family
Santa Fe College Foundation, Inc.
Sedgwick County Zoo
Toronto Zoo
ZooParc de Beauval



Up to \$999

Anonymous
Harriet Allen
Audubon Zoo
Greater Kansas City American Association of Zoo Keepers
Pascal Blumenthal
John and Sarah Brooks
Janice and William Fischel
Ben Flaumenhaft
Mary Gillmore
Carey Goedel
Ted and Tara Hart
Diane Hartjes, in honor of Riley Hartjes
Paige Lowe
Microsoft Corporation Matching Gifts
Gary Mozel
Roger Williams Park Zoo
Anne Stein
Sylvia Tompkins
Trish Watson
Yus Local Level Government





Clockwise from top left:
 Keweng-Tapmange village. Photo by Mikal Nolan, TKCP.
 Tree kangaroo. Photo by Bruce Beehler.
 YUS rain forest plant. Photo by Lisa Dabek, TKCP.
 Children playing soccer in Keweng-Tapmange village.
 Photo by Karau Kuna, TKCP.

Support: YUS Conservation Endowment

TKCP and WPZ are proud to have established the YUS Conservation Endowment with Conservation International, which provides annual funding support for the management and protection of YUS CA in perpetuity. TKCP is grateful to all of our supporters who have helped us invest over \$2 million for the creation of the YUS Conservation Endowment. We thank the WPZ Board of Directors for managing the endowment. The investment continues to grow, and since 2013 has supported 20% of TKCP's annual operating expenses in Papua New Guinea!

\$100,000 and above

Anonymous
 Conservation International
 Estate of Lorene E. Currier

Rampa Hormel, Enlyst Fund
 Carol and Bruce Hosford
 Leonard and Norma Klorfine
 Stuart Klorfine
 Klorfine Foundation

\$50,000 – \$99,999

Cammi Libby
 Jeff Libby
 George Meyer and Maria Semple
 Robert Plotnick and Gay Jensen
 John F. Swift
 Swift Family Fund
 Margie Wetherald and Len Barson

Victoria Leslie
 Trish Miner
 Richard Saada
 Sedgwick County Zoo
 Maryanne Tagney and David T. Jones
 Craig Tall
 Gail Warren

\$1,000 – \$4,999

\$20,000 – \$49,999

Blumenthal-Edsforth Family
 Columbus Zoo and Aquarium
 Nina Dabek and Peggy Shannon
 Microsoft Corporation
 Roger Williams Park Zoo
 Kevin M. Schofield
 The Shared Earth Foundation
 Susie Wyckoff

Anonymous
 John and Andrea Adams
 Adobe Systems, Inc. Matching Gifts
 Albuquerque BioPark
 Jane Alexander and Edwin Sherin
 Paul Balle
 Anthony and Lillian Bay
 Glen and Susan Beebe
 Laura Bentley
 David Brunelle
 Mark Christiansen

\$5,000 – \$19,999

Anonymous
 Paul and Sarah Balle
 Sonya and Tom Campion
 Merrick and Lorraine Darley
 Stuart N. DeSpain
 Serena and Neal Friedman
 Lynn Hall*
 Ted and Tara Hart
 Rosemarie Havranek and Nathan Myhrvold
 The Hoffmann Family

Cleveland Zoological Society/Cleveland Zoo
 Michael and Lois Craig
 Richard and Ginger Goldman
 IBM Corporation Matching Gifts
 Sugi Kana
 Glenn Kawasaki
 Rob and Marti Liddell
 Ruth and Terry Lipscomb
 Bert and Susan Loosmore
 Macbeth Family
 Milwaukee County Zoo



Daniel and Meredith Morris
 Greg Parrott
 The Reeve Family
 Patti Savoy
 Adam and Catherine Schaeffer
 Gena Shurtleff
 Gary Smith and Kathleen Kemper
 Lisa Tiedt
 Utah's Hogle Zoo
 Lauren Wyckoff
 ZooParc de Beauval

Up to \$999

Anonymous (7)
 Richard Abel and Roberta Berner
 Hannah Ahmed
 Harriet Allen
 Avery and Marcia Aten
 Robert Bailey
 Dominique Bideau
 Richard Biribauer
 Barbara Birney
 The Boeing Company Matching Gifts
 Victor Bozzo
 John and Sarah Brooks
 Mylene Brooks
 Barbara Christensen and Jeff Meyer
 Leonard and Sharon Clemeson
 Susan Cohen
 Stephan Coonrod and Cheryl Clark
 Gabriel Cronin
 Kim Daly-Crews
 Sophie Danforth
 Brian Darley
 James DeBonis

Daniel Dechert
 Patrick Dessalle
 Scott Dew and Colleen Hanlon
 Tamara DiCaprio
 Laurie Ann and C. Bert Dudley
 George and Barbara Ermentrout
 Donna and Steve Estes Antebi
 Charles and Rose Ann Finkel
 Janice and William Fischel
 Harmony Frazier and Michael Breen
 Deena Fuller
 James Galbraith
 Mary Gillmore
 Madeleine Hagen
 Edie and Brian Hall
 Susan Hall
 George and Carol Harell
 Ryan and Heather Hawk
 Nancy and Paul Hawkes
 Sheila and Earl Horowitz
 Rochelle Howe and Jonathan Greene
 Mike Kaputa and Suzanne Tomassi
 Ken Katsumoto
 Jenny Kim and Stephen Sun
 Jeanne and Jason Kinnard
 Amy Kitchener
 Yoko Kobayashi
 Nicole Labrecque
 BJ and Nayna Laird
 Jacob Langley
 Monica Lieb
 Lincoln Children's Zoo
 David and Lois Madsen
 Lindsay Malone
 Chris McFarlane and Arianne Foulks

Christine McKnight
 Gary Mozel
 Val and Laird Muraoka
 Judy Nyman-Schaaf
 Oaklawn Farm Zoo
 Darrin OBrien
 Anne Palaszewski
 Christopher Pepin and Ken Miller
 Craig Pepin
 Mimi Polk Gitlin
 Jeremy Potash
 Helen Ralph
 Helen Ramirez
 Roberta Roberts
 Rohrbach Family
 Kimberly Sanders
 Santa Fe College Foundation, Inc.
 Carol and Seymour Sarnoff
 Benjamin Schweinhart
 Ellen Scitutto
 Patricia and Scott Sebelky
 Judie and Rick Steenberg
 Anne Stein
 Laurie Stewart
 Jonathan and Tiffany Sweet
 TCS & Starquest Expeditions
 Steven Thornton and Nancy Ostrander
 UBS Financial Services Matching Gifts
 Russ White
 Kevin and Jo Wilhelm
 Mike and Jan Williams
 Ann P. Wyckoff
 Christy Wyckoff
 Stacie and Joseph Zane
 Jacob Zimmerman

* Deceased



Thanks

The Tree Kangaroo Conservation Program would like to thank all of our partners, supporters, colleagues, and friends who have contributed to the success of the Tree Kangaroo Conservation Program. Your collaboration and support make a substantial difference for the people and wildlife of YUS.

TKCP is the signature field conservation program at Woodland Park Zoo, and relies on the contributions of many departments and colleagues within the zoo. We express our gratitude to the following departments and colleagues at WPZ:

Woodland Park Zoo Board of Directors

Woodland Park Zoo outgoing President and CEO Dr. Deborah Jensen

Woodland Park Zoo's Acting President and CEO Bruce Bohmke

Woodland Park Zoo Field Conservation Department including Dr. Fred Koontz, Bobbi Miller and Dr. Robert Long

Woodland Park Zoo volunteers Courtney Baxter, Judy Nyman-Schaaf and Trish Watson

Woodland Park Zoo Finance Department including Valerie Krueger, Celeste Sabers, Nathan Ricard, Marilyn Spring and Carol Baroff

Woodland Park Zoo Development Department including Sarah Valentine, Ritee Sponsler, Paris Jones, Lorna Chin, Anne Knapp, Susan Okazaki, Laura Baumwall, Aaron Hart and Michael Friedline

Woodland Park Zoo Human Resources Department

Woodland Park Zoo Communications Department including Rebecca Whitham, John Loughlin, Ryan Hawk, Alissa Volken, Jeremy Dwyer-Lindgren, Laura Lockard, Gigi Allanic and David Schaefer

Woodland Park Zoo Animal Management Department including Deanna Ramirez, Beth Carlyle-Askew, Wendy Gardner, Dr. Jennifer Pramuk, Helen Shewman and Dr. Nancy Hawkes

Woodland Park Zoo Animal Health Department

Woodland Park Zoo Education Department including Eli Weiss, Becky Barker, Carla Bitter, Katie Remine, Jenny Mears, Scott Vance, Kathryn Owen, Kim Haas, James Blucher, WPZ's docents, and the tree kangaroo conservation cart volunteers

Woodland Park Zoo Creative Services team including Misty Fried and Kelly Hampson

Woodland Park Zoo Horticulture Department including David Selk

Woodland Park Zoo Guest Services and Events Departments

Woodland Park Zoo Security Department

TKCP also appreciates the support of our partners and friends in Papua New Guinea and across the globe. We extend a special thanks to:

PNG Conservation and Environment Protection Authority with special thanks to Minister of Environment the Honorable John Pundari, Deputy Secretary Kay Kalim, John Michael, Arthur Ganubella, Bense Thomas, James Sabi, and Madeline Lahari

Honorable Kasiga Kelly Naru, Governor of Morobe Province

Honorable Member for Kabwum District, Mr. Bob Dadae, Kabwum District Administrator Mr. David Kitenge, and Kabwum District Health Manager Mr. Boning Goniong

Morobe Provincial Government including Mr. Taikone Gwakoro, Mr. Robin Kiki, Mr. Keith Jiram, Mr. Micah Yawing

YUS Local Level Government including Yus LLG President Honorable Epemu Kiwenu, the Councillors, Magistrates, and Manager Mr. Fidel Yapenare

Wasu Local Level Government including Wasu LLG President, Mr. Petrus Yasing, the Councillors, and Magistrates

Simon Simboki, Extension Officer with Wasu LLG

YUS Conservation Organization

Singorokai Community for hosting the YUS CO General meeting, CAMC, TKCP Staff meeting, and the launch of the marine community monitoring program

Keweng community for hosting the TKCP Staff meeting and YUS Ranger meeting

YUS Teachers, Headmasters and School Board

YUS Community Health Workers and Village Birth Attendants

PNG Forest Research Institute, especially Acting Director Dr. Martin Golman, Mr. Anton Lata, and Penniel Lamei

Vice Chancellor Albert Schram, Professor Larry Orsak from the Department of Forestry, and from the Department of Distance Learning Joy Sahumlal, Paul Nongur, and Rachael Mandali at the University of Technology of Lae

Balob Teachers College for their ongoing partnership in our YUS teacher scholarship program, in particular Mr. Jerry Hendingao and Mr. Lengkepe Zongoreng

Morobe Agricultural Show Committee, especially Health Expo Coordinators Caroline Pelgen and Natasha Randall

Yopno Peer Educators for presenting their awareness-raising efforts at the Morobe Show

Georgia Kaipu of the National Research Institute (NRI)

PNG Institute for Biological Research (IBR)

The Research and Conservation Foundation (RCF) of PNG

Roy Trivedy, UNDP Resident Representative to PNG

Nik Sekhran, Joseph D'Cruz, Johan Robinson, Tamalis Akus, Christie Mahap, and Gwen Maru of UNDP

Mr. Job Opu

Wences Magun and MAKATA Inc.

Mat Wolnicki, Australian Department of Environment

Marie Stopes - PNG

The Nature Conservancy PNG

Karl Aglai, John Kabuba, and Daniel Kilagi of PNG's Coffee Industry Corporation

Cocoa Board PNG, especially Arnold Parapi and Anton Ningi

Business Coalition Against HIV/AIDS

Morobe and Madang Provincial AIDS Counsels

Queen Emma Chocolates, especially David Peate and Willie Wong

Steven Boting and the Etep Rural Hospital health team

Sister Baleb Wahazoka, Former Family Health Services Coordinator at Morobe Provincial Health Department

Dr. Jane Mogina and Laura Ann Davies, PNG LNG project, ExxonMobil

North Coast Aviation, Missionary Aviation Fellowship, and Summer Institute of Linguistics for air transport

The Leahy family

US Ambassador to Papua New Guinea Hon. Walter North and the US Embassy

Simon Passigan of Barefoot Community Services

Simon Rollinson of Pacific Island Projects

Dr. Jared Diamond

Dr. Joan Castro of PATH Philippines

Conservation International including CI-Global Conservation Fund, Russell Mittermeier, Jennifer Morris, Chris Stone, Angela Kirkman, Olivier Langrand, Janet Edmonds, and Zachary Wells

David Mitchell

KfW including Marcus Stewen and Hubertus Kraienhorst

James Cook University including Dr. Andrew Krockenberger, Gabriel Porolak, Dr. Sasha Aikhenvald, and Hannah Sarvasy

Margit Cianelli

The United Nations Development Programme and the Equator Initiative

Daniel Shewmaker and Caffé Vita

Nathan Palmer-Royston and Theo Chocolate

Greg D'Alesandre and Dandelion Chocolates

New Guinea Highlands Coffee Exports, especially Mr. Grant Jephcott and Shane Ritchie

Carl Darnell of Chinook Medical Gear

Jamie Bechtel and Karl Morrison of New Course

Jim Barborak and Ryan Finchum with the Center for Protected Area Management at Colorado State University

The Kimberley Land Council of Australia

Foundations of Success and the Conservation Measures Partnership

Jacque Blessington and the AZA Tree Kangaroo Species Survival Plan

AZA Marsupial and Monotreme Taxon Advisory Group

Harriet Allen

Doctors Rob and Marti Liddell, Blair Brooks and Nancy Philips, and Travis Austin

Mike Kaputa and Suzanne Tomassi

Susan Barkan, University of Washington

David Gillison

Jackie Delie

Marisa Howden

Henrietta Philips, TKCP archivist

Robert Plotnick and Gay Jensen

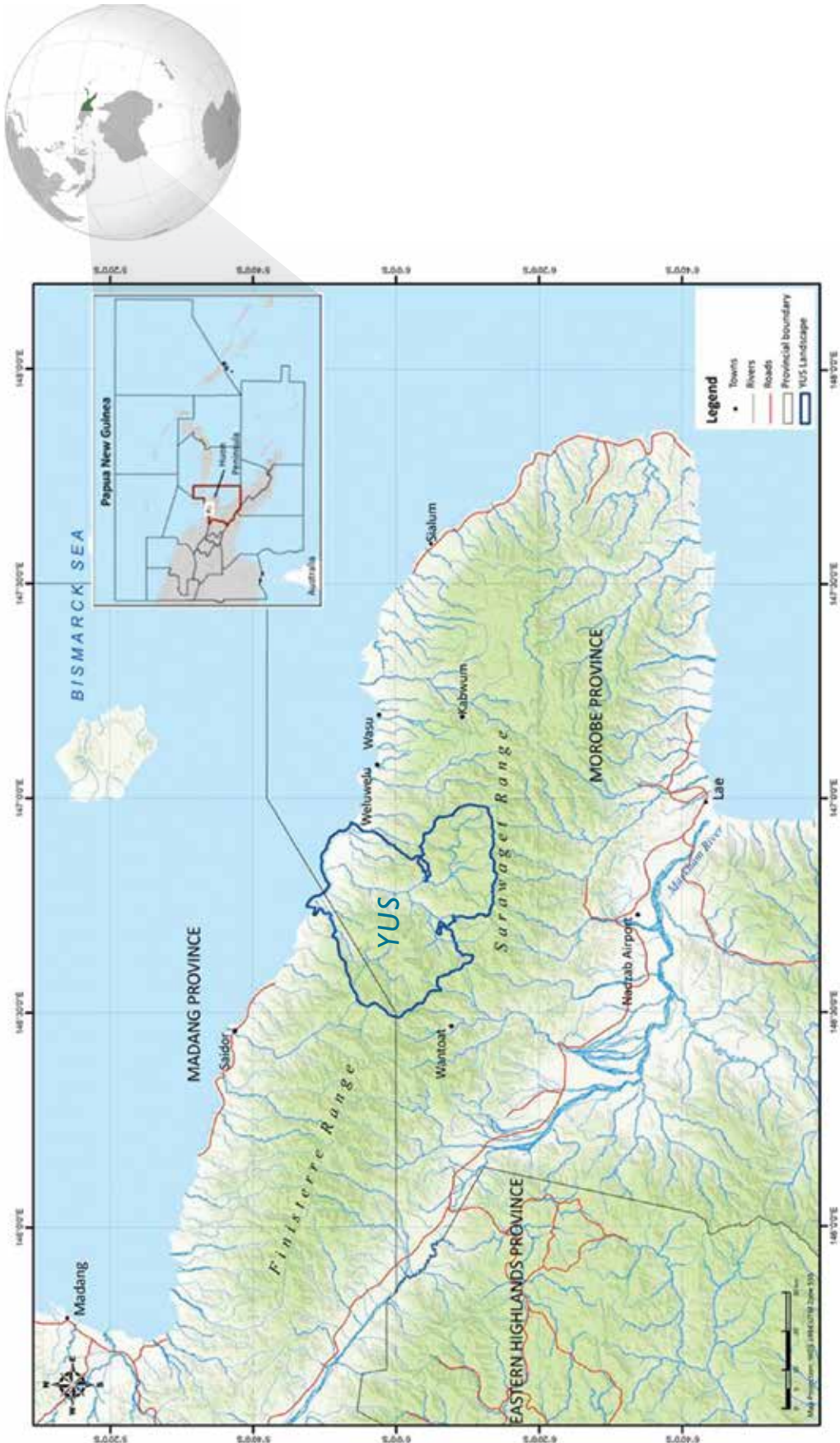
Doug Bonham for GPS transmitters

TKCP-PNG Board of Directors Dr. Lisa Dabek (WPZ), Dr. Bruce Beehler (Smithsonian Institution); Mr. Francis Hurahura (formerly with The Nature Conservancy PNG); Mr. Zachary Wells (CI); and Ms. Mikal Nolan (TKCP-PNG, ex officio)

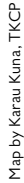
Ms. Marta Namu, part of TKCP's extended family who passed away in 2015

Most importantly, we thank the people of YUS for their unwavering commitment to serving as stewards of their environment, and for their gracious hospitality while we are visiting their villages.

Huon Peninsula, Papua New Guinea



Map by Karau Kuna, TKCP





TREE KANGAROO CONSERVATION PROGRAM



For more information and to support
our program, please contact:

UNITED STATES

Woodland Park Zoo
5500 Phinney Avenue North
Seattle, Washington 98103 USA
T: +1 (206) 548-2623
F: +1 (206) 547-6962
E: Lisa.Dabek@zoo.org

PAPUA NEW GUINEA

5th Street Professionals Building
P.O. Box 360, Lae
Morobe Province 411, PNG
T: +675-472-7226
E: Mikal.Nolan@treekangaroo.org

www.treekangaroo.org