

FORESTS FOR ALL

A campaign for Woodland Park Zoo



FOREST TRAILHEAD EXHIBIT PROGRESS REPORT

Date: June 2025

FOREST TRAILHEAD EXHIBIT

We are pleased to share this progress report on the Forest Trailhead, Woodland Park Zoo's new conservation-focused exhibit. The Forest Trailhead experience will build on our zoo's global conservation work, motivate guests to act to conserve forest habitats, and feature vulnerable and endangered animals representing forests of the world, including tree kangaroos.



Clockwise from top left: Renderings featuring the view from West Entrance; Central Plaza with tree kangaroo and red panda habitat viewing; Habitat Gallery with Community Gallery & Central Plaza above; Canopy Path approach from West Entrance

CONSTRUCTION UPDATES

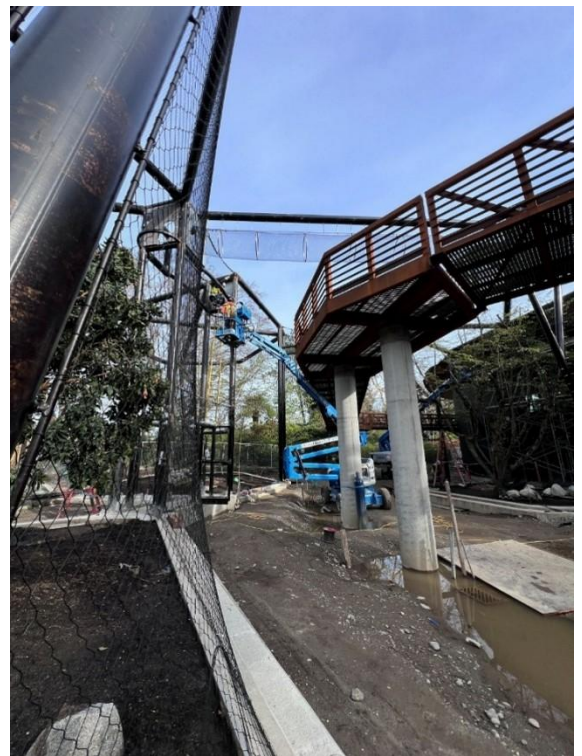


Forest Trailhead Pavilion Construction

On May 30, 2024, our general contractor Sellen Construction began construction on the Forest Trailhead exhibit. The construction crew represents nearly 90 people from 35 different trades. Sellen oversaw the installation of a tower crane in July 2024, enabling the construction team to complete large-scale operations more quickly and efficiently. Throughout the fall and winter, the crew completed the core components of the

building, including the concrete foundations, the Trailhead pavilion, mesh habitats for tree kangaroos, red pandas and kea parrots, and roof beams and panels. The exhibit will also feature multiple integrated back-of-house support spaces, which will help our keepers provide first-class care to the Forest Trailhead's animal residents. This spring, the construction team has been installing drywall and additional exhibit features such as the pedestrian pathways (including the elevated Canopy Path) and indoor Habitat Gallery which will house various species of reptiles, amphibians and fish. The mechanical, electrical and plumbing systems are also nearing completion.

With the assistance of the tower crane, the team placed or relocated significant trees within and around the exhibit space. In January, they relocated a large Parrotia tree from behind the exhibit to within one of the red panda/tree kangaroo habitats. The design team had slated the Parrotia for removal early in the process due to its location on the Forest Trailhead site, but the construction team was able to save the tree and give it a prominent space within the exhibit. The team also moved a large Arbutus Marina tree purchased from a nursery in Northern California and a shore pine donated by a local partner site into additional habitat spaces. As the trees mature, they will grow to fill the mesh enclosures, adding beauty to the space and providing shelter and enrichment for the tree kangaroos and red pandas. In addition, sub-contractor Edge Themed Environments created the artificial elements for the main habitats, including rockwork, trees, and vines, with our own Exhibits, Animal Management and Animal Welfare teams providing oversight to ensure the animals have safe and unique places to explore.



Construction of the Canopy Path and mesh habitats

The zoo has continued to explore and implement sustainable building elements throughout the exhibit where possible and is still targeting LEED Gold certification. During demolition of the previous Day and Night House exhibit (which became unusable after a fire in 2016), the construction team salvaged all the large wood beams and stored them off-site to be developed into future elements of the Forest Trailhead exhibit, such as rails or benches. Additionally, the team retained approximately 10% of the former building's concrete wall as a noise and visual barrier between the Forest Trailhead site and adjacent exhibits, which also helped reduce the impact of noise on nearby animals during construction. The main

building structure is comprised of mass plywood panels, which use 20% less wood and emit less carbon dioxide during their lifecycle than other forms of mass timber. Finally, the construction includes a 5.12 kilowatt solar array on the roof and will allow for expansion of solar capacity in the future.

The main construction remains within budget and on schedule with our project timeline and will be completed by July 2025. Upon completion of the main construction, Sellen will focus on building commissioning, which will ensure that the building's systems are operating efficiently and according to design specifications, as well as complete remaining grading and landscaping. The Forest Trailhead's animal residents will begin to arrive this fall, and our Animal Care staff will help them to acclimate within their new homes through the winter and early spring. The exhibit is projected to open to the public in May of 2026.

INTERPRETATION UPDATES

Our internal graphic design team, Creative Studio, has collaborated with principal exhibit contractor LMN and local design firm Studio Matthews, to lead the development and design of interpretive materials within the Forest Trailhead. Our overarching goal for the exhibit interpretation is to empower visitors to protect, restore and sustain forests and greenspaces in ways that are meaningful and relevant to their lives in service of healthy animals, healthy people and a climate-resilient world. In the past year, our Creative Studio team has initiated or completed key milestones, including:

- research and primary source development, such as interviews with forestry experts and Indigenous leaders engaged in zoo conservation partnerships. This work has provided perspective, expertise, and/or lived experience that will be featured in interpretive materials;
- development of an exhibit primer that defines the objectives, outcomes, themes and key messages for the exhibit; and
- creation of a style guide and templates aligned to ADA and Universal Design for Learning standards.

As guided by planning materials, we will focus interpretation in the ground floor Habitat Gallery on forest architecture, what forests provide and how people experience forests. Our messaging will emphasize the ecological, cultural, commercial, recreational and spiritual importance of forests to humans and animals. In the exhibit's second level, which will house the Central Plaza and Community Conservation Gallery, we will engage visitors in conservation stories and calls to action that inspire and empower them to help protect forests. Interactive kiosks throughout the Plaza will highlight forest-friendly actions guests can take in their own lives such as purchasing products made with sustainable palm oil, reducing junk mail and becoming greater advocates for their local greenspaces. Guests will even have the opportunity to practice making a forest-friendly choice during their visit to the self-service sustainable coffee spot, whose location within the exhibit provides a view out to the very animals protected by the shade-grown coffee farming practices utilized by the Tree Kangaroo Conservation Coffee project.

In the adjacent Community Conservation Gallery, exhibit panels will tell the stories of people around the world making a difference for forests. The focal story will be Woodland Park Zoo's Tree Kangaroo Conservation Program alongside parallel stories of communities working to protect, restore and sustain through our Red Panda Network partnership in Nepal and across communities here in the Pacific Northwest. Throughout the exhibit, visitors will encounter opportunities to explore forest habitats with multiple senses, such as listening to the calls of forest animals, touching three-dimensional map modules, and even smelling some of the goods that we rely on forests to produce, such as juniper and eucalyptus.

Our Creative Studio team is still developing interpretative signage at the animals' habitat enclosures inside and outside the building. Messaging will focus on animal wellbeing and building connections between guests and our animal residents. Given that fostering empathy for wildlife is key to our mission, signage will utilize approaches known to build empathy such as sharing animal residents' names and preferences. Other signage will describe the care our animals receive from our team of keepers and animal health experts. Art installations may accompany informational signage, providing multiple ways to engage with the exhibit's themes.



ANIMAL UPDATES

In tandem with progress made on construction and interpretation, our Animal Management team has continued the selection process for the species to be featured within the Forest Trailhead. They have proposed animal species that align with our Institutional Animal Population Plan, a zoo-wide framework for selecting animals for our collection based on their conservation significance and their ability to support key institutional strategies. In addition to the marquee red pandas, tree kangaroos and kea parrots, animal species currently proposed for the exhibit include a range of conservation-relevant species, with an emphasis on forest species threatened by habitat loss and illegal wildlife trade. Animal Management also selected animals for their high potential for visibility and activity. Examples (to be finalized) include the Chinese crocodile lizard, neon day gecko, tree monitor, Indochinese box turtle, Vietnamese mossy frog, Golden Mantella frogs and red rainbowfish.

FUNDRAISING UPDATES

The Forest Trailhead is the anchor project and final capital initiative of Woodland Park Zoo's seven-year, \$110 million Forests for All comprehensive campaign. Through the generosity of nearly 100,000 donors, the Forests for All campaign surpassed its goal on December 31, 2024, raising \$120.5 million. This effort included raising \$23.5 million for the Forest Trailhead exhibit, which, combined with the \$16.1 million received from the insurance settlement from the Day and Night House fire, fulfills the total project budget of \$39.6 million.

We are extraordinarily grateful to you for your support of the Forest Trailhead exhibit and our Forests for All campaign. Your generous contribution is ensuring that, together, we will open a new, world-class destination for our community to come together to protect forests.