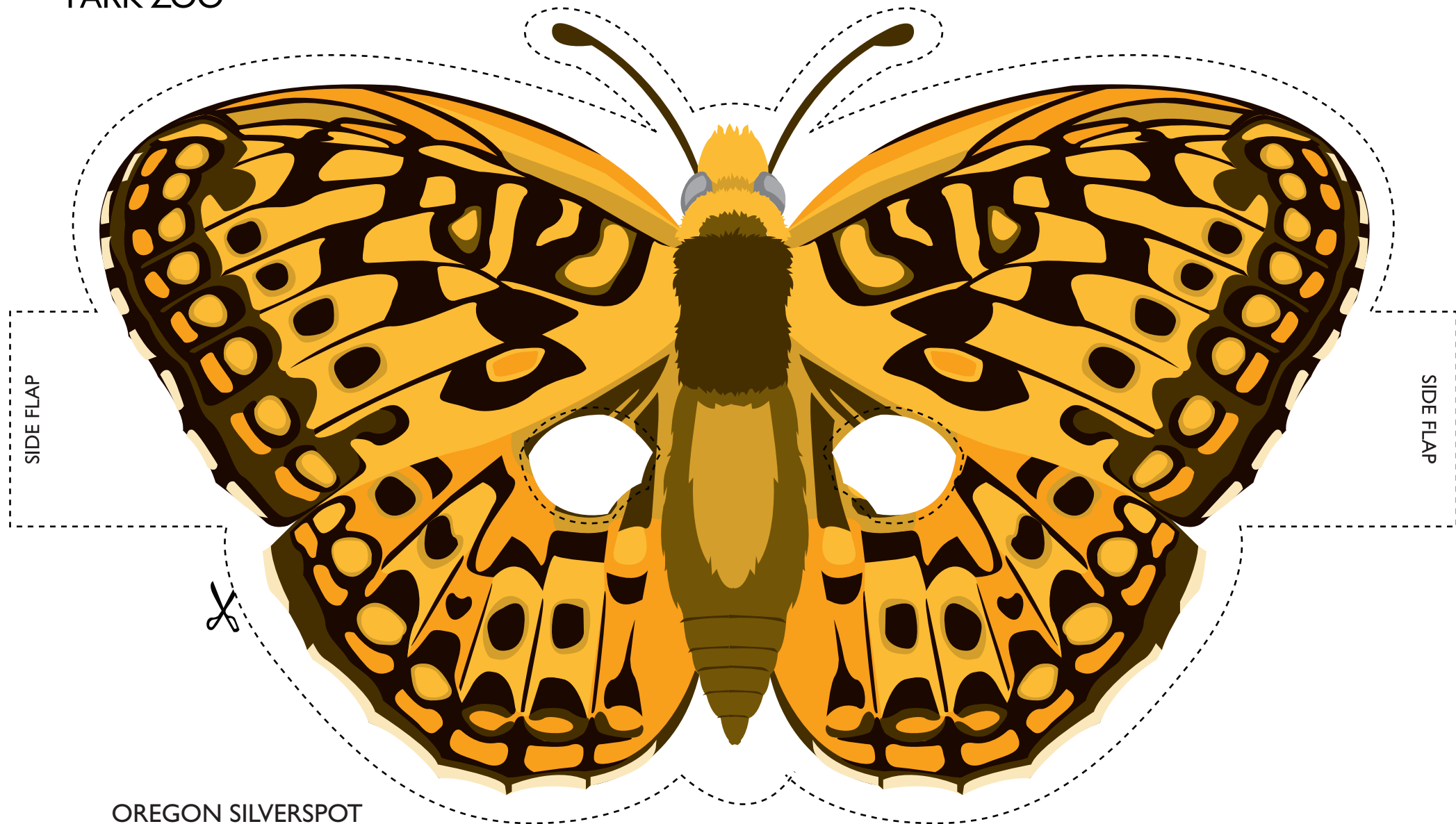




CUT AND CREATE YOUR OWN ANIMAL MASK



OREGON SILVERSPOT
BUTTERFLY



CUT AND CREATE YOUR OWN ANIMAL MASK

Directions:

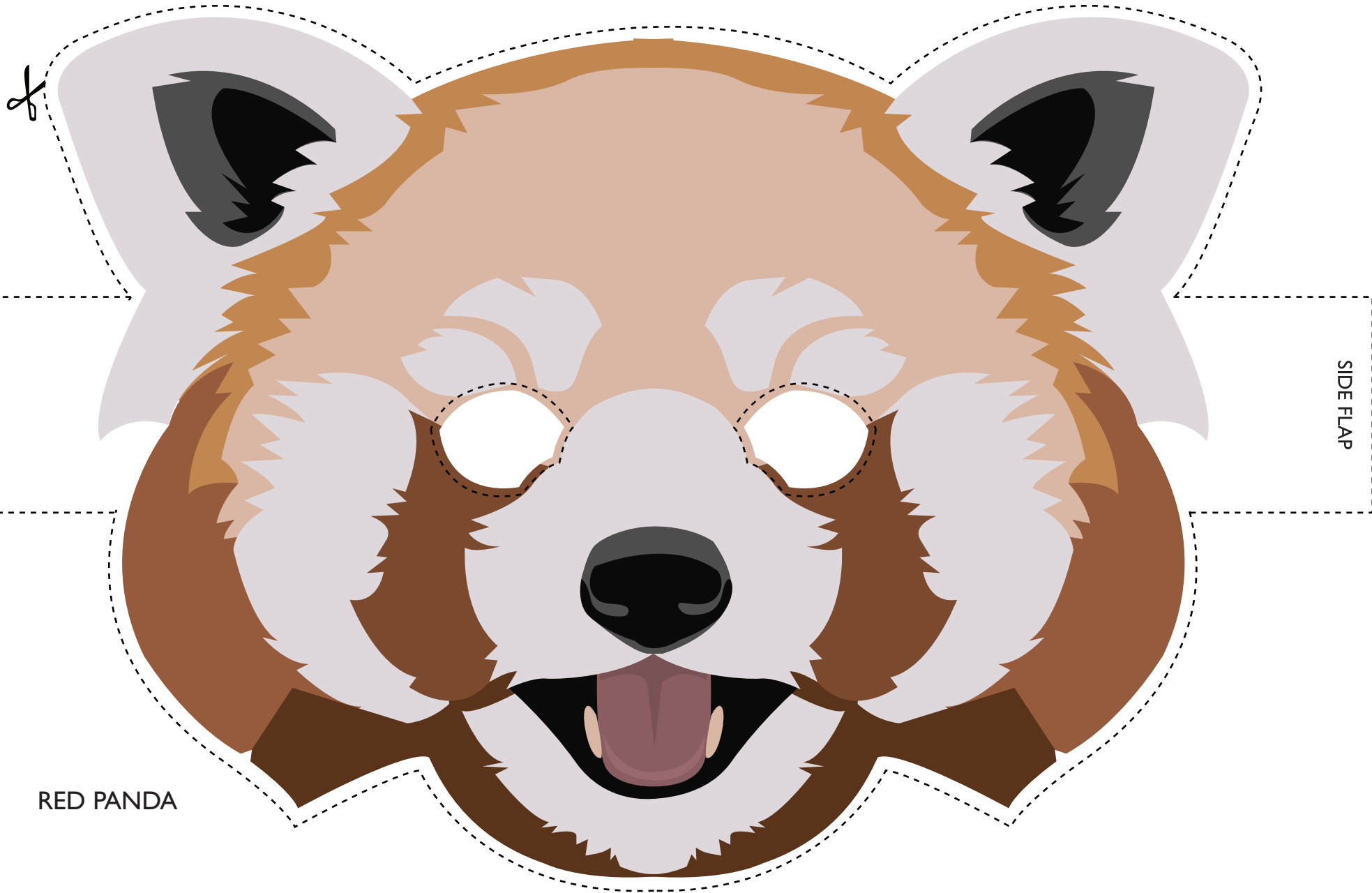
1. Print your mask and this sheet on two separate pieces of paper.
Cardstock or heavy paper works best but is not necessary.
2. Cut along the dotted lines of the mask. An adult may need to help cut out the openings for the eyes!
3. Cut out the paper strips at the bottom of this page and tape or staple one end to one of the mask's side flaps.
4. With the help of an adult, adjust the mask to the size of your head,
and connect the remaining loose flaps together with tape or staples.
5. Your mask is now complete!

You will need:
Scissors
Tape or Stapler





CUT AND CREATE YOUR OWN ANIMAL MASK



RED PANDA



CUT AND CREATE YOUR OWN ANIMAL MASK

Directions:

1. Print your mask and this sheet on two separate pieces of paper.
Cardstock or heavy paper works best but is not necessary.
2. Cut along the dotted lines of the mask. An adult may need to help cut out the openings for the eyes!
3. Cut out the paper strips at the bottom of this page and tape or staple one end to one of the mask's side flaps.
4. With the help of an adult, adjust the mask to the size of your head,
and connect the remaining loose flaps together with tape or staples.
5. Your mask is now complete!

You will need:
Scissors
Tape or Stapler





CUT AND CREATE YOUR OWN ANIMAL MASK





CUT AND CREATE YOUR OWN ANIMAL MASK

Directions:

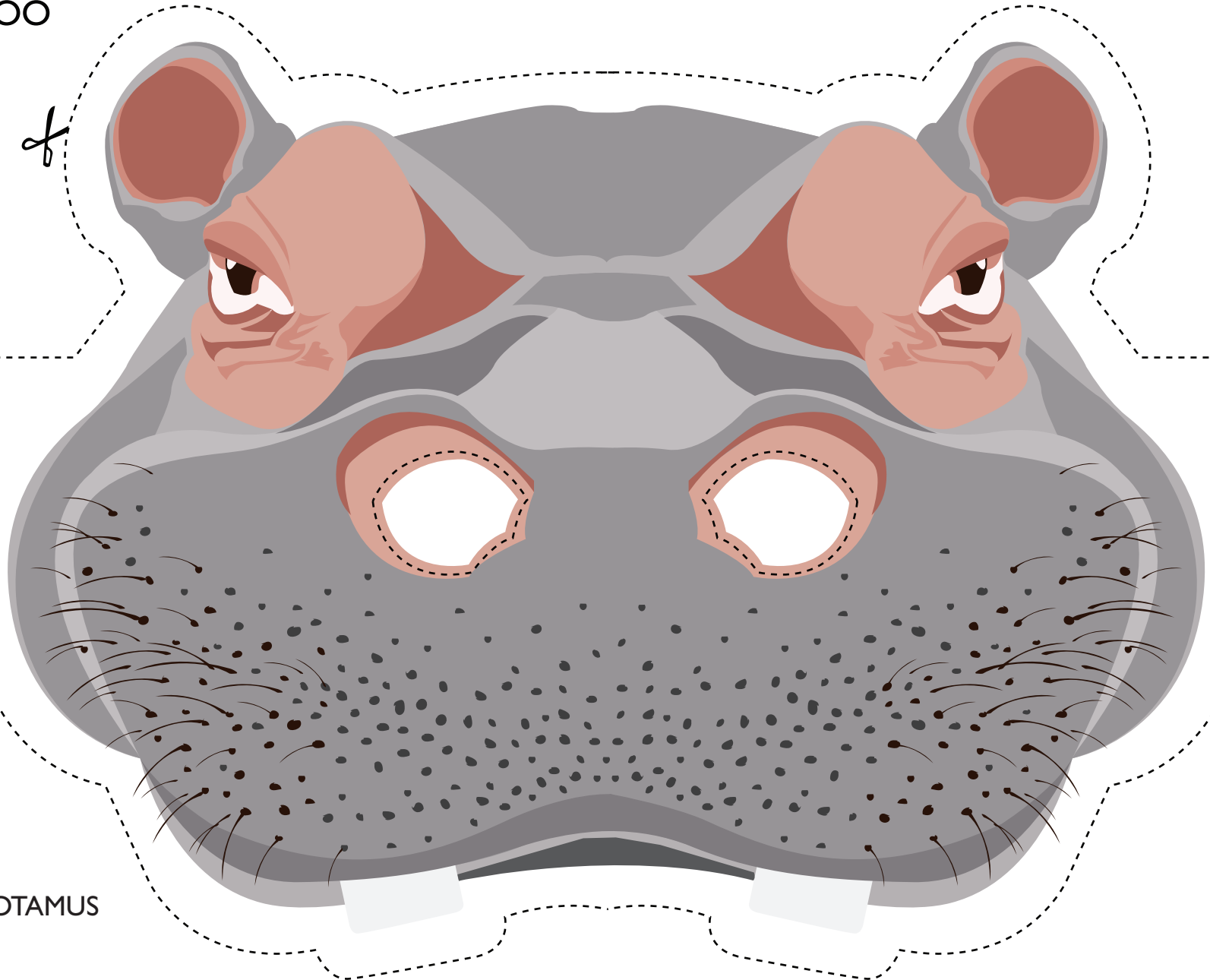
1. Print your mask and this sheet on two separate pieces of paper.
Cardstock or heavy paper works best but is not necessary.
2. Cut along the dotted lines of the mask. An adult may need to help cut out the openings for the eyes!
3. Cut out the paper strips at the bottom of this page and tape or staple one end to one of the mask's side flaps.
4. With the help of an adult, adjust the mask to the size of your head,
and connect the remaining loose flaps together with tape or staples.
5. Your mask is now complete!

You will need:
Scissors
Tape or Stapler





CUT AND CREATE YOUR OWN ANIMAL MASK



HIPPOPOTAMUS



CUT AND CREATE YOUR OWN ANIMAL MASK

Directions:

1. Print your mask and this sheet on two separate pieces of paper.
Cardstock or heavy paper works best but is not necessary.
2. Cut along the dotted lines of the mask. An adult may need to help cut out the openings for the eyes!
3. Cut out the paper strips at the bottom of this page and tape or staple one end to one of the mask's side flaps.
4. With the help of an adult, adjust the mask to the size of your head,
and connect the remaining loose flaps together with tape or staples.
5. Your mask is now complete!

You will need:
Scissors
Tape or Stapler





CUT AND CREATE YOUR OWN ANIMAL MASK



MALAYAN TIGER



CUT AND CREATE YOUR OWN ANIMAL MASK

Directions:

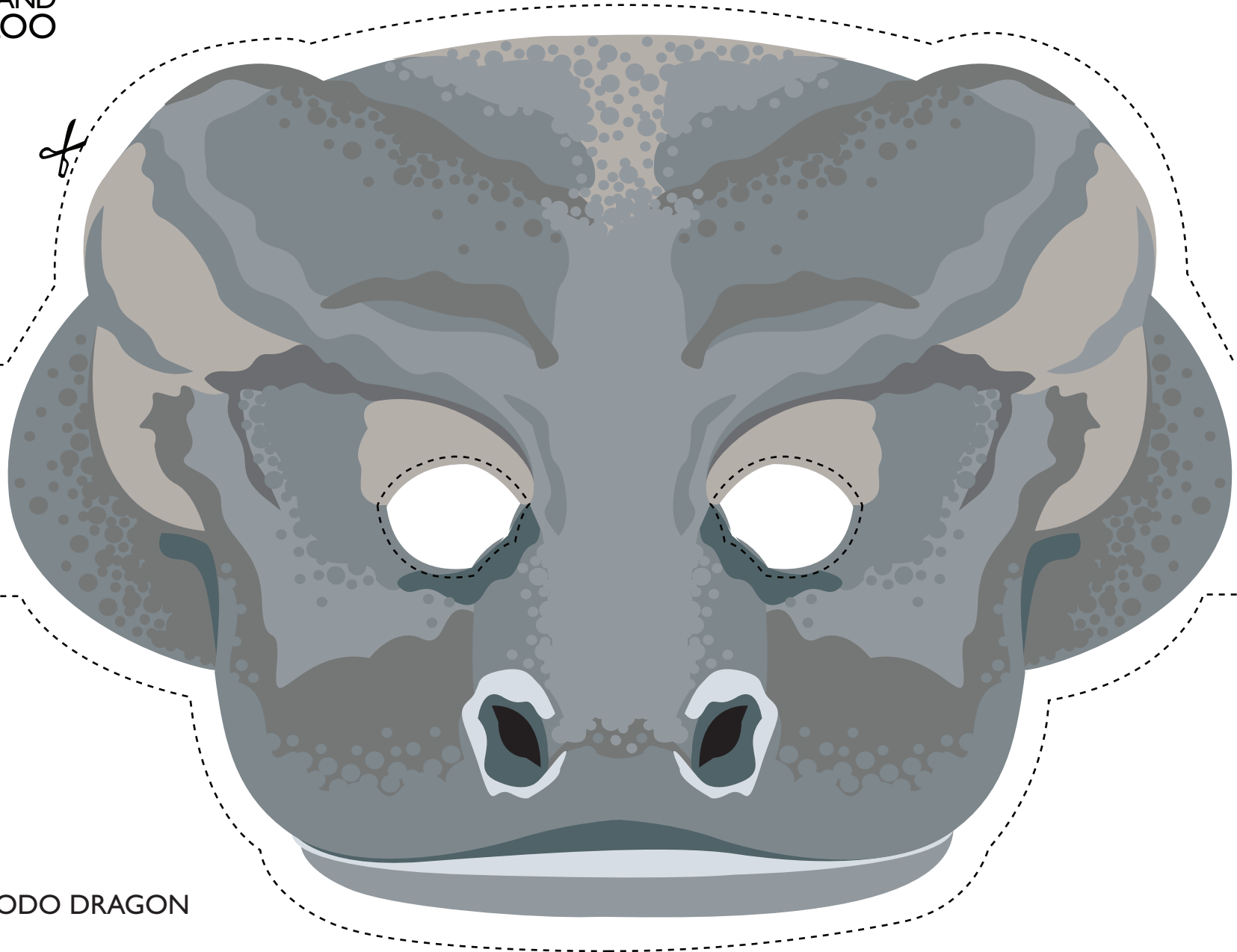
1. Print your mask and this sheet on two separate pieces of paper.
Cardstock or heavy paper works best but is not necessary.
2. Cut along the dotted lines of the mask. An adult may need to help cut out the openings for the eyes!
3. Cut out the paper strips at the bottom of this page and tape or staple one end to one of the mask's side flaps.
4. With the help of an adult, adjust the mask to the size of your head,
and connect the remaining loose flaps together with tape or staples.
5. Your mask is now complete!

You will need:
Scissors
Tape or Stapler





CUT AND CREATE YOUR OWN ANIMAL MASK



KOMODO DRAGON



CUT AND CREATE YOUR OWN ANIMAL MASK

Directions:

1. Print your mask and this sheet on two separate pieces of paper.
Cardstock or heavy paper works best but is not necessary.
2. Cut along the dotted lines of the mask. An adult may need to help cut out the openings for the eyes!
3. Cut out the paper strips at the bottom of this page and tape or staple one end to one of the mask's side flaps.
4. With the help of an adult, adjust the mask to the size of your head, and connect the remaining loose flaps together with tape or staples. Glue or tape the tongue to the front of the mouth.
5. Your mask is now complete!

You will need:
Scissors
Tape or Stapler
Glue

