



WOODLAND
PARK ZOO

Wild Wise: Ready, Set, Discover

Outdoor Exploration

WOODLAND PARK ZOO SAVES WILDLIFE AND
INSPIRES EVERYONE TO MAKE CONSERVATION
A PRIORITY IN THEIR LIVES.

ZOO.ORG

- What are amphibians?
- What is a wetland habitat?
- What is the habitat in our schoolyard?
- What animals can live in our schoolyard habitat?
- How can we learn if water is healthy for local amphibians?
- How do living things meet their needs in wetlands

What is an amphibian?



Frogs



Toads



Salamanders



Newts

Amphibian or not?



**Pacific tree frog
- amphibian**



Rough-skinned newt - amphibian



Short-horned lizard - reptile



Western toad - amphibian



Sharp-tailed snake - reptile



Northwestern salamander - amphibian

Local Amphibians



Western toad



Rough-skinned newt



Northwestern salamander



Long-toed salamander



Red-legged frog



Pacific treefrog

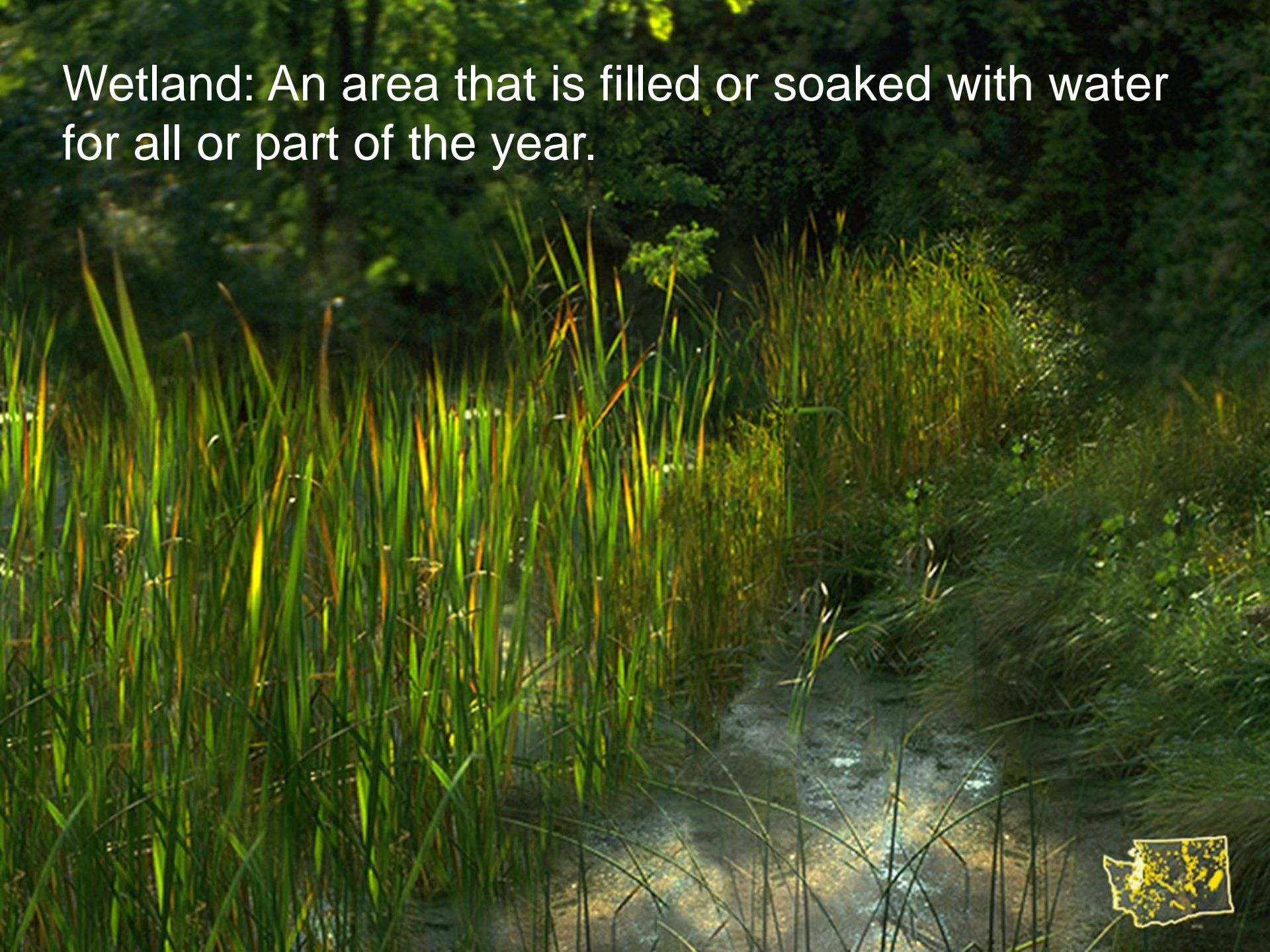


Oregon spotted frog

What is a wetland?

May also have heard of them called bogs, swamps or marshes.

Wetland: An area that is filled or soaked with water for all or part of the year.



- Plants specially adapted to wetter places (hydrophytes).
- Animals that live on land, in the water, or both.

Why are wetlands important?



- Wetlands are home to many plants and animals.
- Wetlands soak up water like sponges and help reduce flooding.
- Wetlands help filter and clean water.



Schoolyard Habitat Assessment

- Part 1: Learn about habitats and habitat features.
- Part 2: Learn about the habitat needs of a Pacific Tree Frog
- Part 3: Do a habitat survey in your schoolyard to determine if a Pacific tree frog could live here

Turn and Talk: What is a “habitat”?

Turn and Talk: What is a “habitat”?

Habitat: An animals’ home. The place where an animal finds food, water, shelter, and space.

Habitats are made of different parts called **habitat features**. Examples of habitat features that you can find in your neighborhood are...

Drainage Ditch



Stream



Sidewalk



Mulch



Garden



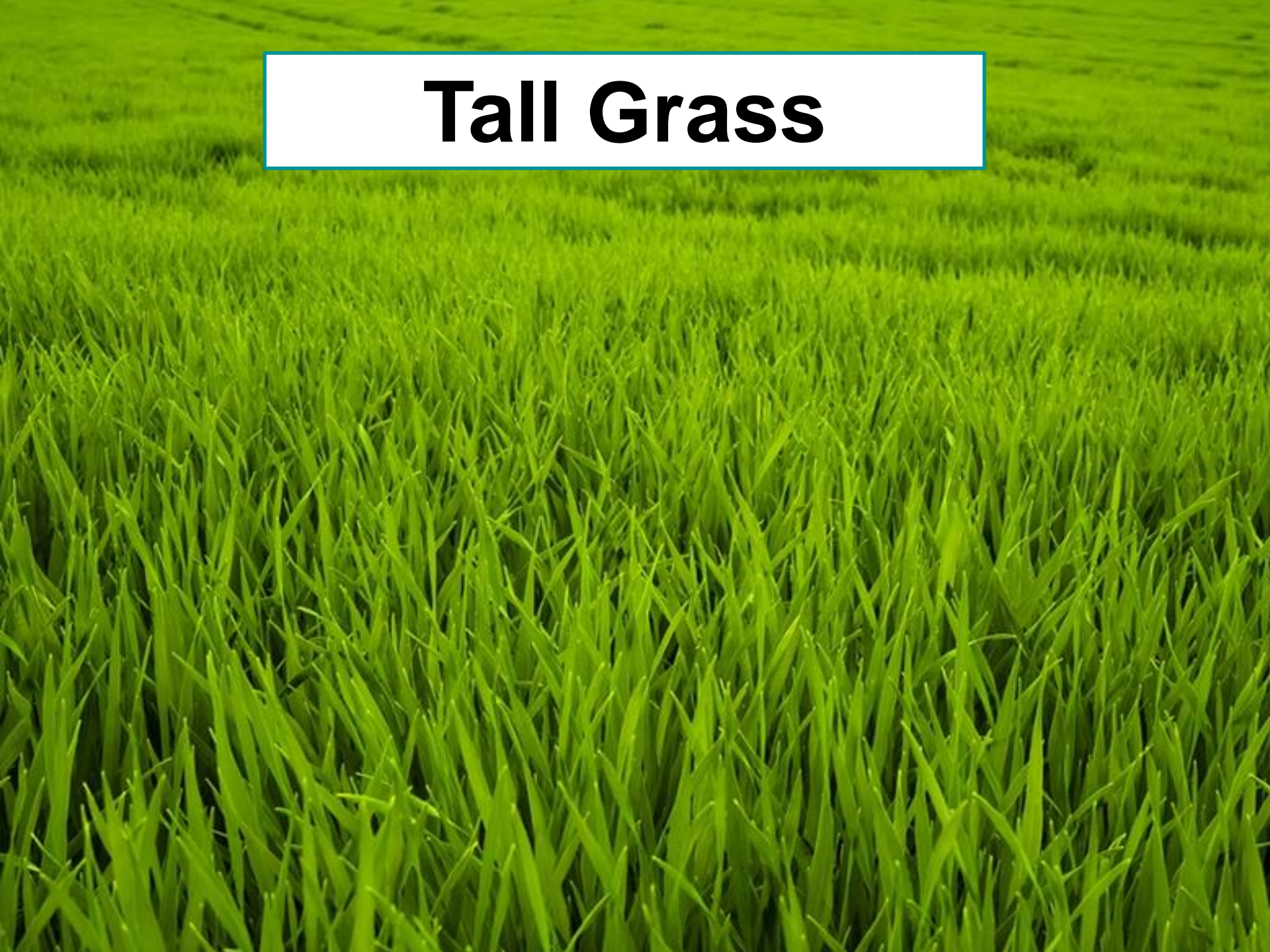
Trees



Shrubs



Tall Grass



Pile of Leaves



Curb



Rotting Logs



Puddle



- **Habitat:** An animals' home. The place where an animal finds food, water, shelter, and space.
- **Habitat Features:** Components of habitats including rotting logs, puddles, piles of leaves, lakes, streams, forests, etc.
- **Habitat assessment:** A habitat assessment is an evaluation the habitat features in your schoolyard.

Schoolyard Habitat Assessment



Before we go outside, let's get a birds eye view of our schoolyard habitat...

- What habitat features can you identify?
- Which habitat features are beneficial to Pacific tree frogs?
- What habitat features cannot be seen from this point of view?
- Does this image represent what we will see outside today?



Sentence frame:

The habitat feature that I found is _____ . The habitat feature is located _____ . Pacific tree frogs use this habitat feature for _____ .

Example:

The habitat feature that I found is a log pile. The habitat feature is located near the backdoor of the cafeteria. Pacific tree frogs use this habitat feature for finding shelter.



Images from



Pacific Tree Frog: By Geordie.birch (Own work) [CC BY-SA 4.0 (<https://creativecommons.org/licenses/by-sa/4.0>)], via Wikimedia Commons

Rough-skinned Newt: By Jsayre64 - Own work, CC BY-SA 3.0, (<https://commons.wikimedia.org/w/index.php?curid=12709492>)

Short-horned Lizard: Elizabeth Materna, USFWS

Western Toad: By Oregon Department of Fish & Wildlife - 003_western_toad_nwwd_odfw, CC BY-SA 2.0, (<https://commons.wikimedia.org/w/index.php?curid=46942231>)

Sharp-tailed snake: By Don Loarie (Sharp-tailed Snake *Contia tenuis*) [CC BY 2.0 (<http://creativecommons.org/licenses/by/2.0>)], via Wikimedia Commons

Northwestern Salamander: By The High Fin Sperm Whale (Own work) [CC BY-SA 3.0 (<https://creativecommons.org/licenses/by-sa/3.0>) or GFDL (<http://www.gnu.org/copyleft/fdl.html>)], via Wikimedia Commons

Other photos courtesy of Woodland Park Zoo