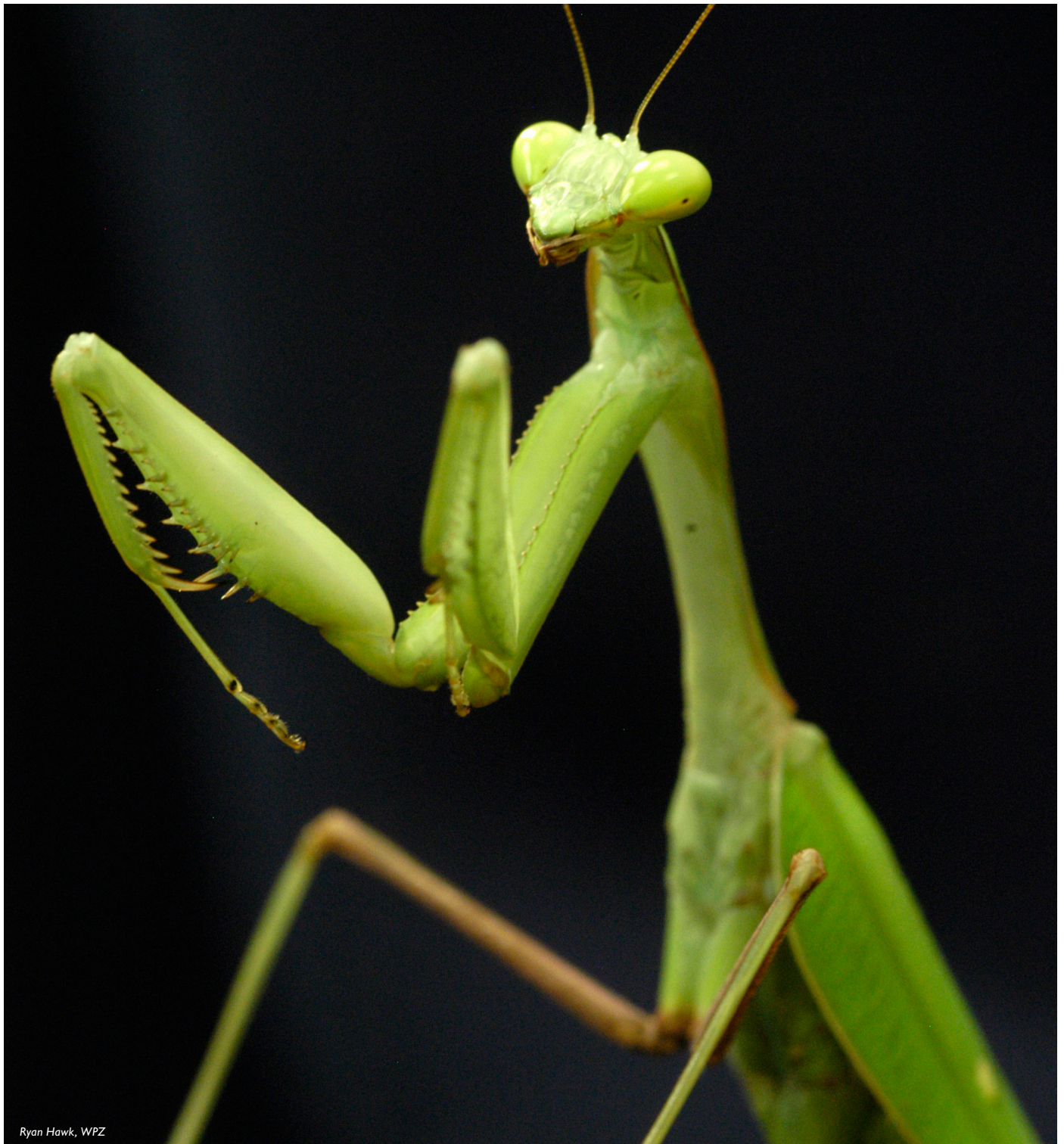




TEACHER PACKET

ARTHROPODS



Ryan Hawk, WPZ



ARTHROPODS

TEACHER PACKET

Recommended for grades K–12

TABLE OF CONTENTS

Background Information

Adaptability	3
More Than Anything Else	3
Arthropods—The Major Classes	4
Anatomy	5
The Head	5
The Thorax and Cephalothorax	6
The Abdomen	7
The Exoskeleton	8
Physiology	8
Development	10
Molting	10
Metamorphosis	10
Reproduction	11
Senses	11
Sounds	11
Hairs Used for Sensing	12
Vision and Smell	12
Fascinating Facts	13
Conservation	15
Helping at the Zoo	16
How You Can Help	16
For More Information	16
Phylum Arthropoda	17
Invertebrates	19
References	21
Bibliography	22
Activities	25
Bug World—Adventures with Arthropods: Animal Fact Sheets	51

Dear Teacher,

Arthropods, including insects, spiders and other invertebrates with jointed appendages, make up the largest and most diverse group of animals in the world. Members of this group are found in almost every corner of the earth. Although arthropods often have a bad reputation, it is generally undeserved. They are fascinating and vitally important members of the animal kingdom. Arthropods assist in pollination and they provide food for humans and other animals. Some arthropods help us by eating other arthropods we consider pest species.

This packet has been designed to help you teach your students about arthropods and the role of arthropods in the natural world. Background information about arthropods at Woodland Park Zoo, in the Pacific Northwest, and around the world has been included to assist you in planning a study unit with your students. Although this information was designed to increase your familiarity with the topic, you may choose to distribute some of the materials to older students.

The activities in this packet have been designed for use before, during and after a visit to Woodland Park Zoo for a self-guided visit focusing on arthropods. However, if you are unable to visit the zoo, the majority of the activities can also be covered in the classroom and/or outdoor settings apart from the zoo. The activities in this packet have been developed for use with different grade levels, to reach multiple disciplines and learning styles, and to tie in with Washington State Essential Academic Learning Requirements and Environmental and Sustainability Education standards.

Please see the Education section of the zoo's website (www.zoo.org) for more information or to register for a zoo visit or to schedule a zoo outreach program in your classroom.

Sincerely,

Woodland Park Zoo
Education Department

ACKNOWLEDGEMENTS

This content of this packet was developed by Katie Remine and Margaret White in Woodland Park Zoo's Education Department and Erin Sullivan in Woodland Park Zoo's Animal Management Department. Additional assistance and classroom-testing of activities in this packet were provided by Woodland Park Zoo's Teacher Advisory Council.