

Woodland Park Zoo A to Zoomazium



Woodland Park Zoo
2006 Annual Report

Woodland Park Zoo

A to Zoomazium

Just as learning the ABCs is the basic building block in a child's education, Woodland Park Zoo is working to ensure that learning about nature is a foundation in children's lives.

Life without nature would not be as interesting or fulfilling. Recent studies have discovered that as we become more urbanized, fewer children have the chance for unstructured time to discover the joys of nature. Nature exploration and play set the stage for a lifelong appreciation of animals, and a deeper understanding of the interdependence of life.

Woodland Park Zoo provides these opportunities. Our thoughtful approach to exhibits, lush horticultural displays, professional animal care and exciting educational activities combine to make the zoo a unique place where guests of all ages get to discover the wonders of animals and are inspired to act to help wildlife and wild places thrive. The zoo engages our guests to learn, care and act to protect and preserve our most valuable asset — nature.

Through the work of our staff, volunteers, Board of Directors, conservation partners and the generosity and support of our donors, Woodland Park Zoo is a valued community resource that treats our visitors to memorable moments whose impact lasts a lifetime.

From A to Z, Woodland Park Zoo provides experiences that instill appreciation for wildlife and habitat, from Alaska to Zhangaqazaly and everywhere in between.



Woodland Park Zoo Executive Leadership

Dr. Deborah B. Jensen, *President and CEO*
Bruce Bohmke, *Deputy Director*
Dr. Nancy Hawkes, *General Curator*
David Wu, *Vice President of Development*
Jim Bennett, *Director of Communications and Marketing*
Bev Clevenger, *Director of Education*
Dr. Lisa Dabek, *Director of Conservation*
Damian King, *Director of Human Resources*
Valerie Krueger, *Director of Finance*
Jodie Levey, *Director of Guest Services*

Board of Directors

Jan Hendrickson, *Chair*
Cameron Ragen, *Vice Chair/Treasurer*
Carol C. Hosford, *Secretary*
Dale R. Sperling, *Immediate Past Chair*

Board Members

Betsy Alaniz	Patty Lazarus
Linda L. Allen	Victoria Leslie
Richard W. Alvord	Bill Lewis
Stuart Ashmun	Dr. Robert Liddell
Mike Bair	Steve Liffick
Maria Barrientos	Scott Lipsky
Bruce Bentley	Dr. James McGraw
Kenneth Bunting	Mary Odermat
Kathie Claypool	John F. Oppenheimer
Janet Creighton	Robert D. Ormsby
Russ Daggatt	Valerie Parrish
Kevin Daniels	Nancy Pellegrino
Mike Doherty	Jeffrey Roe
Karen Donohue	R. Jay Tejera
Greg Duff	Julie C. Weed
DeLaine S. Emmert	Margaret Wetherald
Steven Haynes	Stuart V. Williams
Debora Horvath	Sally Wright
John Hoyt	Kenneth R. Bounds, <i>ex officio</i>
Cassandra Johnston	Deborah B. Jensen, Ph.D., <i>ex officio</i>

Association of Zoos & Aquariums Leadership

Field Conservation
Committee Chair Dr. Lisa Dabek

Studbooks

Sun Bear.....	Helen Shewman
Potto	Cheryl Frederick
Prehensile-tailed Skink.....	Mike Teller
Common Wallaroo.....	Roz Sealy
Common Trumpeter.....	Shawn Pedersen
Hornbill (<i>Aceros</i> spp.).....	Eric Kowalczyk
Laughing Kookaburra.....	Mark Myers
White-lipped Deer.....	Martin Ramirez

Taxon Advisory Groups (TAG)

Chair of the Terrestrial
Invertebrate TAG Erin Sullivan

Species Survival Plan (SSP) Coordinators

Sun Bear.....	Helen Shewman
Sloth Bear.....	Cheryl Frederick
<i>Partula</i> Snail	Ric Brewer

Population Management Plan (PMP) Coordinators

Hornbill/ <i>Aceros</i> spp.....	Eric Kowalczyk
Common Trumpeter.....	Shawn Pedersen
Laughing Kookaburra.....	Mark Myers
White-lipped Deer	Martin Ramirez



Dear Woodland Park Zoo Supporters,

Some of our most rewarding moments are the smiles we see on children's faces. Whether marveling at the size of an elephant, having a parakeet eat from the palm of their hand, or giggling as they swoop down the slide from Zoomazium's "big tree," each smile represents the wonder and pure joy of discovery the zoo provides for all children.

During 2006 we gave our more than one million visitors a broad array of experiences to enjoy and remember. Zoomazium, our innovative — and fun! — nature play space, and the long-anticipated opening of our grand, historic carousel were our two newest features. Both demonstrate the diversity of offerings the zoo provides, from pure, simple family entertainment to adventurous learning through play and discovery.

But our zoo has a greater impact than what our visitors experience on our lush 92 acres. The impact of our work is both local and global as illustrated by a few examples:

- field researchers in Central Asia working with indigenous communities to discourage poaching of snow leopards;
- our Wild Wise staff giving presentations to school children throughout the state on the wonders of Washington wildlife;
- the network of animal health professionals working globally on the threat of the avian flu to both humans and animals;
- collaborating with the indigenous people of Papua New Guinea to set aside thousands of acres of pristine forest for the endangered tree kangaroos and other species; and
- headstarting western pond turtles and releasing them back into the wild in collaboration with state wildlife agencies.

Of course, our zoo's impact would not have such an enormous reach without thousands of supporters — members, individuals, corporations, foundations, and government agencies — who gave their time, their words of encouragement and their money in 2006. In fact, 2006 brought the single largest gift we have ever received: \$6 million that will bring us closer toward a fabulous new penguin exhibit and new northwest entrance for the zoo. This gift, and thousands of others — from a \$1.00 donation for the jaguar from a kindergartner to the invaluable support from the City of Seattle — allow Woodland Park Zoo to invest in our animals, people, and the conservation partners who work daily to better the situation for endangered wildlife and habitat. We extend our deepest gratitude for your confidence in the zoo; you truly represent the level of trust and commitment our community has in the zoo's work and mission.

The next time you visit the zoo, whether it is with your children, grandchildren or alone, look around you. As a donor, you are responsible for the resources allowing this phenomenal place to grow and become what it is today. And it is you, through your continued support, that is helping, one smile at a time, to meet our mission of "...inspiring people to learn, care and act....," so our hopes for a better tomorrow are realized. Thank you and we look forward to the exciting developments in the year to come.

Sincerely,



Dr. Deborah B. Jensen
President and CEO



Jan Hendrickson
Board Chair





We were delighted to provide a home in our award-winning Northern Trail exhibit for a wayward, 7-year-old blue-phase **arctic fox** discovered as a stowaway on a garbage scow in 2004. In 2006, he received a potential mate: a white-phase, 5-year-old female from the Maryland Zoo. We're hoping the pair produces offspring in the near future.



A is for Arctic Fox



B *is for* Bear Affair

- ^ The zoo celebrated its first **Bear Affair** weekend on September 23 and 24. Working with our conservation partner, the Grizzly Bear Outreach Project, and with camping equipment donated by REI, we showed visitors what happens when campsites are not properly set up in bear country. The bears loved it and guests were treated to an important message about safety while enjoying some incredible natural bear behavior.
- > Did you know that the zoo's **Commissary**, which orders and supplies most of the food for our animals, goes through more than 3,500 bales of hay, 37,000 apples and 5.2 million mealworms and crickets each year? Supplying quality nutrition to our animals is important for their overall health and well being and, working with curators, keepers, veterinary staff and nutritional consultants, we make careful decisions about what each animal needs to thrive.



C is for Commissary



D is for Donors

- ^ The financial support of generous individuals in the community is vital to the success of the zoo. More than 3,000 individuals, foundations, and other **donors** contributed to the zoo in 2006, underscoring their faith in the zoo and our mission. Philanthropic support has led the zoo to be among the highest echelons of zoos, with numerous awards for exhibit design, animal husbandry and for our status as a top attraction for families throughout the Puget Sound region. Our donors make the zoo what it is today — and what we'll become in the future.
- > See a grizzly frolick in a pool...let Australian parrots feed right from your hand...discover the wonders of a tropical forest. These **experiences** — and many more — engage our visitors, from kids to seniors, connecting them with the magnificent power of nature. In 2006, we furthered our efforts with the opening of Zoomazium, an amazing nature play and learning space for young children. We also continued our outreach program, School-to-Zoo, supported by the Seattle Pro Parks Levy, bringing thousands of students to the zoo. A host of other programs, from early morning bird walks, Overnight Adventures, and Backyard Habitat workshops, embrace the breadth of what the zoo, and nature, have to offer.




E is for Experience





F is for Flamingo

Many remember the vibrantly colored **flamingos** that lived here at the zoo until the early 1990s. Now thanks to the generosity of local bird lovers Nick and DeEtte Johnson, flamingos will be returning to the zoo sometime in the next few years. Their donation of a flock of Chilean flamingos and funds to help with the construction of a new exhibit, are bringing these popular birds back to the zoo. Join the flock by contributing and you can help make this wonderful, colorful exhibit a reality!



Woodland Park Zoo revolutionized zoo exhibits when we opened our outdoor **gorilla** exhibit in 1979. Since that time, our successful breeding program has produced nine gorillas. This means that sometimes we must send gorillas to other zoos as a foundation for new gorilla groups and create a healthy gene pool for captive-bred gorillas. In 2006, 8-year-old Monifa, daughter of Amanda and Vip, reached sexual maturity and, through the recommendations of the Gorilla Species Survival Plan, was sent to San Francisco Zoo to meet her new mate. Accompanied by two of our keepers on her 800-mile road trip, Monifa quickly settled into her new home and will hopefully soon become a mother.

G is for Gorilla





H is for Historic Carousel

- Woodland Park Zoo has an **international impact** on wildlife conservation. Our projects protect cranes on the vast plains of Siberia, snow leopards in the mountains of Pakistan and, back here at home, headstarted western pond turtles are released into protected ponds in southwest Washington. And conservation means a variety of activities, from the educator kits we prepare, to community education in order to counteract human-elephant conflict in Sri Lanka. With 36 projects in 26 countries, the zoo's vast, global connections in its conservation initiatives are helping build a strong future for wildlife and wild places.

< This year saw the return of a classic for the kids (and adults!) of Seattle with the installation of a meticulously restored 1918-vintage Philadelphia Toboggan Company **historic carousel**. This extraordinary example of American craftsmanship was a generous donation from carousel enthusiasts Linda and Tom Allen as a gift to the children of Seattle. The zoo, with donations from many individuals, families, businesses and foundations, erected a pavilion to house this treasure which had its public debut on July 22. Fees collected from each ride go to support the zoo's educational programs, operations and animal care.



 is for International Impact




J is for Jungle Party

- ^ In its 30th year, **Jungle Party** proved to be not only the zoo's most significant fundraiser, but also the party of the year! And in 2006, Jungle Party shattered its previous record by raising more than \$1.6 million towards supporting the zoo's animal care functions, educational programs and conservation initiatives. We thank the many individuals who purchased fabulous auction items, merchants and contributors who donated money and auction items, our many generous sponsors including presenting sponsor Bank of America, and our auction Co-chairs, Patty and Jonathan Lazarus. And don't forget — Jungle Party 2007 is coming up July 13!
- > With only about 5,000 of these unique alpine parrots left in the mountainous wilds of New Zealand, we were pleased when our pair of **keas** hatched two offspring, a male and female, in late March. Listed with the World Conservation Union as a vulnerable species, wild keas are at risk due to destruction of their mountain forests from logging and other activities. Many parrot species are threatened due to the illegal pet trade and habitat destruction which is why Willawong Station, our Australian parrot exhibit opened in 2005, gives visitors an opportunity to hand-feed small parrots, and provides important conservation tips for helping wild birds.



K is for Kea



Although the old saying that a **lion** is King of the Jungle is technically incorrect, these animals are at the top of the food chain. Lions live in groups called prides consisting of 20 or more individuals. The females, usually related to one another, are group members for life. Males remain with a pride only as long as they are strong enough to defend the group.

In 2006, we set about to create an improved experience in our award-winning African Savanna exhibit, scheduled to debut in May 2007. With additional giraffes and zebras, new animals including ostriches, new interpretive elements and signage, and the expansion of the Maasai first-person interpreters presentations, we are introducing a comprehensive program that promotes a deeper understanding and appreciation of life on the savanna.

L is for Lion





M is for Mountain Goat



N is for Nature Exchange

- < You're enjoying walking through the zoo's Northern Trail exhibit when, out of the corner of your eye you see a flash of white and suddenly a stately **mountain goat** leaps to the top of a basalt pillar. The goat's Northern Trail home, opened in 1994, is just one of six exhibits that have won awards from the Association of Zoos & Aquariums: African Savanna (1981); Elephant Forest (1990); Tropical Rain Forest (1993); Trail of Vines (1997); and Jaguar Cove (2005). These honors are a proud testament to the care and knowledge that go into creating exhibits that benefit their animal residents and the appreciation of zoo visitors.
- ^ We can all remember that moment of discovery as a youngster when we spied a beautiful rock or sat for hours watching ants marching on their quest for food. **Nature Exchange**, housed within Zoomazium, capitalizes on children's innate curiosity about nature and animals by encouraging them to bring in natural artifacts or keep a nature journal, meet with Nature Exchange staff, and learn more about what they've found. With more than 5,300 kids (and a few adults!) registered as nature "traders," Nature Exchange has proven a popular venue to learn more about nature.



- < Woodland Park Zoo is an excellent venue to nurture the connection between young and old and the **Owl Society** was created to celebrate this link. The brainchild of former Board member Janet Creighton and her husband Jack, the Owl Society held its annual Grandkids' Day at the Zoo on November 5, fostering the important connection that the zoo has with children and the indelible imprint that grandparents have on the generations to come.
- ✓ The end of 2006 brought a spectacular gift to the zoo: a generous \$6 million contribution by an anonymous donor. These funds — part of a \$12 million goal — will be directed toward a new **penguin** exhibit and an inviting new West Entrance for the zoo. Not only will this donation help provide a park-like new entry way into the zoo and a dynamic new exhibit for penguins, but it also demonstrates the phenomenal philanthropic support the zoo enjoys from the people of the region whose lives are impacted by our animals.



P is for Penguin



Q is for Quiet

- ^ Enter the world of the night...so begins your journey through the zoo's Night Exhibit, a fascinating **quiet** quest to discover the mysteries of nocturnal animals, from bats to slow lorises. In November 2006, this family favorite was updated with informative new graphics, new interactive elements, and a gorgeous mural by artist Rob Evans, all focused on the wonders of animals that exist in the deepest, darkest nights, their unique place in the ecosystem and their adaptations for survival.
- > Whether it's the quiet "swoosh" from an owl's wings or the 200 mph dive of a peregrine falcon, **raptors** are some of the world's most amazing and diverse hunters. The zoo's Raptor Center exhibits more than 12 species of raptors, from the tiny saw whet owl to the mighty symbol of our country, the bald eagle, and holds more than 222 raptor demonstrations for more than 30,000 visitors each year. These demonstrations not only educate visitors on the important niche that raptors fill, they also provide an awe-inspiring experience to witness the power and beauty of these incredible birds.



R is for Raptor

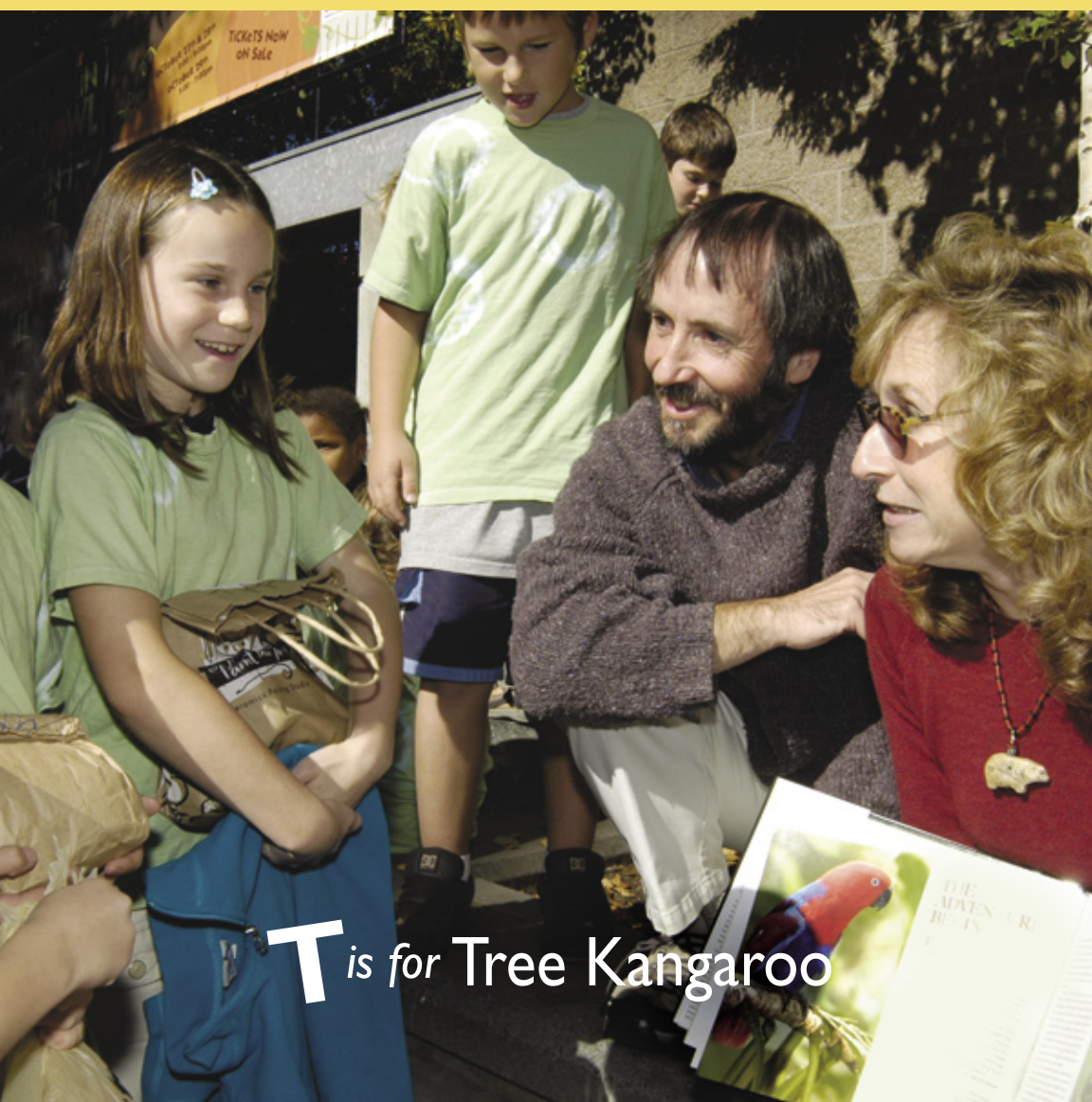
S is for Staff



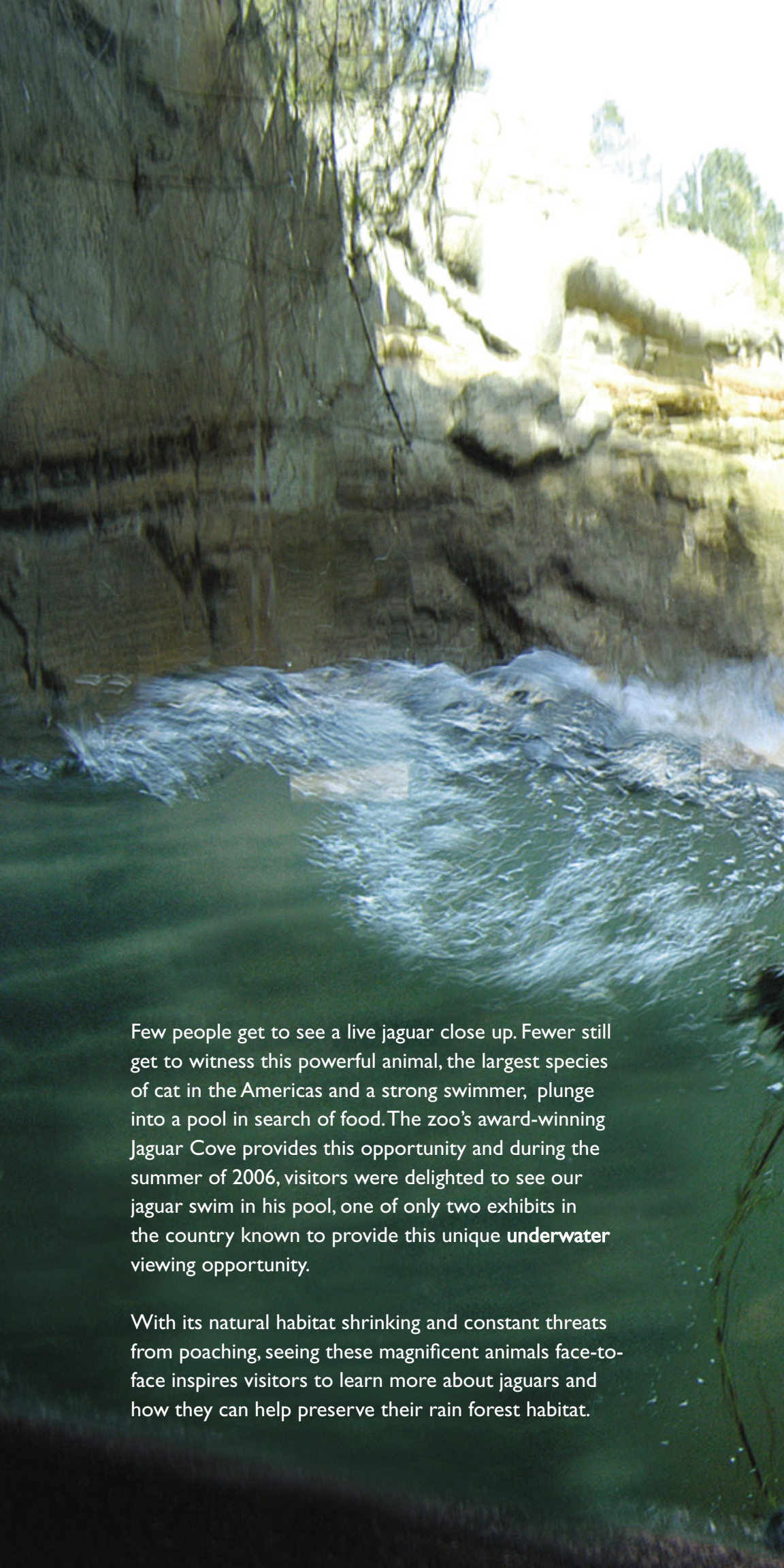
^ The quality of the zoo is based on the expertise of its people: the animal health care staff, keepers, horticulture, exhibits and grounds personnel, administration, education and conservation staff, and so many more are what make the zoo a desirable place to work. It is the professionalism and expertise of **staff** that have made us renowned for our award-winning exhibits, the outstanding care we provide our animals, the beauty and lushness of our grounds, and the comprehensiveness of our cutting-edge education programs. What's more, the skill and vision of our staff in scientific inquiry and research have created conservation programs that are effective and successful.

- ✓ **Tree kangaroos**, those odd, arboreal marsupials inhabiting the cloud forests of Papua New Guinea (PNG), got some great PR as they became the focus of a new book by New York Times-bestselling author, Sy Montgomery. Montgomery, along with photographer Nic Bishop, followed Woodland Park Zoo's Conservation Director and Tree Kangaroo Conservation Program (TKCP) founder and director Dr. Lisa Dabek on a trek into the high mountains of PNG's Huon Peninsula, home to tree kangaroos and some of the world's most spectacular wildlife.

The book, "Quest for the Tree Kangaroo," saw its national launch here in Seattle. With its stunning photography and evocative text, the book is a great way to introduce the world to the success of the TKCP and the fragile world that tree kangaroos inhabit.



Tis for Tree Kangaroo



Few people get to see a live jaguar close up. Fewer still get to witness this powerful animal, the largest species of cat in the Americas and a strong swimmer, plunge into a pool in search of food. The zoo's award-winning Jaguar Cove provides this opportunity and during the summer of 2006, visitors were delighted to see our jaguar swim in his pool, one of only two exhibits in the country known to provide this unique **underwater** viewing opportunity.

With its natural habitat shrinking and constant threats from poaching, seeing these magnificent animals face-to-face inspires visitors to learn more about jaguars and how they can help preserve their rain forest habitat.



U is for Underwater



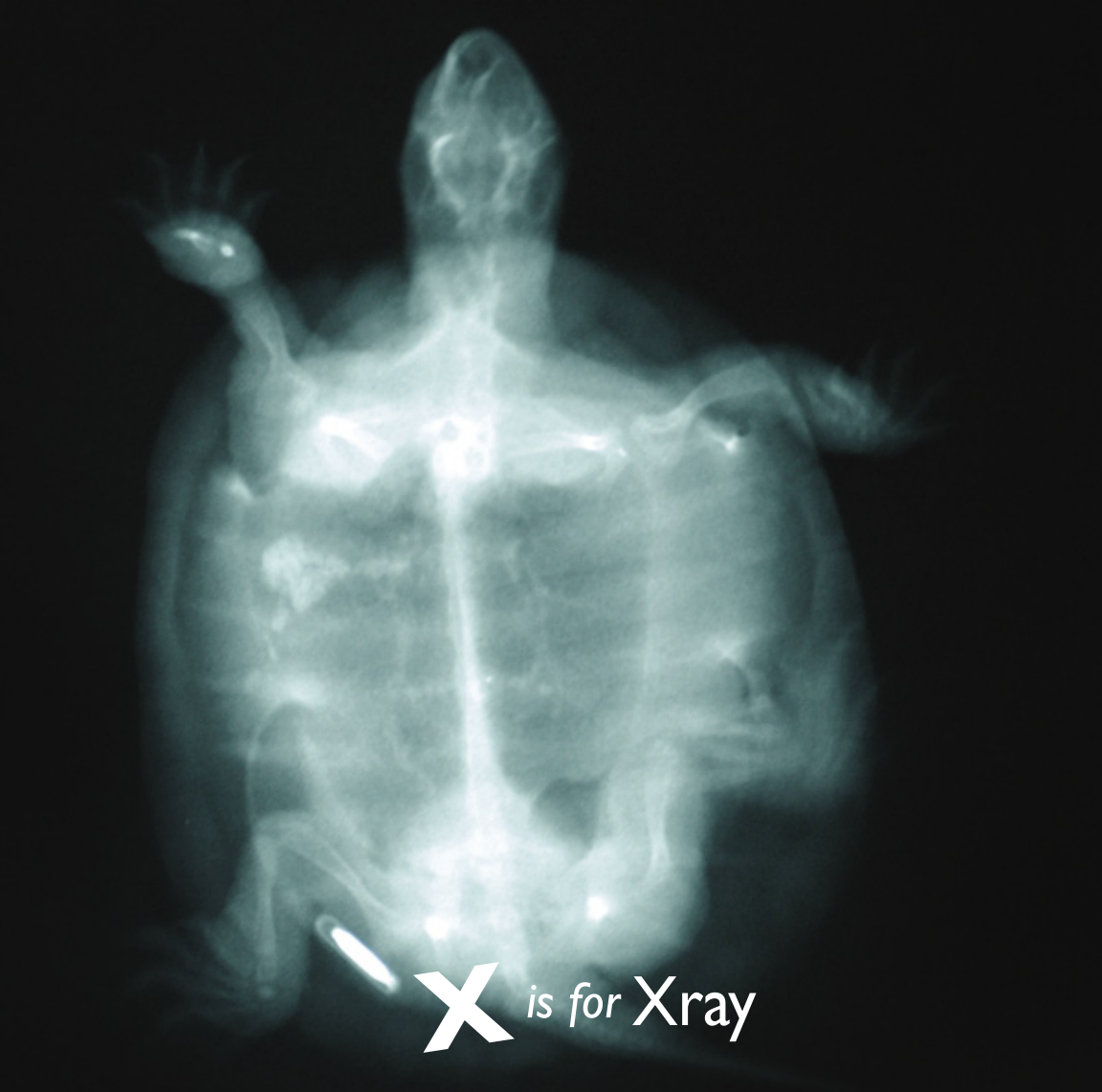
W is for Wild Dog



V is for Volunteer

^ Wow! What can we say about the 757 individuals and 12 community groups who **volunteer** their time, talent and muscle to help Woodland Park Zoo? They're fabulous! Providing everything from work in animal units to event support and educational offerings (and everything in between!), volunteers, Board members and docents contributed more than 72,000 hours to the zoo in 2006. Why do they do it? They know that every student they teach, every vegetable they slice to feed to the animals, everyone they solicit for support, and every event they work help to further the mission of the zoo. And they have fun while doing it!

< These extremely social animals have been disappearing from the African landscape due to disease, habitat destruction and misunderstanding. That's why the **Botswana African Wild Dog Project** became one of the four initial projects in our Partners for Wildlife program (the others include the Tree Kangaroo Conservation Program, the Snow Leopard Trust and Asian Crane Conservation in Siberia's Muraviovka Park). Chosen in part due to proven track records, Partners for Wildlife has provided a steady source of financial support to these projects, allowing them to further their goals and programs for continued and long-term success.



- ◁ One of the zoo's most successful wildlife conservation projects has resurrected a species once thought doomed to extinction. Since 1990, in cooperation with Washington Department of Fish and Wildlife and the Oregon Zoo, Woodland Park Zoo's Western Pond Turtle Recovery Project "head starts" hatchlings here at the zoo, raising them to be large and strong enough for release into protected ponds. But to monitor their well being, we need to track their movements and so our Animal Health team places tiny transponders in the young turtles shortly before release. These transponders (located near this turtle's hind leg in this **x-ray**) identify each turtle as an individual and many have been tracked and located for many years following their return to the wild.
- ✓ One cannot think of the zoo without thinking about the hundreds of thousands of children we delight, educate and enlighten every year. In 2006, more than 100,000 kids participated in a wealth of **youth** programs from Nature Exchange, Zoo Evening and Overnight Adventures, Wild Wise, Forest Explorers, Zoo Corps teen intern program, and...whew! so many more! While the zoo is for everyone it may be children who we impact most. The zoo is a new adventure for kids every time they visit. And with programs that bring thousands of kids to the zoo, this may be one of their few chances to experience the wonders of nature, nose-to-nose.

Y is for Youth





Z is for Zoomazium

< Plato once wrote that you can learn more about a person in an hour of play than in a year of conversation. If that's true, it's too bad he can't visit **Zoomazium!** Zoomazium, opened in May 2006, was built just for the zoo's youngest visitors to experience the joy of play while learning about nature and wildlife. Kids are increasingly alienated in the modern world from nature, a "nature deficit," and Zoomazium is bridging this gap with interactive play — along with cool programs and fascinating multimedia that stimulate the desire to learn about the natural world around them.

Since its opening, more than 350,000 people have visited Zoomazium, representing nearly half of all the visitors who come to the zoo. With continually changing programs and presentations, the award-winning Zoomazium is a fun way to learn how to help and connect with nature and wildlife!

Zoomazium Awards

Leadership in Energy and Environmental Design (LEED)
Green Building Rating System, Gold Certification and Recognition

TEA (formerly Themed Entertainment Association),
Thea Award for Outstanding Achievement: Zoo Exhibit

Northwest Construction magazine, Best of 2006 Washington,
Best Green Project





T is for Tiger

In the wee hours of Tuesday morning, December 12, a female Sumatran **tiger** cub was born at the zoo. The cub's parents, 14-year-old mother, JoJo, and 13-year-old father Rakata (RAH-ka-ta), have produced two female cubs in 2002 and two male cubs in 2004, now all located at other zoos. Due to decreased maternal care, the cub was hand-raised in our nursery, but had several visual reintroductions to her mother in the following weeks.

Every tiger birth is significant to help sustain the population in North American zoos, which continues to drop due to aging tigers, a limited number of breeding-age animals and a low birth rate. Only six tiger subspecies remain on the planet and the Sumatran is very rare, with only about 400 believed to exist in the wild.

Individual, corporate, foundation, association and institution contributions to Woodland Park Zoo are essential to creating a vibrant, progressive organization. The generosity of these **donors** enables us to provide excellence in animal care, naturalistic exhibits, quality educational programming and conservation leadership for the entire community.

Director's Circle

\$1,000,000 and above

Anonymous (1)
City of Seattle

\$500,000 - \$999,999

Anonymous (1)
Rick and Nancy Alvord

\$100,000-\$499,999

Anonymous (1)
Maria Barrientos and Ron Wright
The Boeing Company
Brown Bear Car Wash
Estate of Rick Buckley
Cole & Weber United
Conservation International
The Hugh and Jane Ferguson Foundation
Joshua Green Foundation
Carol and Bruce Hosford
Dr. and Mrs. Nicholas A. Johnson
Microsoft Corporation
M.J. Murdock Charitable Trust
Victor and Mary Odermat
WaMu

\$50,000-\$99,999

Apex Foundation
Bank of America
Jan and Jack Creighton
Leona M. Geyer Trust
Rick Buckley Memorial Golf Tournament
Estate of Elaine Green Eldridge
The Hacker Group
John C. and Karyl Kay Hughes Foundation
The Leslie Fund, Inc.
James Leslie and Jeanne Tweten
Victoria Leslie
Stephen Liffick and Rasa Raisys
Metropolitan Market
Allen and Helen Mull
Larry and Rhonda Nelsen
Mark and Vickie Nysether
Lance Odermat and Regina Bellody-Odermat
PACCAR Foundation
The Pepsi Bottling Group, Inc.
Raynier Institute & Foundation
Robert Mondavi
Estate of Jack Tilner

\$25,000 - \$49,999

Anonymous (4)
Linda and Tom Allen
ARAMARK Corporation
Howard and Lynn Behar
The Burke Family
Madeleine Hagen
HomeStreet Bank
Deborah Killinger
Kirkpatrick & Lockhart Preston Gates Ellis LLP
Jean and James Kunz
Bill Lewis
Allan and Inger Osberg
Philip J. Rasic, M.D.

Sound Community Bank
Laurie Stewart
Unico Properties LLC
Coralyn W. Whitney
Wissner-Slivka Foundation
Sally and David Wright

\$10,000-\$24,999

Chris and Diana Ackerley
Alaska Distributors, Inc.
Elias Alvord
Ellsworth and Nancy Alvord
Chap and Eve Alvord
Association of Zoos & Aquariums
Art Wolfe Photography, Inc.
Stuart and Susan Ashmun
Paul and Donna Balle
J. Daniel and Jill Becker
Ben Bridge Jeweler
Karen and David Bennett
Center for the Support of Native Lands
Mylo and Marion Charlston
ChevronTexaco
Katherine Claypool and Thomas McManus
Clise Properties, Inc.
Columbus Zoo
Conservation Food & Health Foundation, Inc.
Costco Wholesale
Jim and Diane Coughlin
Brad Davis and Kai Ichikawa
Betsy Dennis
William and Sandy Dunn
Mark and Barbette Fremmerlid
GLY Construction
Irwin and Joan Goverman
Joan Gray and Harris Hoffman
Rosemarie Havranek and Nathan Myhrvold
Mary Hogue
Debora and Robert Horvath
Douglas and Robin Howe
The International Foundation
Jaguar Land Rover Bellevue, Inc.
B. Gerald Johnson and Linda Larson
Anne S. Knapp
Frances Kwopil
Patty and Jonathan Lazarus
Lease Crutcher Lewis
Victoria Leslie
Macy's Northwest
Jeff McGraw
Mellon
Lynn Meyer
Mithun
Charles and Alex Morse
Patricia Muchmore
National Geographic Society
NBBJ West Ltd Partnership
Douglas and Nancy Norberg
Nordstrom, Inc.
Norman Archibald Charitable Foundation
Nysether Family Foundation
Eldon and Shirley Nysether
Mark and Vickie Nysether
Brad and Kathy Nysether
Brad and Kathy Nysether
John and Deanna Oppenheimer

DONOR SPOTLIGHT

A Stable Beginning Preschool

“A Stable Beginning Preschool” at Marysville United Methodist Church is incorporating environmental stewardship into their year-long curriculum.

Starting each fall, students participate in a “Good Stewardship” program by bringing their households’ empty aluminum cans to school. Parents help by taking the cans (averaging 15 pounds a week) to the local recycling center. The school saves the proceeds until spring, when the children select an animal to “adopt” through Woodland Park Zoo’s “ZooParent” program. In return, each classroom receives a picture of the animal plus details about its habitat, behavior, and status in the wild.

The program culminates in May when students take a fieldtrip to the zoo. According to Stable Beginning’s Director, Melody De Lappe, the trip has become the highlight of the year, bringing full circle the concept that kids can make a difference. And they are already having an impact. Says De Lappe, “Parents tell me that their kids pull recyclable materials out of the garbage at home and insist that they be recycled!”

2006 was the fifth year Stable Beginnings has carried out their “Good Stewardship” program. Woodland Park Zoo applauds the students, parents, and staff at Stable Beginnings for their outstanding commitment to sustainability.

John and Deanna Oppenheimer
Opus Northwest, LLC
Pacific Real Estate Partners, Inc.
Puget Sound Energy, Inc.
Cameron and Tori Ragen
Emery Rhodes
Steve Hall and Leslie Ritter
Estate of Delorez Rossell
The Saada Family
Safeco Insurance
Barbara Sando
Seattle Garden Club, Inc.
Seattle Parks Foundation
Seattle Public Utilities
Sellen Construction Company
Rhetick Sengupta
Diane and Bob Shrewsbury
Skanska USA Building, Inc.
Gary Smith and Kathleen Kemper
Burnley and Jim Snyder
Dale and Carol Sperling
St. Louis Zoological Park
Maryanne Tagney Jones and David Jones
Karyn Thale and Jim Robinson
TOPICS Entertainment
Greg and Carol James
Dave and Chris Towne
Vulcan, Inc.
Hank and Eden Waggoner
Maggie and Doug Walker
Estate of Margie Yvonne Wasson
Julie and Rogers Weed
Wells Fargo Bank
Marcia Williams
David Wu, Richard Hansen and Meredith Wu
WWW Foundation
Sheila Wyckoff-Dickey and Charles Dickey
Wyco Fund

Safari Club

\$5,000-\$9,999

Anonymous (1)
AA Party Rentals
Ancient Order of United Workmen
Evergreen Lodge No. 2
Edward and Gretchen Andrews
AVMS
Rosa Ayer
Barrett Family Foundation
Patty and Jimmy Barrier
Bartell Drugs
George and June Bartell
Gary and Brenda Beem
Eric and Gloria Bensussen
Richard Birnbaum and Pamela Okano
Jeffrey and Deborah Brennan
David Brodsky and Juliet Firmansjah
William and Judy Burdin
Caffe Appassionato Coffee Company
Sonya and Tom Campion
Philip Carlo
Art and Connie Carter
Carter Subaru
Leslie and Dale Chihuly
Al Clise
Norma Cole
Phil and Geda Condit
Nancy and Edward Cooney
John and Alison Corby
Scott Cunningham
Kevin and Mary Jean Daniels
Overton and Katharine Dennis Fund
Cheryl Dixon
Karen and John Donohue
Dreyer's Grand Ice Cream
Brian and Anne Emanuels
DeLaine and Mark Emmert
Theresa Fenton and Mark Lodge
Eric Fisk and Heather Valentine
Ed and Kathleen Fries

Katharyn Gerlich
Giant Panda Delegation
Glaser Foundation, Inc
Randy Golob and Dayna Anderson
Gerald and Carolyn Grinstein
HandlerKlein Communications & Marketing
Jan Hendrickson
Paul Hogle and Karen Malen-Hogle
Homestone Mortgage, Inc.
Cassandra and Thomas Johnston
Leslie and Charles Kellogg
James Lakin
Maffeo Family Foundation
Jermaine Magnuson
Steven Moss
Karen and Jamie Moyer
Bruce and Jeannie Nordstrom
Roger Nyhus
Robert and Lynn Ormsby
Mike and Shoshana Osterfeld
Pacific Real Estate Partners
Valerie and Jerry Parrish
James and Gaye Pigott
Robert Plotnick and Gay Jensen
Brooks and Suzanne Ragen
Andrew Reid
Riddell Williams P.S.
Peggy and Robert Rinne
William Robinson
Stephen and Esther Rotella
Seattle Center Foundation
Martin Selig
Shared Earth Foundation
Shuttle Express
Jim and Jan Sinegal
Mary and John Snyder
Elaine Spencer and Dennis Forsyth
Starbucks Coffee Company
Suncadia
Team Photogenic
Myrna and Donald Torrie
Tuttle Charitable Trust
University of Washington
Jill and Scott Walker
Robert and Andrea Watson
Howard and Victoria Wellman
Margaret Wetherald and Leonard Barson
World Association of Zoos and Aquariums

\$1,000-\$4,999

Anonymous (4)
1st Security Bank of Washington
The 5th Avenue Musical Theatre Company
A Nanny For U
AAZK Puget Sound Chapter
Ted and Danielle Ackерley
Regina and Terry Aiello
Rich and Betsy Alaniz
Trinidad Alcaraz and Amy Brandt-Alcaraz
Kenneth and Marleen Alhadeff
Catherine and Jim Allchin
Kymberley and George Allen
Daniel M. Amdur
Jack and Barb Anderson
Sue Anderson
Phoebe and Lucius Andrew
Antique Lighting Co.
Aon Consulting
Ori and Ravital Artman
Robert and Clodagh Ash
Helen E. Ashe and Beryl A. Thompson
The Myrtle L. Atkinson Foundation
Tina and Donald Axworthy
Kent and Dana Bailey
Cindy Ball and Tim Hunkapiller
Charles and Linda Barbo
Eric Barkan and Gail Bankovich
Barking Frog
The Base Shop
Deborah and Thomas Batteiger
Glen and Susan Beebe
Renee and Carl Behnke
Michael and Susan Bellan
Bellevue Rotary Club
Donna Benaroya
Larry and Sherry Benaroya

Bensussen Deutsch & Associates
Larry and Shelley Bensussen
Laura Bentley
Judy and Peter Benvenuti
Jeffrey and Lisa Berkman
Linda and George Berkman
Bernstein Global Wealth Management
Beth J. Logan, Artstuff, LTD
Margaret and John Bigelow
E.K. and Lillian F. Bishop Foundation
Erik Blachford and Maryam Mohit
David and Inez Black
Tom Black
John and Ann Blasko
Robert Blehert
Charlene and Frank Blethen
Carol Bobo
Boeing Employees' Credit Union
Deborah and Donald Bohlmann
Bruce and Mary Bohmke
Barbara Bonjour
Robert and Pamela Boustead
Michael and Rosemary Boyle
Estate of Eleanor Benz Braden
Paul and Debbi Brainerd
Bobbi and Robert Bridge
Herb and Shirley Bridge
Pamela and Edward Bridge
Gaylen Brule
Kenneth and Juliana Bunting
Melanie Burke and David Watson
Suzanne Burke
DeeAnn and David Burman
Frank Buxton and Cynthia Sears
Gary Bylund
California Community Foundation
Canandaigua Wine Company
Brad and Lesley Canfield
Paul Canniff and Nancy Nickles
Canonicus Fund
Christopher Carletti and Mitzi Carletti
Sandra and C. Kent Carlson
Jane and Peter Caron
Lorna Carroll
Jennifer and Phil Carter
Chapters Photography
Chateau Ste Michelle
Lander and Douglas Chin
Lorna and Andrew Chin
Keith Clark and Reah DePriest-Clark
Clark Nuber
The Clearman Family
Cleveland Zoological Society
Kirk Clothier
John and Marcia Cochenour
Cochran, Inc.
Sandra Cohen and Richard Struve
Robin Cole and David Stinebaugh
Columbia Hospitality, Inc.
Lance and Emily Conn
Karen Conover and Rachel Mills
Cornish College of the Arts
County of Milwaukee
David Cullen and Sandra Grimm
Russ and Gemma Daggatt
Christine Dahl
Stephanie and Christopher Daley-Watson
Lucio and Marta Dalla Gasperina
Leslie and Christopher David
Andrew Day and Kim Daley
Krijn and Judith de Jonge
Rory and Alice Dees
Inger and Jay Deutsch
Jon and Stephanie DeVaan
Catherine and William Dickson
DigitalGlobe, Inc.
Michael Doherty
Mark Doran and Tonya Dressel
Thomas Douglas and Jacalyn Cross
Chris, Viki, Sela and Evan Dragich
Dream Dinners
Gregory and Kristin Duff
Margaret and Stephen Durkee
The Dziko Family
Eaglemont Press
Kenneth and Pamela Eakes

Richard and Amy Eames
The Edgewater Hotel
ELN Communications
Joan Enticknap
Francisca Erickson
Dan and Nancy Evans
James and Gretchen Faulstich
Ellen Ferguson and Diana Sill
Mary and Jim Fernandez
Marilyn and F. Bartow Fite
Robert and Lucie Fjeldstad
Flack & Kurtz, Inc.
Donald Fleming and Elizabeth Hanna
Jean and Carolyn Fraley
Serena and Neal Friedman
Karen Fries and Richard Tait
Stephen Froud
Donald and Jennifer Furlong
Isabel and Paul Gaddis
Richard and Barrie Galanti Family Foundation
Karen Gamoran
David Garing and Peggy Hunt
Jennifer Gauger
Gehl Design, Inc.
Max Gellert
Genuine Image Photography
Janet George
Lee and Don Gill
Anne and D. Wayne Gittinger
Keith and Catherine Gleason
Joyce Golden and Erik Anderson
Brett and Vicki Goldfarb
Richard and Ginger Goldman
James and Beth Goldsmith
Rodney and Keith Goldstein
Gordon's on Blueberry Hill
John Gossman and Jacki Roberts
Robyn and Philip Grad
Grand Hyatt Seattle
Douglas Graves

Great Feast Catering
Jeff and Judith Greenstein
Bert and Barbara Gregory
Jodie and Mike Griffin
Mark and Carolyn Guidry
Marie and Brad Gunn
Michael and Mary Kay Hallman
Lenore Hanauer
Nicolas and Leslie Hanauer
Wolfgang and Lilly Handler
Renee Harbers
The Harbor Club
Katy and John Harris
Lisa Harris and David Wendel
Darcy and Kevin Hartz
Steven Haynes and Val Styrlund
Jeff Hazeltine and Alicechandra Fritz
David Henderson and Karen Anderson
Peter Heymann and Nicole Piasecki
The Hoffmann Family
Sally Hogue and Jill Padgett
Pat and Michael Holcomb
Moirra Holley
Alan and Pam Holm
Honeywell
Meagan and Matthew Howland
John Hoyt and Lisa Fitzhugh
Susanne Hubbach
Katherine Huber
Heather and James Hughes
Lyman and Gretchen Hull
Karen and Clark Hurlbut
Dinah Hutchinson
Mary and Kim Ireland
Jardin Zoologique du Quebec
Megan and Mark Jarman
Valerie and Roger Jeglum
Mark and Laura Jennings
Deborah Jensen and Steven Malloch
Linda and Theodore Johnson

DONOR SPOTLIGHT

HomeStreet Bank

HomeStreet Bank's relationship with Woodland Park Zoo began with the bank's long-time chairman, Walt Williams. Williams, who passed away in November at age 85, was a third-generation Seattleite and passionate zoo advocate.

In 2002, HomeStreet Bank and Williams' four children made a \$250,000 Capital Fund contribution to the jaguar exhibit in honor of Williams and his wife, Marie Williams. Says Kathy Williams, daughter of Walt Williams and HomeStreet Bank Senior Vice President, "I love the nurse log at the entry to the exhibit — it illustrates my hope that community investments my father began will continue to spark new growth."

HomeStreet Bank searches for creative ways to match their resources with community needs. Through their "Wild About Zoos" initiative, HomeStreet contributes \$10 to the zoo for each new bank account, mortgage, loan or insurance policy opened in King and Snohomish counties over a three-month period. Since its inception in 2002 this program has contributed \$139,220 to Woodland Park Zoo. HomeStreet is also a past sponsor of the zoo's ZooTunes concert series, and helped to underwrite this annual report.

Woodland Park Zoo looks forward to continuing our relationship with HomeStreet, planting seeds for our next stage of development.

DONOR SPOTLIGHT

Rick and Nancy Alvord Maria Barrientos and Ron Wright

Strong leadership is essential to healthy organizations, and Woodland Park Zoo is no exception. When it comes to leadership the zoo's Board of Directors plays a critical role, developing the zoo's strategic plan and helping to secure the resources necessary to maintain operations and carry out new initiatives.

In 2006 board members Rick Alvord and Maria Barrientos demonstrated outstanding leadership as Co-chairs of the Board's Development Steering Committee. The Committee's mission is to "create a culture of philanthropy that provides a sustainable and growing level of private support to enhance Woodland Park Zoo as a world-class organization."

Inspired by the vision articulated in the zoo's strategic plan, Rick and wife Nancy, along with Maria and Ron Wright, announced their intentions for a combined pledge of \$500,000 to bring about new conservation, education and animal care initiatives to the zoo. Their commitments bring the zoo's private philanthropy to a whole new level.

Thank you, Rick and Maria!

Floyd Jones
Jill Jones
Jennifer and Len Jordan
Saleh Joudeh
Kangaroo Conservation Center
Marsha and Tom Kauzlarich
Dan Kerr
Nancy Ketcham
Kenneth Kido and Alison Whitmire
Richard and Betsy Kirby
Renee and James Klein
Yelena and Igor Klimenkoff
Brian and Ginger Knox
KPFF Consulting Engineers, Inc.
Heidy Krauer and Aaron R. Coutu
Stanley and Judith Krenek
Marie D. Kruey and Steve Kruey
Hugh and Tracy LaBossier
Lake Powell Resorts & Marina
Diane and Brian Langstraat
Christopher and Alida Latham
Merrily and Anson Laytner
Shaun Leach and Julia Lowther
Barbara Lees
Tod and Tara Leiweke
Robert and Sarah Lesko
Robert Levine and Karen Bohmke
Stacey and Dan Levitan
Kathryn Lewis and Chris Nordfors
Robert and Marti Liddell
Doreen Lidgate
James and Jan Linardos
Lincoln Children's Zoo
Gregory and Corina Linden
Scott and Susan Lipsky
Edmund Littlefield and Julia Derby
Local Independent Charities of America
Ann LoGerfo and Mike Ripley
Mary Anne and Michael Lord
Bruce and Andi Lorig
Martin and Sharon Lott

Thomas and Darcy Loughran
Vesta and Everil Loyd
Susan and Jeffrey Lubetkin
Ian and Laura MacNeil
Magnusson Klemencic Associates
Majestic Bay Theatre
John E. Manders Foundation
Kathy Mares and Joseph Walter
William and Holly Marklyn
Boyd Martin and Barbara Thatcher
Kimberly and Thomas Marvin
David Matthews and Ashley Harper
Roger and Diane Mauldin
McAdams Wright Ragen, Inc.
Brooke and Jim McCurdy
Bonnie McEachern
McEachern Family Foundation
Katie McGrath
James and Janice McGraw
William McJohn
Leigh McMillan
Medtronic Foundation
Sondra Methmann-Evans and Richard Evans
Steve J. Miller Foundation
Robert and Cassandra Miller
Karen Morgan
Thomas Morgan and Beth Bryson Morgan
Mr. and Mrs. Timothy C. Motzer
Eric Mowery and Jim Boneau
Lynnette and Steven Muenzberg
Cliff and Jody Mull
Katherine and Shawn Murphy
Dale and Marjorie Myers
Nestle USA
New Mexico Biopark Society
D. Peter Newland and Robyn Johnson
Nintendo of America
Richard and Greta Noffsinger
Jeff and Phyllis Nomura
Shirley and Eldon Nysether
Billie Jo and Michael O'Brien

DONOR SPOTLIGHT

The M. J. Murdock Charitable Trust

Established in 1975 through the will of M. J. (Jack) Murdock, the M. J. Murdock Charitable Trust seeks to strengthen the Pacific Northwest's educational and cultural base. Through a rigorous application process, Woodland Park Zoo's new Zoomazium exhibit was found to meet the Trust's criteria.

Zoomazium, which opened in May 2006, features interactive Discovery Zones, live animals, audio/visual and computer technology. Once inside visitors find interactive play, Nature Exchange, animal encounters and storytelling, creatively presented to help young children learn about nature and inspire them to become better stewards of wildlife and wild spaces. Over 350,000 visitors have already experienced the exhibit since opening day.

The generous \$400,000 capital grant made in 2006 was the Trust's third investment in the zoo's education programming. Their investments have been instrumental in helping the zoo stay at the forefront of innovative educational outreach. Woodland Park Zoo is honored to have received their continuing support.

Michael and Katherine O'Brien
The Oregon Zoo Foundation
Pacific Northwest Theatre Associates
Edward and Susan Palmer
ParentMap
Lars Pardo
John F. and Betty A. Parks
Kevin and Janell Patrick
Florence Patten
Christopher and Sandi Payne
Dana Payne and Kristine Bement
Marla H. Peele
Nancy and Mark Pellegrino
Mary Pembroke Perlin and David Perlin
Jonathan and Barbara Pettit
Ursula Pfeffer
Philanthropic Ventures Foundation
Mark and Cindy Pigott
Mary Pigott and Roger Giesecke
Pittsburgh Zoo & PPG Aquarium
Michael and Wendy Popke
The Portico Group
Michelle and Mark Potvin
Kathleen Powers and Nathan Amaya
Donald and Darcy Price
Printing Control Services, Inc.
Steven and Gloria Pumphrey
Radio Disney
Carol Raitt
Ray's Boathouse Cafe and Catering
The Reeve Family
Reid Park Zoo
Restaurant Zoe
Review Foundation
Carrie Rhodes
James and Kalpana Rhodes
Gregory and Jeri Rice
Sharon and Brady Richardson
Laurence Rick and Gay Summer Rick
Bernice Rind
John and Sarah Rindlaub
George and Mary Robertson

Jeffrey and Perri Roe
Roger Williams Park Zoo
Peter and Julia Rose
Todd and Donna Rosenberg
Sabra Rossman and Mark Rossman
Tim and Linda Ruskell
Debra and Kendall Russell
Ruzivo Marimba
Salty's on Alki Beach
Michael Salzman
Marilyn Sanden
Melinda and Perry Satterlee
Peter Schaefer
David and Molly Schneider
Robert Hardwick and Linda Schoemaker
Kevin Schofield
Amy Schottenstein and Justin Magaram
Seattle Aquarium Society
Seattle Stained Glass, Inc.
Seattle Weekly
James and Marsha Seeley
Adam and Laura Selipsky
John and Kirsten Sharp
Casey and Maria Shearer
Jeanne Sheldon and Marvin Parsons
Diane Simpson
David and Catherine Skinner
Marc and Michelle Sloan
Brian and Laurel Smith
Daniel and Morgan Smith
Heather Smith and Eric Teegarden
Janet Smith
Lester and Bernice Smith
Walter and Nancee Jo Smith
Bryn Spears and Anthony Callaway
Phillip and Kelli Spencer
Sprint Nextel Corporation
Star 101.5
Morton and Luba Stenchever
Darbury Stenderu
Iola Stetson/Pine Level Foundation
Don and Mary Ann Strong

David and Linda Strout
Dean and Audrey Stupke
Paul and Linda Suzman
Anne and Tim Swetonic
Lawrence Symonds and
 Kathryn Okawa-Symonds
Audrianne Takagi
Craig and Julie Tall
Cheryl Taylor
Jay and Martha Tejera
Michael TenEyck
The Mountain 102.7
Theo Chocolate
Ian Thompson and Katie DruckerThompson
Jan Thompson
Kevin Thompson
Lynn and Mikal Thomsen
Merle Thomsen
Thomson Dinners, Inc.
Brad and Julie Thoreson
Time Warner AudioBooks
Frederick and Janice Tompkins
Toronto Zoo
Stephen and Diane Trafton
The Tree-Kangaroo and Mammal Group, Inc.
Janet and Doug True
Donald M. Tuttle
Utah's Hogle Zoo
Valley Zoological Society
Marian VanSteenvoort
Sharon Vaughn and Bruce Porter
Brendan and Millie Vierra
Marcia Wagoner and David Hewitt
Sandra Jean Wainwright
Linda and Edus Warren
Washington Trust Bank
Jane and Bill Watkins
Robert and Juanita Watt
Cynthia Wayburn
Julie Webster
Jonathan Weintraub and Susan Rose
The Westin Seattle
Lloyd and Judith Wiebe
Brandon and Stephanie Williams
Bruce Williams and Gro Buer
Melinda Williams and Mark Murray
Stuart and Lucy Williams
Frederick and Janice Tompkins
Windward Press
Robert and Carolyn Wolfe
Sandy Wood
Carol Wright
Wyman Youth Trust
Mrs. Glen B. Youell
William Zauche
Harold and Julianne Zimmerman
Daniel and Sandra Zinsmeyer
Zoo Parc de Beauval
Colleen and R. Scott Zorn
Pamela and Gerard Zytznick

Savanna

\$500-\$999

Anonymous (1)
Patricia Abbate
Cynthia Abrahamson
Aetna Foundation
Marilee and Gordon Ahalt
All America Rose Selections, Inc.
Anatomical Theatre
Jennifer and Ross Anderson
Laura and Joe Anderson
Patricia and Carlton Anderson
Lois Andrews
Melinda and Walter Andrews
Jack and Christy Arndt
Asset Management Strategies, Inc.
Attachmate
William and Nancy Bain
Valerie Baker
Douglas and Janet Baldwin
Ballard Oil Company
Julie Barbo and Mark Maghie

Jaime Bartel
Rhonda and Ryan Beams
Russell Beers and Marlene Strong-Beers
Bruce and Linda Bentley
Renee' Bergeson
The Best Of All Worlds
Margaret Binnendyk
Ann Birnbaum
Barbara Birney
Julie Blackwell Stamstad and John Stamstad
Michael and Mary Blatner
Warren and Betty Bohmke
Patty and Ron Bomba
Andrew and Brenda Bor
Elisabeth and Edgar Bottler
Kenneth and Cheri Bowles
Cindy and Scott Boyer
Henry and Ava Brandis
Cathy Breen
Brian Bruininks and Allisa Sweet
Howard and Kay Burton
Adrienne and Apolonio Buyagawan
David Byrne and Jane Jakobe
Alicia and Jeffrey Carnevali
Richard and Linda Carson
Thomas and Stephanie Casey
Cave B Inn
Stanley and Annie Cheng
Christopher of Kirkland Photography
Linda and Robert Church
Dennis and Carma Clark
Thomas and Deborah Cleveland
Clif Bar
Estate of Tooev Zinn Clifford
Clothier & Head, P.S.
Gordon and Patricia Cohen
Todd Conley
Stephan Coonrod and Cheryl Clark
Ida and Mark Cotter
Noel and Stephanie Cross
Dorothy Crossman
Crowne Plaza Hotel - Seattle
James and Barbara Crutcher
Cupcake Royale
Lorene Currier
Janet Curtis and Eva Swain
Lois and F. K. Curtis
Mark and Dianne Daines
Becky De Vries-Wong and Tim Wong
Alisa Decker
Denali Park Resorts
William and Nancy Dewey
Mike and Carol Dillon
Door Security Solutions
Mrs. Phil Duryee
John Dusenberry
Karen Duval and Cherie Duval-White
Carolyn Enloe and Andrea Wallace
Deanne and Donald Etsekson
Fischer Outdoor Discoveries, LLC
Jerry and Carol Lynn Fjellberg
Foss Maritime Company
Dr. George I. Frank
Harmony Frazier and Michael Breen
French Quarter Linens
Brent and Kim Frerichs
Pierre and Kathleen Gallant
Kathryn Gardow and David Bradlee
Michael and Lynn Garvey
Gene Juarez, Inc.
Robert and Janice Gerth
Matthew and Glenda Gertz
Getty Images Seattle, Inc.
David Goldberg and Elizabeth Storch
Vivian Goldbloom and Ana Maria Garcia
Michael and Jacquelyn Goldfarb
Melissa W. Dunn and George F. Goley IV
Golf Savings Bank
Mickey Griffith
Marian Haley and William Edwards
Jay and Sheree Halleran
Terry Halverson and Linda Cade
D. C. and Allison Harper
Lucy Hart
Ted and Tara Hart
John and Janet Harville

Carla and Hanns Hasche-Kluender
HDR Engineering, Inc.
Clair Hector and Paul Garner
Judith Hogan
Hoh River Trust
Inn at the Market
IntegraMed, Inc. /
Seattle Reproductive Medicine
Nathan Irish
Judith Jesiolowski and David Thompson
Betsy and Jeff Johnson
Matthew Uyttendaele & Elizabeth Johnson
Linda Johnson
Matt and Tien Johnson
Maurine and Ernest Johnson
Michaelene Johnson
Pamela and David Johnston
Charlotte and Corey Kalbfleisch
John and Paula Karlberg
Matthew and Sara Kellogg
Stacy and Timothy Kern
Christopher and Erika Kertson
Mr. and Mrs. Steven J. Kieburz
Steve and Rhoda Kiely
Lynn Kilbourne and William Kilbourne
Sunny Kobe Murphy and John T. Murphy
Martha Kongsgaard and Peter Goldman
Karen Koon and H. Brad Edwards
Joseph Krumbach
Jacob Langley
Kristi Larsen
Ivan and Jennie Leichtling
Ronald and Margaret Levin
Carla and Don Lewis
Howard Lewis
Lindal Cedar Homes, Inc.
Keith and Beth Loveless
Marleen and Derek Lucas
M.A. Mortenson Company
Greg and Marnie MacDiarmid

Barbara and Michael Maher
Caroline and Jeff Mason
John and Dawn Matsumoto
Tomoko and Kenji Matsuno
James and Cynthia Maxwell
Patricia Mayer and Suzanne Hull
Wayne and Vicki McCarty
Jennifer McCrary
Terry and Kathleen McLaughlin
Elena McLelland
Neil and Nancy McReynolds
Cinda McSherry and Karen Lane
Michael Rosenberg Photography
Patrice Miner and Dan Barritt
Claudia Moberg-Butler and William Butler
Ann and Frank Moe
Robert and Michelle Moore
Agnes Moran and Zachary Coss
Michael and Linda Morgan
Kevin and Nicole Morris
Dave and Stephanie Moskovitz
Mitch and Wendy Mounger
MulvannyG2 Architecture
George and Eileen Murphy
Kevin Neal
Jim Nelsen and Mary Mueeting
Kristy and Doug Nelson
Jeremy Newton-Smith and Cory Wink
Susan and Mark Nikiel
Nyhus Communications LLC
Erin and Carl Oest-Larsen
Carrie Ogden and Bonnie Larson
Michael and Dianne O'Hagen
Susan and Robert Okazaki
Thomas B. Parsons
Caroline Paulsen and Brock Grubb
PEMCO Corporation Computer Services
Patrick and Christine Pendergast
Joann Perrett and David Wilson
Councilmember Lawrence Phillips and Gail Phillips

DONOR SPOTLIGHT

Leona M. Geyer Trust

Craig Zehnder grew up in Michigan where outdoor exploration was a favorite activity. His wife Amanda, also from Michigan, loves animals and is especially fascinated with gorillas and primates. So when the two moved to Seattle in 1994, Woodland Park Zoo was a natural fit for their interests. They became members and Amanda became a zoo docent, eventually serving as president of the docent board from 1998-1999.

Since Craig became a trustee for his family's Michigan-based trust, contributions from the trust have supported the zoo's conservation and education efforts. When he learned about Zoomazium, Craig was especially enthusiastic because he worries that children today don't enjoy the same personal connection to nature he experienced. But Craig wasn't satisfied to simply send a check. "I wanted to inspire additional community support," says Craig.

Woodland Park Zoo and the Geyer Trust agreed to a matching grant. The Trust would contribute \$50,000 towards Zoomazium programming (specifically Zoo Corps) if the zoo raised \$50,000 in additional contributions by November 30, 2006. Response was overwhelming — surpassing our original goal and eventually raising over \$192,000 total!

The zoo thanks the Zehnders, the Leona M. Geyer Trust, and the donors who helped meet this challenge.

Margaret and Stan Pickering
 The Plateau Club
 Jacqueline Poole
 William Pope and Teresa Castner
 Porter's BBQ & Professional Catering
 Preferred Copier Systems
 Kelly and Christina Price
 Aimee and Paul Quiggle
 Robert and Lisa Ratliffe
 Gerald Ray
 Rebecca Douglas Photography
 Recreational Equipment, Inc.
 Miriam Reiss
 Susan and Alan Reiter
 Reliable Mailing & Fulfillment, Inc.
 Remlinger Farms
 Helen Ridean
 Raymond and Nancy Rignel
 Jonathan and Elizabeth Roberts
 Marjorie Robinson and Cathy Patrick
 Laurie and William Rockenbeck
 Dorothy Russell
 Kathryn Schaefer and Glenn Hackney
 Schroeter Goldmark & Bender
 Doug Schwab
 David Scott
 Seattle Fire Department
 Seattle Scenic Studios
 Sedgwick County Zoo
 David Shank
 Jacqueline and Gregory Sharp
 Julia P. Shaw
 Sheraton Seattle Hotel & Towers
 Alice Shreve
 Taryl and David Shupe
 George and Darcel Siepak
 Benjamin and Bobbie Smith
 Roger and Jane Smith
 Maris and Tim Sovold
 Sparling
 Spectrum Glass Co, Inc.
 Michelle Spencer
 Phyllis and Jerrold Sproat
 Starry Nights Catering & Events
 John and Sherry Stilin
 Cynthia Stroum
 Kent Sullivan and Julie Solon
 Mari and Craig Swanson
 Sweepstakes Consulting LLC
 Swenson Say Faget
 Margaret and Kelly Taber
 Mark Takagi and Connie Ricca
 Valerie Tarico and Brian Arbogast
 Christine and Kelly Taylor
 Tetra Tech/KCM, Inc.
 The Empress Hotel
 Donald and Barbara Thomson
 Three Rivers Winery
 Sylvia Tompkins
 Trofeo
 United Way of Snohomish County
 John Valaas
 Brien and Rhonda Vowinkel
 Nancy and Marty Waiss
 William Walsh and Marilyn Freeman
 Leonard and Jeanne Ware
 Todd and Ruth Warren
 Matt and Marlaine Watson
 Dawne and Jordan Weisman
 Elizabeth Welch
 Jamison and Kim West
 Charles and Christine Wickstrand
 Peter and Stephanie Wieland
 Deanne Witt
 Cheryl Woodard and James Haney
 Joseph and Janet Wozniak
 Lynn Wuscher
 Ann Wyckoff
 Susie and Paul Wyckoff
 Zoological Society of San Diego

2006 Estate Gifts

Estate of Eleanore Benz Braden
 Estate of Rick Buckley
 Estate of Elaine Green Eldridge
 Herbert Mann Designated Fund
 Estate of Delorez Rossell
 Estate of Jack Tilner
 Estate of Margie Yvonne Wasson
 Estate of Tooey Zinn Clifford

2006 Matching Gift Organizations

Adobe Systems, Inc.
 Aetna Foundation, Inc.
 Amgen Foundation
 Aon Foundation
 Automatic Data Processing
 Bank of America
 Bernstein Global Wealth Management
 The Boeing Company
 The Bullitt Foundation
 Chubb Corporation
 Cingular Wireless
 Coca-Cola Company
 Costco Wholesale
 Ernst & Young LLP
 GlaxoSmithKline Foundation
 Harris Bank
 IBM Corporation
 KeyBank of Washington
 Kraft General Foods, Inc.
 Merrill Lynch & Co. Foundation, Inc.
 Microsoft Corporation
 Puget Sound Energy, Inc.
 Quellos Group, LLC
 RealNetworks
 Russell Investment Group
 Safeco Insurance
 SAP Matching Gift Program
 St. Paul Travelers Foundation
 Starbucks Coffee Company
 Texas Instruments Foundation
 Washington Mutual Bank
 ZymoGenetics Incorporated

2006 Honorarium/Memorial Gifts

In Honor of Linda, Tom and Don Allen
 In Memory of Lorraine Ash (2)
 In Honor of Ariana Bachy
 In Honor of Brad Bartlett's birthday
 In Memory of Al Belok
 In Memory of Marjorie Benedict
 In Memory of "Bonnie"
 In Honor of Ethan Boyd
 In Memory of Rick Buckley (3)
 In Memory of Edward Arthur Bush
 In Honor of Dr. W. Colwell
 In Honor of Dick Conroy
 In Honor of Jax and Alexa Damir
 In Honor of Catherine Dickson
 In Memory of Elaine Green Eldridge (2)
 In Honor of Leslie and Mitch Elenich
 In Honor of Steve Ferrill
 In Memory of Orville Fields
 In Honor of Jimmy Miles Fletcher
 In Memory of Elmer H. Frisbie (Henry)
 In Memory of Elsea Glidden (4)
 In Honor of Harrison Grad's 10th birthday (8)
 In Memory of James Gregory
 In Honor of Madeline & Heidi Harrington
 In Memory of Sally Hepler
 In Honor of The Horne Family
 In Honor of Carol Hosford
 In Honor of Danny & Cori Ingram & Family
 In Honor of Isabella, Gabriel & Evelyn
 In Honor of Cris T. Johnson

In Memory of Devin Linnell Johnson
In Memory of Mercedes Karr
In Honor of Marj LaPorte
In Memory of Ardith J. Larson
In Honor of Connie Leonard
In Honor of Mike Leskovar and Lisa Majestic
In Honor of Bill Lewis
In Honor of Lou Lorton
In Memory of Hans Lund (2)
In Memory of Elaine Magnusson
In Memory of Gwen E. Mallet (3)
In Honor of Isadora Mallon
In Memory of Hazel Joy Woo Mar
In Memory of Isora J. McSherry
In Memory of Noah Miller (2)
In Honor of Elaine Mintz
In Memory of Raymond North
In Honor of Liam O'Brien
In Memory of Basil Parlato
In Honor of Joli Phelps (5)
In Memory of Marian Proctor (10)
In Honor of Amanda R.
In Memory of Patty Rasic
In Memory of Howard "Zeke" Robbins
In Honor of Lexie Robbins
In Honor of Audrey Roper
In Honor of Trina and Greg Samson
In Memory of John F. Scarfone
In Honor of Laurie Hawk Schmertz (2)
In Honor of Sharon Lee Shafii
In Honor of Sydney & Ella Sharrers
In Honor of Kimberly Shaw
In Memory of Catherine Stockton Shields
In Honor of Simon's 26th birthday
In Memory of Bernard Smith
In Honor of Elizabeth Smith
In Honor of Kayla, Carter & Kasey Smith
In Honor of Mary Elizabeth Smith
In Honor of Audrey Stone
In Honor of Luke Stonecipher

In Honor of Evan and Laurel Stoner's wedding
January 16th, 2006
In Memory of Ken Sullivan
In Memory of Susan Sutley (12)
In Honor of Gordon "Gordy" Swanberg (2)
In Memory of Louise S. Sweet (2)
In Honor of Daniel Taylor
In Memory of Jack Thomas
In Honor of Nora and Owen Trampe
In Honor of Jeff Walling's birthday
In Honor of Abby Walter
In Memory of Margie Wasson
In Honor of Abby Welter's birthday
In Honor of Julie and Mike Weisbach
In Memory of Gerald "Jerry" Wendt (5)
In Honor of "Snow White" - F. Tomlinson White
In Honor of Julia Wilder-Barnes
In Memory of Edie Wilder (8)
In Memory of Brian Williams
In Memory of Marie Williams
In Memory of Walt and Marie Williams (5)
In Memory of Walt Williams (44)
In Honor of Mark and Val Wilson

LionHearts Club

These generous supporters have recognized the zoo in their estate plans, ensuring that our mission of saving animals and their habitats continues far into the future.

Anonymous (15)
Ms. Anna L. (Birdie) Adams
Gwen A. Anderson
Helen E. Ashe and Beryl A. Thompson
Steve Averill
Michael Bauer
Donna Benaroya
Dominique Bideau-de Rozario

DONOR SPOTLIGHT

Debbie Killinger

The annual fund supports the zoo's daily operations... but it's far more than staplers and ballpoint pens. Just ask Debbie Killinger! Debbie's most recent gift to the annual fund brought Nayla, a new female jaguar, to the zoo and will help pay for quarantine, training, enrichment, and the costs of breeding this highly endangered animal.

Nayla came to Woodland Park at the recommendation of the American Association of Zoos & Aquariums' (AZA) Species Survival Plan program, which maintains a healthy, genetically diverse and self-sustaining population for selected species. Woodland Park Zoo was thrilled to receive the news that AZA recommended breeding Nayla with our current jaguar, Junior, although the process can be costly.

Enter Debbie Killinger. Debbie, who first came to the zoo for the annual Jungle Party auction, had attended several zoo events and tours. But it was the plight of the beautiful, highly endangered jaguar that motivated her to make her most significant contribution thus far. "I've always felt the zoo is an important part of the community," says Debbie. "I am so excited to fund this project, and I am honored to help the zoo achieve its mission."

Thank you, Debbie!

DONOR SPOTLIGHT

Marian Goddard

Marian Goddard cannot remember a time that she didn't enjoy coming to the zoo. It's become her "home away from home" as demonstrated by the thousands of hours she spends volunteering for events, tours and school visits. She especially loves the artistic thank you notes she receives from children after their zoo visit. New exhibits, new baby animals, crowd control, you name it, Marian is there. Marian's love of zoos began at a very young age. On family visits to her grandmother in Colorado Springs, an excursion to the zoo was the highlight of the trip. On several occasions, Marian "got lost" while visiting, but her family always was able to find her at the giraffe exhibit, her favorite animal. With its scenic ambiance, she says she has always found the zoo to be a very peaceful place to be. Because of her love for the zoo, Marian has included Woodland Park Zoo in her estate plans. Her planned gift will provide for our ongoing mission to save animals and their habitats, and will also leave a legacy of her giving for generations to come.

Thank you Marian, for your tireless dedication to Woodland Park Zoo.

Florence Bliss
Barbara L. Borylla
Cathy Breen
Martha H. Brooks
Val and Lucille Cedarland
Mylo and Marion Charlston
John and Patricia Clearman
Robin Cole and David Stinebaugh
Natalie C. Coleman
Michael and Charlotte Conwell
Charles Davis
Michael and Gale Davis
Peter N. Dorsette
Carolyn Enloe
Jack and Jeanne Fankhauser
Jean Feagin
Allison Feher
Nancy L. Felts
Nancy L. Funk
Peter and Betty Game
Marian Goddard
Ray Goforth Jr.
Herbert Goldman and Erika Herfindahl
Ronald and Cathy Grant
Julianna and Eric Griffin
Keith and Antje Gunnar
Carol Guthrie
Madeleine Hagen
Rodney, Deborah and Roman Hagge
Crystal Hayes
William Holt
Marion W. Hopkins
Cynthia A. Howell
Thomas Jordan and Kelly Jordan
Lilly A. Kassos
Jacqueline Kiser
Mr. and Mrs. Kurt Kleemann
Larry and Mary Knudsen
Sharon and Doug Koss
Joseph and Janice Krenmayr
Patty and Jonathan Lazarus

Bill Lewis
Frank R. Lunetti
Melinda MacKey-O'Brien and Timothy O'Brien
Judson Marquardt
James and Janice McGraw
Bill McMillan
Michael McNamara
Michael M. and Marilyn McQuaid
Ingrid and Scott Mealer
Rose Mehan
Constance Merwin
Susan Meyer
David and Dorene Miller
Allen and Helen Mull
Ken and Vicki Neiman
Larry and Rhonda Nelsen
Sandra and Phil Nudelman
John F. and Betty A. Parks
Sam Patton and Cheryl Gerber
Marla H. Peele
Linda Quirk
Barbara Sando
Diane Spaulding
Kenmour Spencer
Althea Stroum
Rosanne Stukel
Jean F. Thompson
Dave and Chris Towne
Mary Ann and Steven Urlacher
Sharon Ann Uluwehi Vaughn
Mr. & Mrs. Paul Vogt
Mike Waller and Kate Grieshaber
Elaine and Douglas Weisfield
Howard L. Wellman
Allan Wenzel
Coralyn W. Whitney

We make every effort to assure the accuracy of our list and appreciate the support of all our donors. If you find an error, please contact us at 206.615.1017. Thank you for your understanding.

2006 Volunteer Service

30 Years or More of Service

Wendie Bark
Dixie Rae

20 to 29 Years of Service

Pat Bredouw
Lynn Bryson
Robyn Chernick
Christina Horst
Gayle Hunt
Linda Keaton
Tricia Kloth
Marilyn L'Esperance
Cinda Langjahr
Ann Maher
Susan Parke
Pam Pifer
Marilynn Pray
Janet Schumacher
Reta Severtson
Clare Short
Pat Smith
Cathy Sommerfeld
Scott Stansbury
Roberta Stryker
Janis Weltzin

10 to 19 Years

Pete Anthony
Victoria Bennett
Judy Benvenuti
Linda Berkman
Marcia Binney
Regina Bowman
Cindy Boyce
Lauren Burgon
Bob Burke
Doris Cairns
Faith Campbell
Kaye Cartwright-Lissa
Connie Case
Victoria Coen
Norma Cole
Suzannah Dalzell
Tommy Dermody
Anita Dias
Johanna Dock
Bert Dudley
Laurie Ann Dudley
Carolyn Enloe
Briita Erickson
M. Eloise Etter
Sandra Ewing
Judith Foote
Betty Friedman
Isabel Gaddis
Marian Goddard
Pearl Graham
Susan Hall
Ashley Hedeem
Dale Hogle
Mary Hogue
Bill Holt
Shannon Hopkins
Mary Lou Hubbs
Becky Johnson
Ann Jones
Ted Jones
Lorita Junglov
Mary Keiter
Cheryl Kerner
Jackie Kiser

Jean Kretzler
Irene Labyak
Mary Anne Lord
Anne McCaffrey
Bonnie McDonald
Cinda McSherry
Terry Mihashi
Jean Miller*
Sandy Moss
Allen Oakley
Agnes Overbaugh
Lori Parsons
Malinda Peters
Rosemary Peterson
Ruth Peterson
Sandra Lee Prince
Robert Quimby
Linda Quirk
Carol Raitt
Diane Renstrom
Roberta Roberts
Carole Rush
Teddi Schultz
Sean Shane-Kumler
Simo Simonson
Diana Stavig
Stewart Stern
Doreen Thompson
Dinah Thoreson
Kathie Torgison
Peggy Townsend
Diane Wallock
Edie Wilder*
Lynn Williamson
Sheila Williamson
Marilyn Wittmeyer
Joan Zegree

5 to 9 Years

Cindy Abrahamson
Carol Allen
Allen Asbury
Cindy Ballestrasse
Paul Beeman
Valerie Bernard
Anne Bjornstad
Paul Bjornstad
Linda Brugalette
Bud Bryson
Carolee Clausen
Susan Colton
Cory Craig
Nancy Cushwa
Erin Dallin
Holly Delaney
Cheryl Dixon
Jim Dooley
Jeremy Eaton
Jane Eiseman
Carol Lynn Fjellberg
Jerry Fjellberg
JoAn Forsyth
Roger Friedl
Judy Gerber
Jessica Granstrom
Meladi Hagedorn
Douglas Harshfield
Susan Harshfield
Lucy Hart
Liz Healy
Heidi Heidenreich
Kim Henry
Claudia Herald

Judy Higgins
Beamar Huetter
Kathleen Ihnken
Linda Jacobs
Bill Jessberger
Nan Jessberger
Joanne Kearin
Cari Krippner
Denise LeClair
Barbara Lees
Kathryn Long
Sharon Loosmore
Kathleen Malarky
Sandy Marcus
Tracy Margel
Anna Martin
Cheryl Martin
Ellen Marx
Teresa Maylor
Robert McFerrin
Bob McQuigg
Susan Meyer
Barry Mickel
Judy Moreno
Judy Mukai
Rhonda Nelsen
Tricia Oates
Linda Oman
Heidi Pardo
Marla Peele
Jim Perry
Annie Peterman
Elaine Puderbaugh
Rachael Rogers
Dorothy Russell
Andrea Sanford
Howard Scheinholz
Betty Sinderman
Mary Ellen Soper
Maris Sovold
Karen Stewart
Ann Sundgren
JT Talbot
Sherry Teel
Sue Ann Thompson
Alice Twelker
Jean Ullom-Winston
Anne Waltz
Trish Watson
Gari Weinraub
Suzanne Weisfield
Kathy West

Up to 5 Years

Jennifer Abila
Jacob Ackerman
Nancy Adams
Riley Adamson
Nicole Adrian
Media Aguiar
Carole Alexander
Kelsey Altus
Rosanna Ambrogio
Emily Anderson
Katherine Anderson
Maria Andrus
Karli Anisoglu
Charlotte Anthony
Katie Apfel
Daniela Archer Ulin
Judie Arndt
Becky Arnold
Ryan Arold

Taylor Axworthy	Erin Dawson	Najim Hassan
Danna Baer	Heidi Decker	Rebecca Hawley
Lainy Bagwell	Jamie Delk	Kiera Hayes
Holly Bahnick	Carla DeLoach	Mathew Hayward
Michelle Bahnick	Melissa DelToro	Johanna Heald
Elizabeth Baker	Samantha DeYoung	Linda Heaney
Kate Balet	Cathy Dickson	Schyler Hect
Connie Ball	Beth DiPasquale	William Heindselman
Laura Barnes	Barbara Doherty	Sarah Henderson
Jennifer Barron	Becky Dootson	David Henkes
David Bashore	Dennis Dow	Jennifer Hensdell
Lynn Beaufreere	Carolann Driver	Suzanne Hensler
Jill Beaumont	David Droppers	Anna Hermann
Wendy Bechtel	Nora Duffy	Connor Herrington
Carmen Bellotti	Emily Duncanson	Valerie Hershey
Marissa Benham	Leslie Dunham	Jack Hight
Emily Bennett	Trisha Durdy	Megan Hillmann
Arianne Bergman	Rebecca Durkin	Barbara Hilyer
Yee Man Bergstrom	Emily Easton	Shana Hinds
Lynn Biely	Victoria Eden	Katherine Hitchcock
Thomas Bierlein	Nancy Edmondson	Joshua Holguin
Barbara Blair	Mitch Elenich	Jamie Holland
Lisa Blau-Elliott	Eileen Enstrom	Llysa Holland
Jessica Blye	Hallie Ericson	Charlie Hollingsworth
Kristine Bohner	Nina Estep	Hannah Hook
Brittany Boushey	Gillian Estrada	Tiva Hoshizaki
Cathy Breen	Eric Evans	Renee Hosogi
Amy Brewer	Peter Exner	Patti Hoy
Ric Brewer	Sandra Farley	Randi Huard
Caitlin Briant	Jennifer Farmer	Laura Hughes Parsons
Nancy Briseno	Nicholas Farnsworth	Lindsay Hull
Anna Bronson	Britta Farr	Robert Hull
Sara Brooks	Chris Federlein	Jennifer Ingle
Jon Brower	Caitlin Feeley	Joni Jabker
Jeannie Brown	Annie Feng	Myria Jacobs
Tiffany Brown	Jessica Fernen	Chelsea Jaeger
Kelly Browning	JoAnn Field	Jon-Erik Jardine
Vicky Burke	Olivia Fojt	Abigail Jarret
Joseph Burns	Britta Folden	Helen Jenne
Natasha Byrne	Joyce Ford	Rachelle Jensen
Barbara Cameron	Carolyn Forsyth	Vita Jessen
Catherine Cameron	LeAnn Fox	Amy Johannsen
Adrienne Carley	Toni Francisco	Brook Johnson
Claire Carlson-Jurich	Anna Fretheim	Bud Johnson
Kira Carmignani	Allan Friedman	Eric Johnson
Allison Carter	Nicole Froerer	Kathy Johnson
Casey Cassidy	Anne Furlong	Linda Johnson
Tim Chamberlain	Richelle Gamlam	Caroline Johnston
Ann Champagne	Gabrielle Garcia	Kristin Jones
Stephen Chapin	Yarinha Artemisa Garnica	Lindsay Jones
Kari Charbonnel	Sarah Garrison	Kaarin Keil
Brian Chittick	Molly Gasperini	Gracie Keller
Molly Chrisman	Maria dela luz Gaytan	Kyle Kellett
Carol Christiano	Molly Geiger	Erin Kemphues
Tara Christophersen	Suzanne Gerber	Janine Kennedy
Miranda Cleveland	Cheryl Gere	Tovah Kerschner
Lauren Cochenour	Gabrielle Getty	Briana Kiehl-Duval
Lily Cohen	Sarah Gilliam	Jazmine Kim
Nancy Cohen	Katie Gloor	Jeremy Kirby
Stacy Colombel	Pam Goetz	Laurie Kiss
Nathan Combs, Jr.	Nick Goodman	Adele Klee
Anne Cook	Amy Graham	Baylee Kline
Kellie Cook	Elizabeth Gray	Kathleen Klinkner
Kimberly Cooper	Marilyn Gray	Emiko Kobayashi
Madeline Cooper	Maryann Greco	Renae Koepke
Crystal Corley	Maggie Green	Anne Kohler
Amanda Cornulius	Symonty Gresham	Katie Kramer
Ida Cotter	Leah Grout	Walt Kramer
Catherine Cougan	Grace Ann Guenther	Melissa Kreachbaum
Kevin Courtney	Maria Carolina Gutierrez	Dick Kreisberg
Suzanne Crawford	Kelley Haderlie	Julie Krieger
Jewella Cree	Robert Hagedorn	Rebecca Kriesel
Marina Cresswell	Jessica Hale	Austin Kuchenbecker
Kristina Crow	Betsy Hall	Pai Pai Lam
Jen Cullimore	Pam Hampton	Jason Landwehr
Anne Curia	Elisabeth Handler	Brittany Lang
Caitlin Curry	Sana Hanif	Darrin Lange
Fred Dahl	Heather Hansen	Nic Larrivee
Becca Dahl-Lamatewama	Alice Harada	Karen Lau
Lisa Dang	Ashley Harmon	Adele Lautenslager
Peter Dang	Suzi Harrington	Emily LaVassar
Tom Darden	Samantha Harris	Mary Lawrence
Angela Darling	Emily Harrop	Clare Leach
Evan Dart	Edward Hart	Karissa Lear
Shannon Daughtrey	Grace Hartinger	Tammy Le'ger
Jasmine Davis	Martha Hart-Vidoni	Kasey LeMay

Laurie LeMay
Ginny Lemmex
Diane Lepppek
Audrey Lieberworth
Andrea Lindsay
Henry Lingat
Merrilyn Lingren
Andrew Litzky
Crystal Lloyd
Janet Loftis
Karla Logue
Robert Lopez
Heidi Love
Hannah Lucas
Jessica Luchsinger
Rachel Luchsinger
Bevin Lucker
Keely Lucker
Vicki Luckman
Zachary Luke
Scott MacCarter
Valerie Madison
Mary Madore-Girouard
Roberta Maguire
Rebecca Mallos
Caressa Lee Maltos
Gary Marshall
Matthew Martin
Melissa Martin
Valerie Martin
Chris Marx
Steve Marx
Robert Mauri
Taylor May
April McClaughry
Kevin McCollum-Blair
Logan McCuiston
Justin McDermott
Hilary McGowan
Courtney McKiernan
Hayley McLucas
Aimee McMillan
Michael McQuaid
Chana Meddin
Linda Meehan
Heather Merritt
Scarlett Messenger
Aliana Messenger
Spenser Mestel
Sara Metcalfe
Lynn Meyer
Klaus Meyn
Heather Michael Diemert
Patty Michaud
Morgan Michel-Schottman
Gabi Miller
Penny Miller
Lisa Miramontez
Judyth Mirante
Britta Molter
Chloe Moore
Cooper Moore
Lynn Moore
Colleen Morgan
Maureen Morris
George Murphy
Jennifer Murphy
Jessica Murphy
Shannon Murphy
Cameron Murray
Corey Murray
Karen Murray
Mary Murray
Annie Marie Musselman - Uhlir
Rafat Naqvi
Ron Naselow
Margy Nason
Elizabeth Sophie Nelson
Kirsten Nelson
Su Nelson
Andrew Nicholson
Ian Nicholson
Nelly Nicklason
Julia Nixon
Greg Noel
Bridget Nowlin

Nancy Nygard
Judy Nyman-Schaaf
Emily Oakland
Carrie O'Brien
Jordan O'Brien
Misa Odagiri
Dianne O'Hagen
Patricia O'Hanley
Jennifer Ohmer
Stacy Olfert
Felicity Oram
Janet Ortega
Nancy Ostrander
Alie Palmer
Celine Pardo
Gregory Parker
Linda Parks
Lauren Parrish
Timothy Partee
Florence Patten
Elizabeth Pedersen
Samantha Pedersen
Talis Pennell
Vivian Perdue
Herb Perez
Cynthia Perkins
Jenny Lynn Peterson
Jonathan Pew
Ursula Pfeffer
Russell Pharr
Lindsay Phillips
Liz Phillips
Melissa Pierson
Dareyl Plummer
Andrew Poole
Louie Poore
Margaret Porro
Jacob Power
Denise Price
Jaclyn Price
Luke Primous
Jean Primozych
Bethany Pringle
Patrick Purcell
Mike Queisser
Aimee Quiggle
Mackenzie Quinn
Sue Raczkowski
Stephanie Raddatz
Mona Radheshwar
Sara Rahmani
Thea Railey
Angela Rao
Elyse Rector
Marcia Reed
Nathan Reed
Jo Reeves
Alex Rehberg
Miriam Reiss
Lindsey Reno
Alexis Ressler
Kathe Reubendale-Corwin
Juliet Richards
Connor Richardson
Caleb Richmond
Leslie Ritter
Jamie Roark
Judy Robnett
Loni-Jean Rodrigo
Polly Rogers
Rachel Rogers
Tye Rogerson
Christina Rojas
Franklyn Rojas
Audi Roper
Rick Royer
Shirley Ruble
Ruth Sabol
Kayla Sandall
Lucia Saquic-Ray
Corena Scafe
Jean Scheideman
Tracey Schmidt
Karie Schneider
Nicholas Schram
Jacob Schwartz

Adam Seal
Liz Seely
Hunter Senesac
Winston Severts
Anu Shanbhag
Ellie Shane
Amy Sharp
Kelly Sharples
Mia Shearer
Marilyn Sherris
Devon Sherrow-Graves
Christina Sherry
Carol Shrack
Pacheena Shuen-Mitchell
Stephanie Sizemore
Hanna Skattum
Allison Smith
Christina Smith
David Smith
Marcia Smith
Pat Smith
Regina Smith
Amy Smothers
Eric Sorlien
Alycia Spada
Ryan Spahr
Emily Spakowsky
Ed Spangenberg
Stephanie Spar
Michelle Spencer
Tammy Steciw
Jessica Stewart
JR Stewart
Nancy Still
Kristine Stipp
Rachael Stoeve
Kristin Stolarski
Alexander Strandoo
Alaina Strehlow
Rebecca Streng
Sharon Strobe
Susan Strom
Heidi Stuchlik
Dana Svenson
Tori Swanson
Sally Sylliaasen
Audrey Tang
Jim Templeman
Kari Thomas
Susan Thomas
Sarah Thon
Suzanne Thurman
Kathi Tidd
Linda Tjhin
Sarah Tomas
Patti Tooke
Myrna Torrie
Mary Ann Tracy
David Traylor
Elena Trebaol
Robin Turblom
Don Tuttle
Hayley Umayam
Dale Unruh
Linda Uyeda
Shelly Van der Merwe
Deborah VanDeventer
Chris VanHeyningen
Bryan Vasquez
Kim Vederoff
Fredrik Venold
Melissa Verdeck
Katie Vincent
Krystal Wade
Courtney Wagner-Robinson
Nicole Waliszewski
Jennifer Walker
Caroline Wallace
Britta Wallstrom
Stephanie Walsh
Raining Wang
Alicia Ward
Matt Warren
Up to 5 Years continued
Julie Webster
Tara Wedlund

Emily Wegeleben
Matt Weintraub
Gretchen Wetzel
Alexandra Whalen
Connor White
Leslie Whitecrow
Linda Whitworth
Sarah Wiesner
Bob Williamson
Josh Winship
Jillian Winston
Ana Margarita Woc Colburn
Henry Wolf
Aaron Wong
Alice Woo
George Wood
Julianna Wood
Kelsey Wood

Teresa Woon
Ashley Wraspir
Sarah Wulff
Megan Wyreweden
Roger Yaffee
Kevin Yattaw
Greta Yocom
Jacqueline Young
Lauren Young
Stephanie Young
Raechel Youngberg
Stephanie Zaballero
Shawn Zella
Ryan Zemke
Ron Zuckerman

**Deceased*

Community Volunteer Service Groups

Bank of America
HomeStreet Bank
Master Gardeners
Meridian School
National Charity League
Nooksack High School
Safeco Insurance
St. Joseph School
Sound Community Bank
Starbucks
Washington Mutual
WPZ Wildkeepers

757 individuals and 12 community groups
of more than 800 people donated over
72,000 hours to the zoo in 2006.

Woodland Park Zoo, established in 1899, is a cherished resource for our community, valued for its innovative exhibits, horticultural excellence, educational expertise and leadership in wildlife conservation. Featuring more than **1,000 animals** representing nearly **300 species** on 92 lushly planted acres, the zoo has been honored with six national exhibit awards by the Association of Zoos & Aquariums. These include:

Jaguar Cove, 2005

Trail of Vines, 1997

Northern Trail, 1995

Tropical Rain Forest, 1993

Elephant Forest, 1990

African Savanna, 1981

We sincerely thank you for your generosity and support. For more information about our mission, programs and conservation work, please contact us at 206.684.4880 or webkeeper@zoo.org.



2006 Operations Review

2006 was a busy year for the zoo. We stretched our capabilities by opening two major attractions — Zoomazium and our historic carousel — yet retained our quality animal care and guest services while continuing to grow our reputation as a leader in education and conservation. We also were able to balance our budget and improved our financial reserve by the end of the year.

Last May, we introduced Zoomazium, our full-body nature play space for kids, to thousands of appreciative families. This facility was built expressly to address “nature deficit disorder” in children — a lack of opportunities for them to play, learn and connect directly to nature. Since opening, Zoomazium has hosted over 300,000 guests. Nature Exchange, Zoomazium’s program for young “naturalists” to interact with zoo educators and do their own field collecting, boasted well over 5,000 traders by year’s end. Zoomazium also proved to be a great place for the environment as well, as it earned a prestigious LEED (Leadership in Energy and Efficiency Design) Gold certification from the U.S. Green Building Council — the first zoo project in the United States to do so.

In July, we opened the historic carousel pavilion to much fanfare. After operating the carousel to the joy of children and adults through September, it closed for construction to complete the glass enclosure and other pavilion features that will be a reality in spring 2007. By the end of 2006, our last carousel horse was adopted by a generous donor, ensuring the success of our fundraising campaign to finish the pavilion.

Supported by great weather and new features, Woodland Park Zoo posted amazing attendance records. A new record for single-day attendance occurred at Macy’s Mom & Me at the Zoo with over 14,300 people. June through July were the zoo’s best attendance months in a decade, while July attendance, along with attendance for the entire third quarter, were the highest in zoo history.

We continued to see our animal collection change and grow. In December, we welcomed the addition of a Sumatran tiger cub — a birth that demonstrated our capability as one of the few facilities to successfully breed this endangered cat. We also were pleased to release another 34 western pond turtles into the wild after head starting them at the zoo, bringing the wild population to more than 1,000 — just two examples of a number of zoo conservation programs that save animals and their habitats here and around the world.

In 2006, we also welcomed a new female jaguar to the zoo in hopes of forming a successful breeding pair with our male, Junior. The first wave of new animals that will inhabit the zoo’s African Savanna exhibit in the summer of 2007 also began to arrive.

We gratefully thank all of our supporters, including individuals across our community and elected officials, who make Woodland Park Zoo one of the most admired facilities of its kind in the country.



Bruce Bohmke, Deputy Director



Unaudited Balance Sheet*

ASSETS

General Assets

Cash and Equivalents	\$ 1,056,371
Endowment Investments	4,136,810
Accounts Receivable (Net)	11,331,285
Inventory	396,186
Artwork	292,626
Prepaid Expenses	109,283
Antique Carousel, Net of Depreciation	910,425
Other Assets	240,649

Total General Assets **\$ 18,473,635**

Fixed Assets

Building & Leasehold Improvements	\$ 346,864
Equipment	2,065,208
Less Accumulated Depreciation	(1,869,394)

Total Fixed Assets **\$ 542,678**

Total Assets **\$ 19,016,313**

LIABILITIES AND NET ASSETS

Liabilities

Accounts Payable	\$ 758,830
Employee Benefits Payable	989,451
Other Accrued Liabilities	888,939
Project Loans Payable	1,874,891
Deferred Revenue	158,791

Total Liabilities **\$ 4,670,902**

Net Assets

Unrestricted	\$ 1,887,479
Temporarily Donor-Restricted: Operating	3,033,125
Temporarily Donor-Restricted: Non-Operating	5,726,873
Permanently Donor-Restricted	3,697,934

Total Net Assets **\$ 14,345,411**

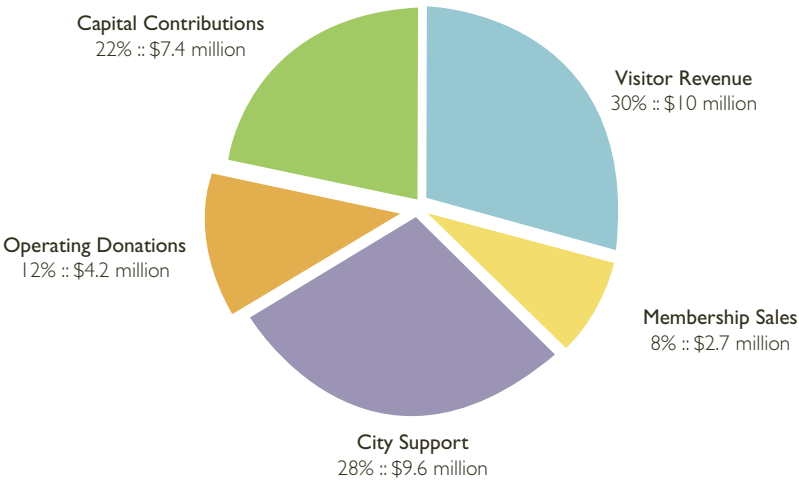
Total Liabilities and Net Assets **\$ 19,016,313**

As of December 31, 2006



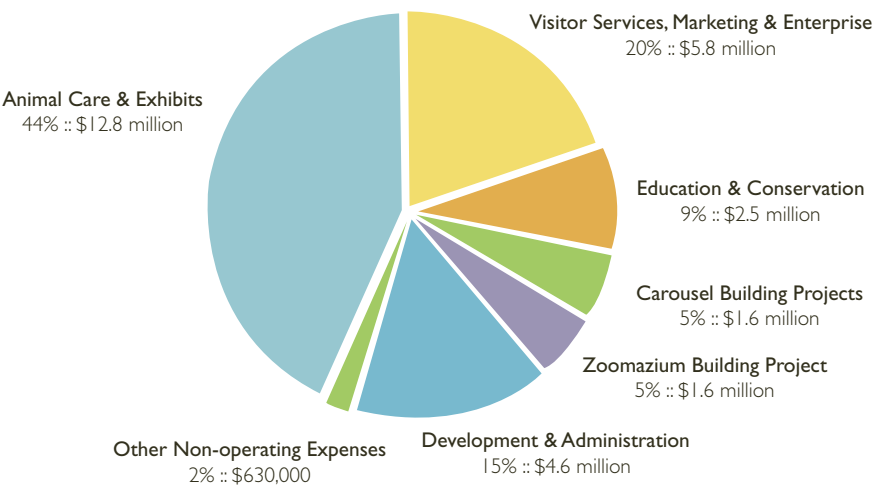
2006 TOTAL OPERATING AND CAPITAL REVENUE*

Total \$34 Million



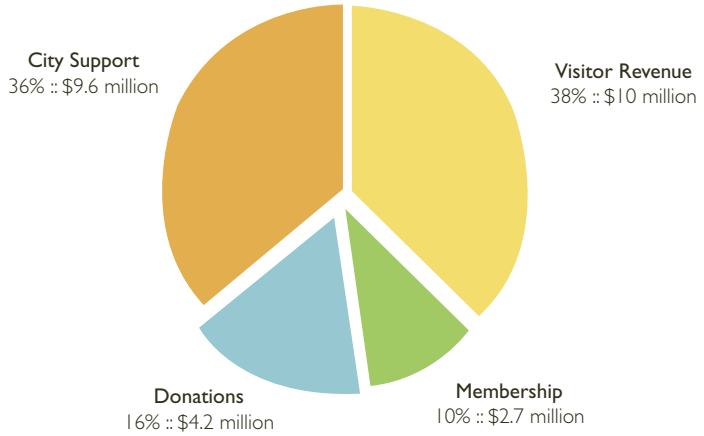
2006 TOTAL OPERATING AND CAPITAL EXPENSES*

Total \$29.5 Million



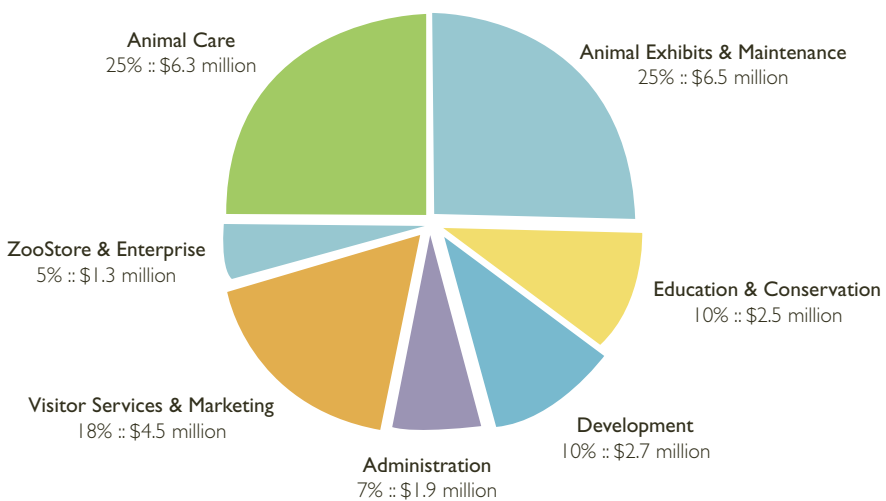
2006 OPERATING REVENUE*

Total \$26.5 Million



2006 OPERATING EXPENSES*

Total \$25.7 Million



*Unaudited



You can make a difference!

How you can help endangered species — every day!

As an individual, you can help turn the tide away from extinction by practicing some of these simple suggestions:

1

Live conservation! Don't make conservation an effort, make it a way of life. Start making a list of things you should do daily and then add them into your routine one at a time until they are a part of your daily life.

2

Buy shade-grown coffee and help reduce the need to clear-cut rain forests where much of the world's coffee is grown. Visit www.shadegrown.org for more information.

3

Consider “corn plastics” for your picnics. A number of new disposable eating utensils and food container products using corn, sugar cane, and other natural starches are on the market that are biodegradable/compostable and do not contain petroleum.

4

Purchase FSC-certified wood products when building and remodeling. The Forest Stewardship Council, or FSC, is an international, non-profit organization that identifies wood and wood products, including lumber, furniture and paper that are derived from well-managed forests certified. Find suppliers by visiting www.certifiedwood.org.

5

Increase your backyard's biodiversity by planting a variety of native vegetation to attract diverse urban wildlife.

6

Know your seafood. Many types of seafood are seriously depleted due to overfishing. Monterey Bay Aquarium has developed a Seafood Watch List (www.mbayaq.org/cr/seafoodwatch.asp) that lists those types of seafood that are fished sustainably or are in abundance.

7

When grocery shopping, take your own canvas bag or backpack. Also, reuse and recycle old plastic and paper grocery bags.

8

Learn about issues affecting endangered species. Visit Association of Zoos & Aquariums-accredited institutions. Join and become an active member. Membership at Woodland Park Zoo, for example, helps support dozens of conservation projects around the world.

9

Contact your elected representatives and express your views about conservation of endangered species and wild habitats.

10

Reuse what you can and always recycle. Use biodegradable products. Compost when possible. Turn off lights and water. Buy items used whenever possible. Think of ways to be energy and water efficient. We're all in it together!



Woodland Park Zoo Board of Directors



Acknowledgments

Photography

Cover.....	Mat Hayward	N.....	Ryan Hawk
Inside front cover.....	Ryan Hawk	O.....	Ryan Hawk
A.....	Dale Unruh	P.....	Ryan Hawk
B.....	Dale Unruh	Q.....	Ryan Hawk
C.....	Ryan Hawk	R.....	Mat Hayward
D.....	Ryan Hawk	S.....	Dale Unruh
E.....	Mat Hayward	T.....	Ryan Hawk
F.....	J.A. McGraw/mcgrawmedia.com	U.....	Ryan Hawk
G.....	Mat Hayward	V.....	Mat Hayward
H.....	Mat Hayward	W.....	Mat Hayward
I.....	Bill Hogue/Snow Leopard Trust	X.....	Ryan Hawk
J.....	Ryan Hawk	Y.....	Ryan Hawk
K.....	Dennis Dow	Z.....	Ryan Hawk
L.....	Mat Hayward	Tiger cub.....	Ryan Hawk
M.....	Ryan Hawk	Inside back cover.....	Ryan Hawk



Woodland Park Zoo is an accredited institution of the Association of Zoos & Aquariums.





www.zoo.org

Sometimes, a simple act or change of behavior can create a ripple that has a dramatic effect on the world. Although the initial act may seem small or insignificant, taking steps to help wildlife is in all our hands.

Here at Woodland Park Zoo we realize the impact our “footprint” has on the world and we continually make strides to lessen our consumption. To that end, we have installed waterless bathroom fixtures and begun using new, energy efficient and less polluting grounds maintenance equipment. We’ve instituted new procedures that reduce paper, water and electricity use. We recycle paper, metal, glass and asphalt and use recycled content in everything from our print materials (including this report!) to our copy paper. And of course we return back to the earth everything possible, from food scraps from our lunches and food services to the natural waste created by our herbivores into Zoo Doo.


We encourage you to discover ways that you, too, can make positive changes in your lifestyle to help wildlife.

A special thank you to donor



Great neighbors. Great bankers.

for underwriting a portion of our 2006 Annual Report.

 *printed on recycled paper*

